

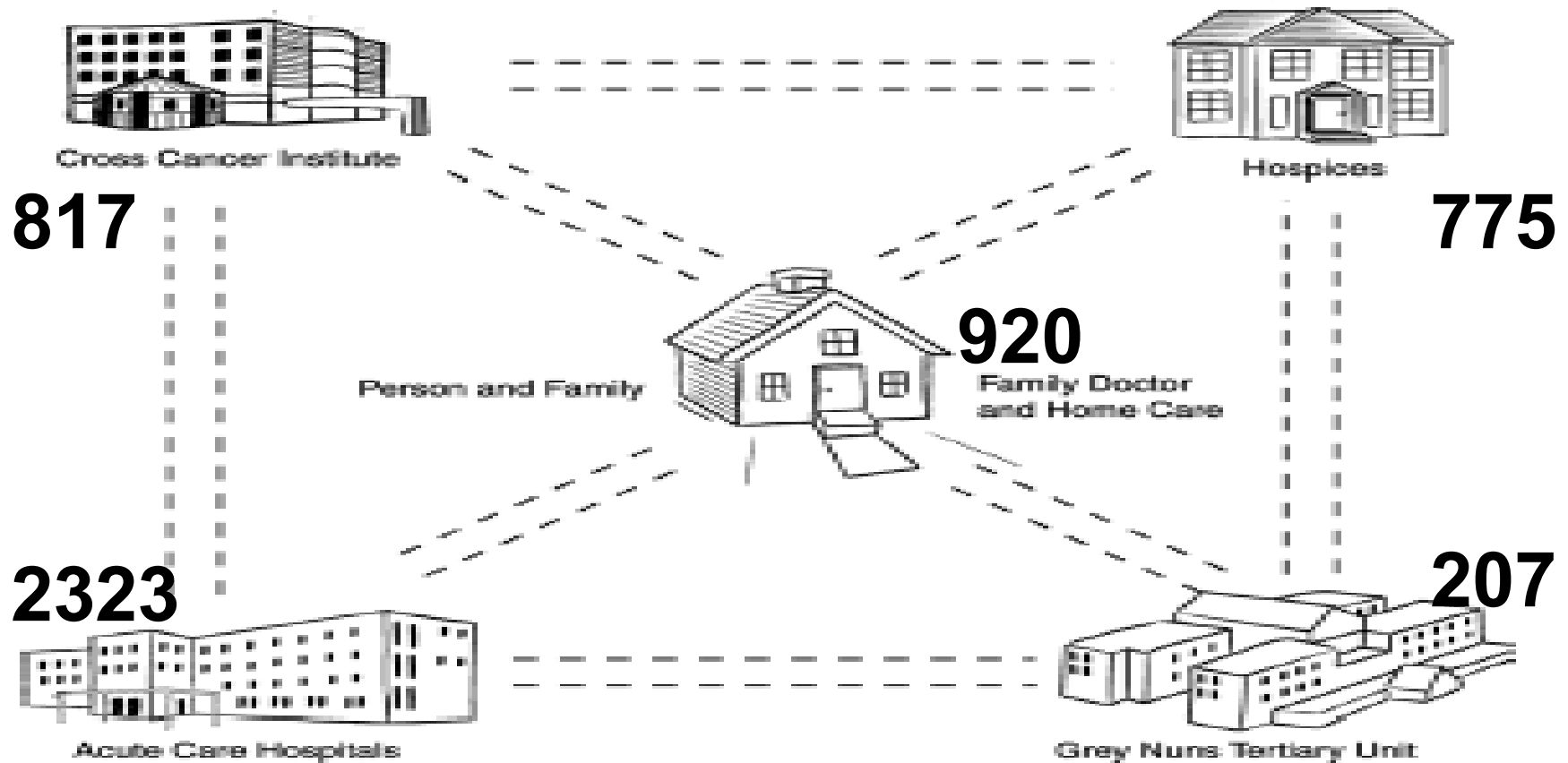
EZPCP Cross Site Report 2014/2015

**How are we doing and where should
we be going?**

External value of our Annual reports – referenced in 2015

- Ontario provincial auditor's report
- CMA Palliative care report – national call to action – also highlights the EZPCP
- Canadian Cancer Society – palliative care for all Canadians

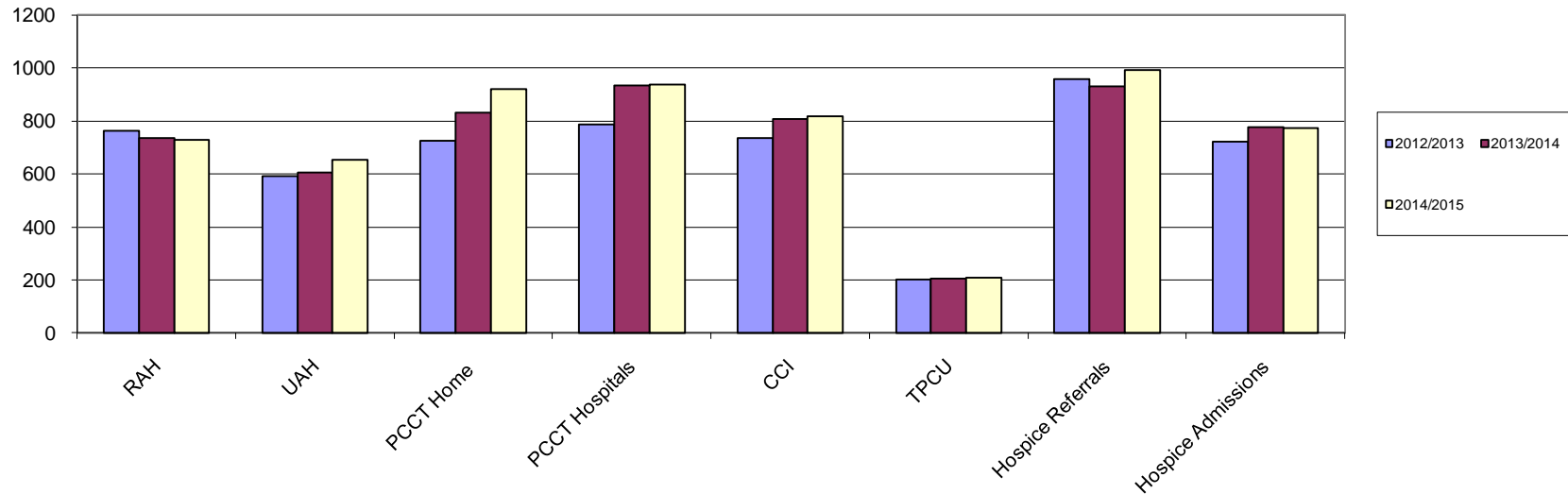
Comprehensive Integrated Clinical PC Service



2012/2015 EZPCP Services : Consults/Discharges

	RAH	UAH	PCCT		CCI	TPCU	Hospices	
	RAH	UAH	PCCT Home	PCCT Hospitals	CCI	TPCU	Hospice Referrals	Hospice Admissions
2012/2013	764	591	725	787	734	201	959	723
2013/2014	737	604	831	935	806	206	932	777
2014/2015	729	655	920	939	817	207	993	775

2012/2015 Palliative Care Consults/ Discharges



2012/2015 PCCT Hospitals

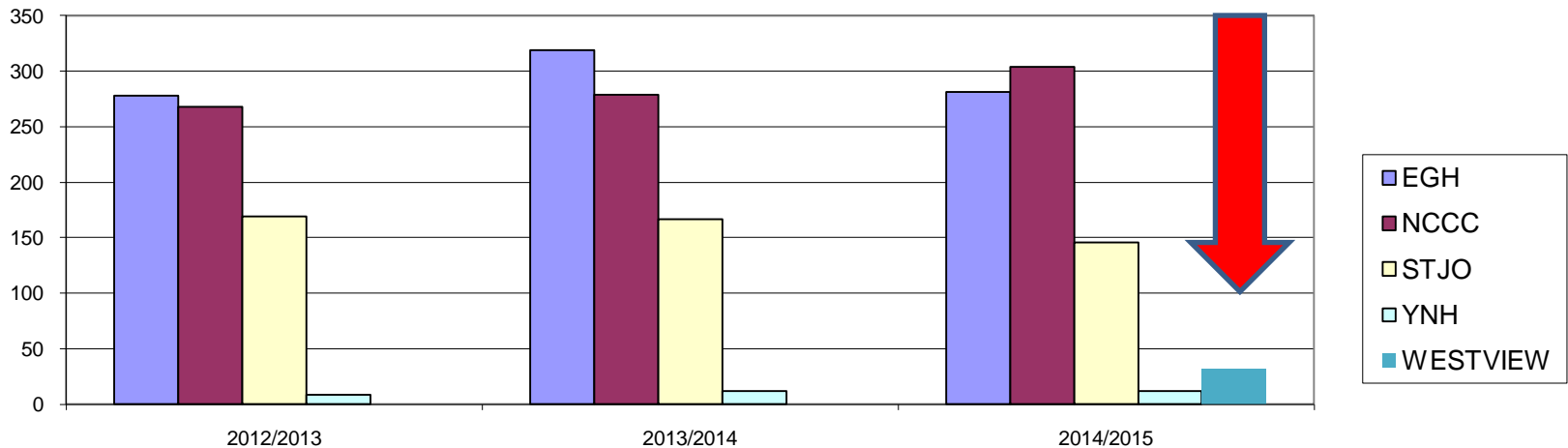
REFERRAL HOSPITALS	2012/2013	2013/2014	2014/2015
GREY NUNS HOSPITAL	281	324	295
MISERICORDIA HOSPITAL	199	216	209
STURGEON HOSPITAL	166	164	181
OTHER HOSPITALS	141	231	254
TOTAL	787	935	939

EZPCP data as of May 04, 2015

2012/2015 Hospice Admissions

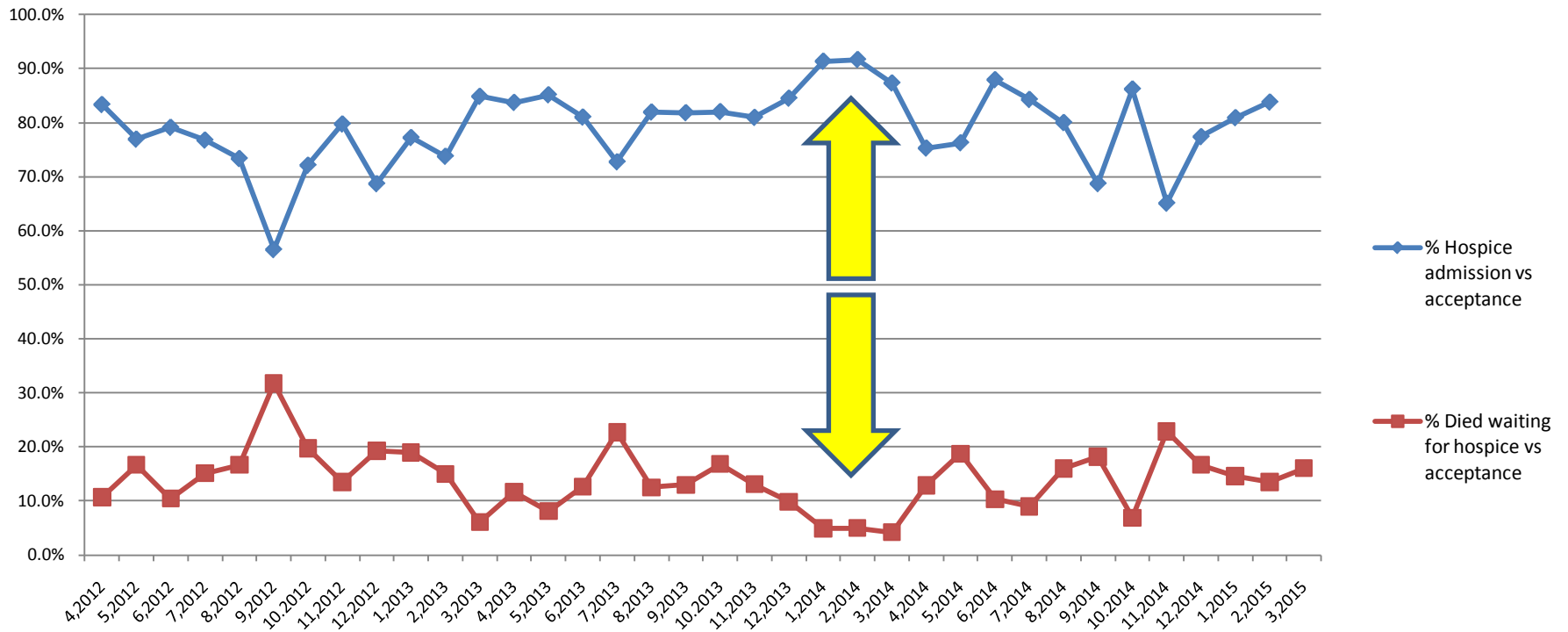
	2012/2013	2013/2014	2014/2015
EGH	278	319	281
NCCC	268	279	304
STJO	169	167	146
YNH	8	12	12
WESTVIEW	0	0	32
TOTAL	723	777	775

2014/2015 Hospice Admissions



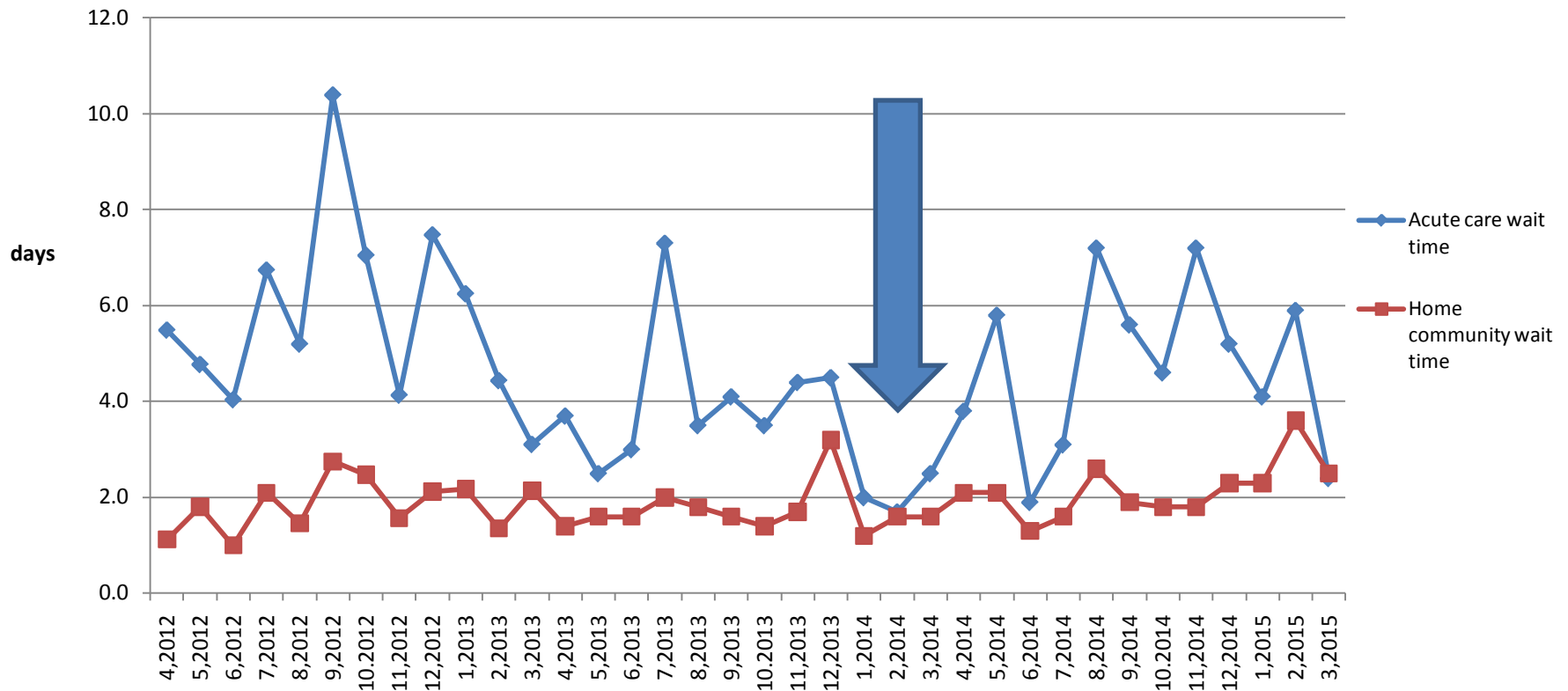
2012/2015 Hospice Acceptance & Outcomes

% Hospice Admissions & % Died Waiting 2012/2015



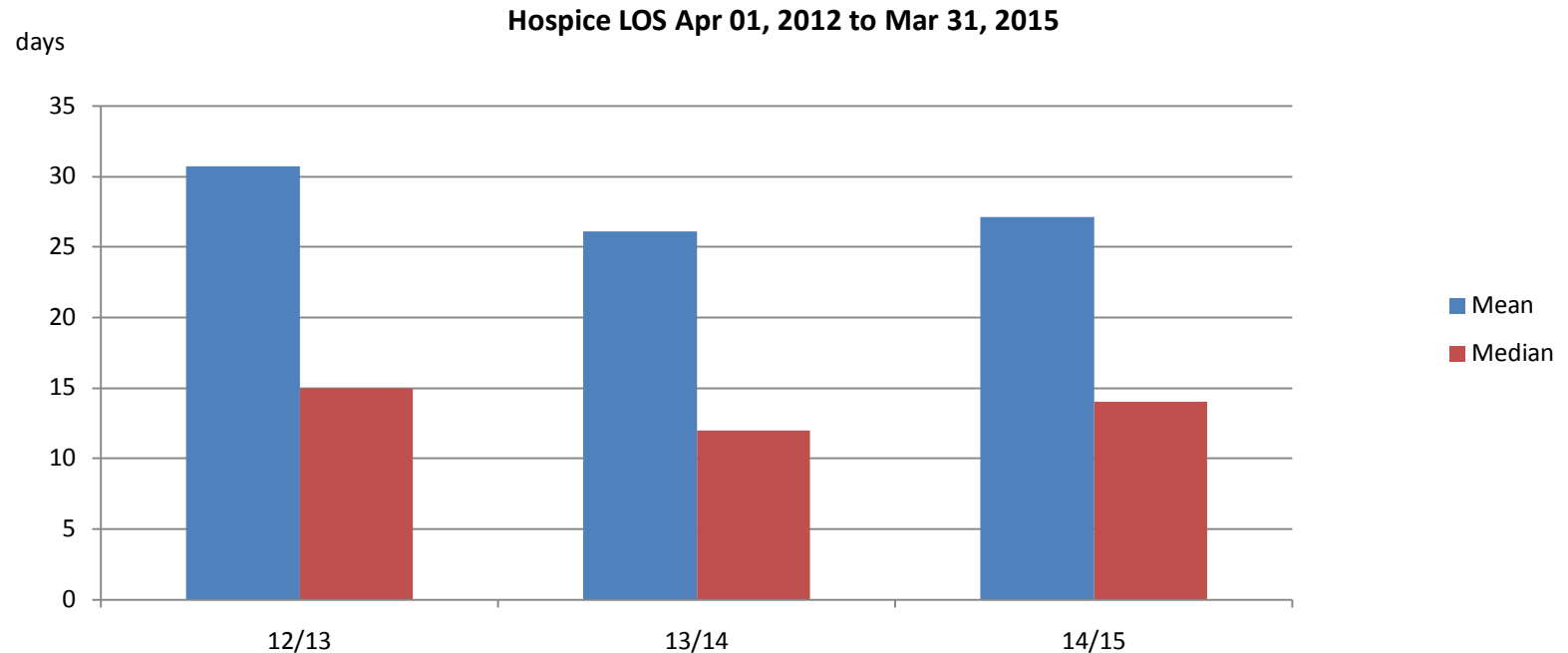
2012/2015 Hospice Average Waiting Time

Hospice Average Waiting Time for Acute Care and Home Community 2012/2015



2012/2015 Hospice LOS (days)

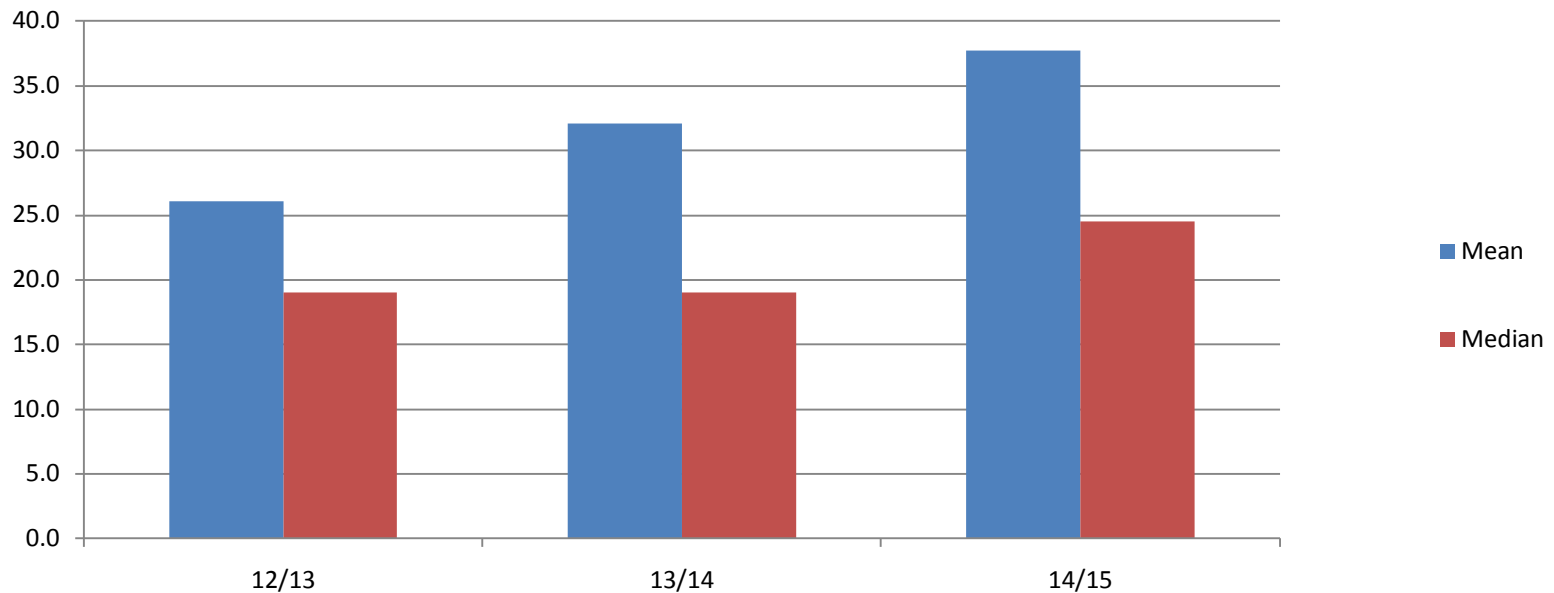
	12/13	13/14	14/15
Mean	30.7	26.1	27.1
Median	15	12	14



2012/2015 TPCU LOS (days)

	12/13	13/14	14/15
Mean	26.1	32.1	37.7
Median	19.0	19.0	24.5

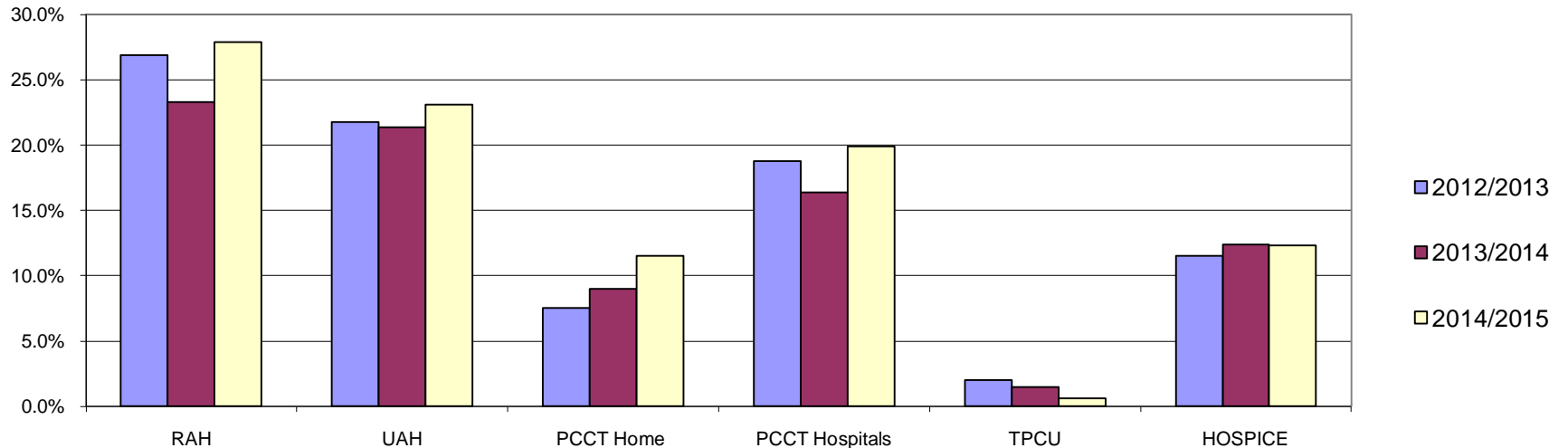
TPCU LOS Apr 01, 2012 to Mar 31, 2015



2012/2015 Non Cancer Diagnosis

	RAH	UAH	PCCT Home	PCCT Hospitals	TPCU	HOSPICE
2012/2013	26.9%	21.8%	7.5%	18.8%	2.0%	11.5%
2013/2014	23.3%	20.8%	9.0%	16.4%	1.5%	12.4%
2014/2015	24.1%	24.0%	11.5%	19.9%	0.6%	11.9%

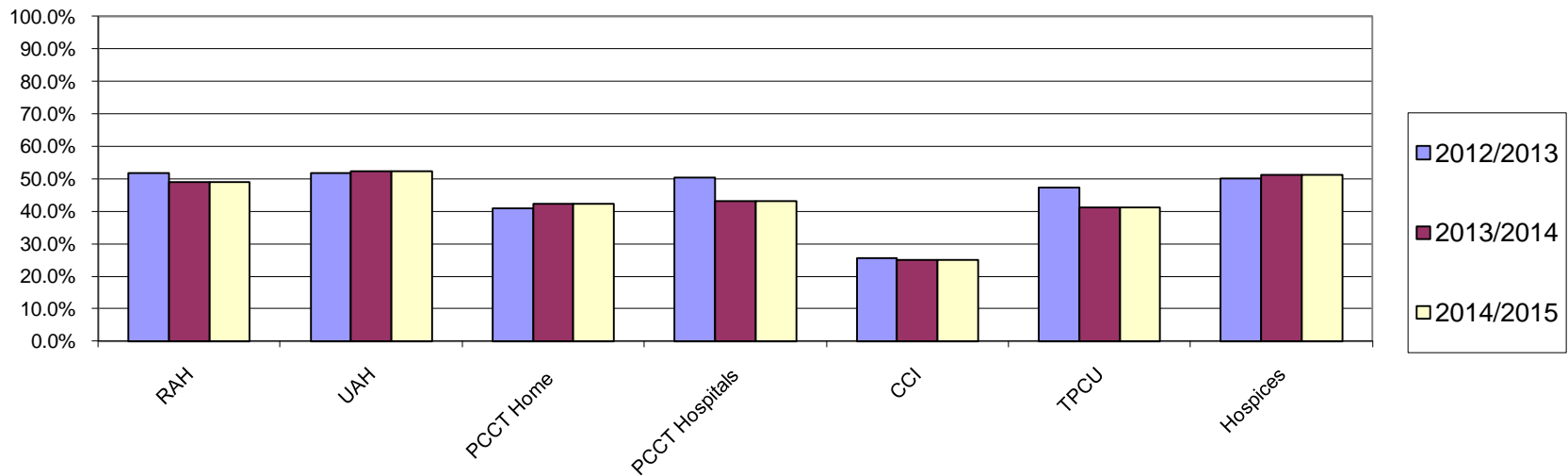
2012/2015 Non Cancer Diagnosis



Abnormal cognition – Initial MMSE LESS Than Expected MMSE

	RAH	UAH	PCCT Home	PCCT Hospitals	CCI	TPCU	Hospices
2012/2013	51.80%	50.60%	40.80%	50.50%	25.60%	47.30%	50.00%
2013/2014	49.1%	52.3%	42.4%	43.1%	25.1%	41.3%	51.3%
2014/2015	58.9%	49.8%	46.1%	50.0%	25.0%	37.4%	52.9%

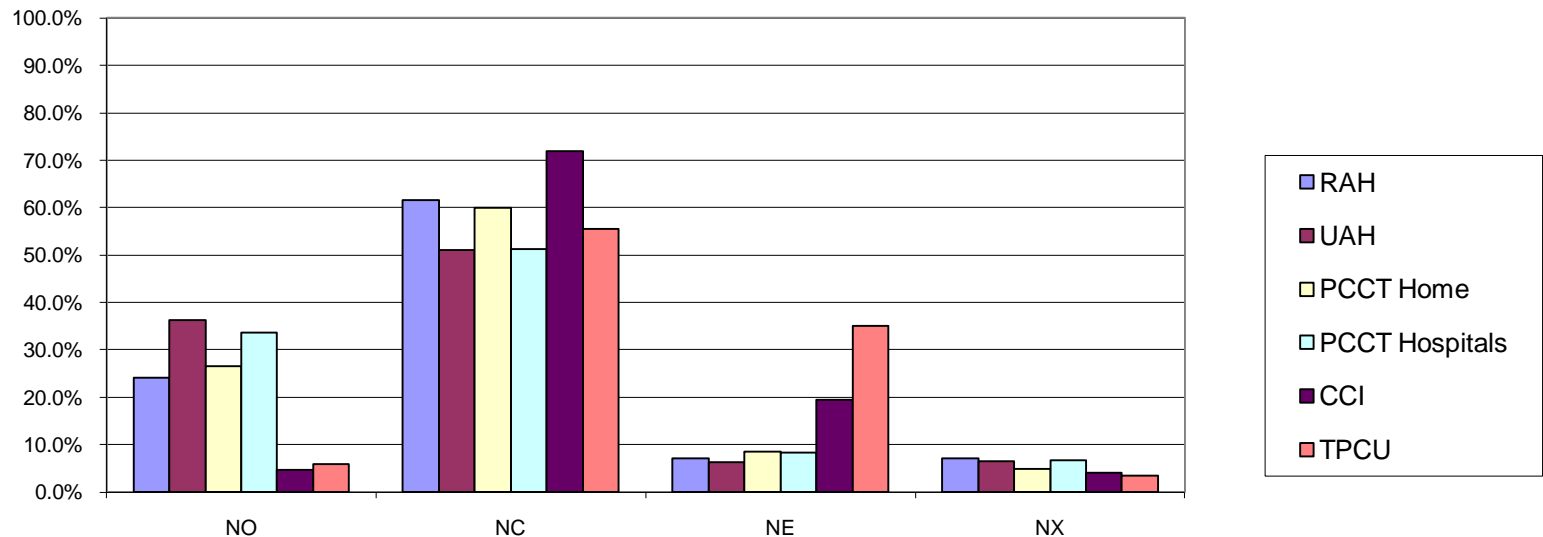
2014/2015 Initial MMSE < Expected MMSE



Edmonton Classification System for Cancer Pain_Mechanism Pain

2014/2015	NO	NC	NE	NX
RAH	24.2%	61.7%	7.2%	7.0%
UAH	36.2%	51.0%	6.3%	6.5%
PCCT Home	26.5%	60.0%	8.6%	4.9%
PCCT Hospitals	33.7%	51.2%	8.3%	6.8%
CCI	4.7%	72.0%	19.4%	4.0%
TPCU	5.8%	55.6%	35.1%	3.5%

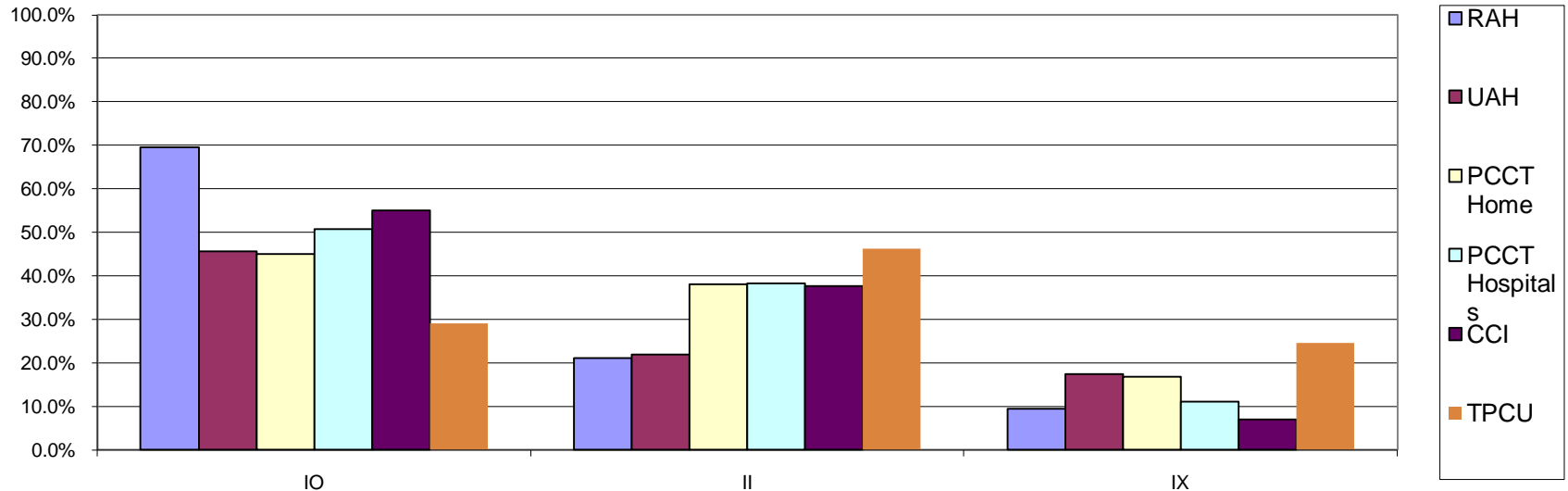
2014/2015 Mechanism Pain



Edmonton Classification System for Cancer Pain_Incident Pain

2014/2015	IO	II	IX
RAH	69.5%	21.1%	9.4%
UAH	60.5%	22.0%	17.4%
PCCT Home	50.7%	38.3%	11.1%
PCCT Hospitals	45.1%	38.0%	16.9%
CCI	55.1%	37.7%	7.1%
TPCU	29.1%	46.2%	24.7%

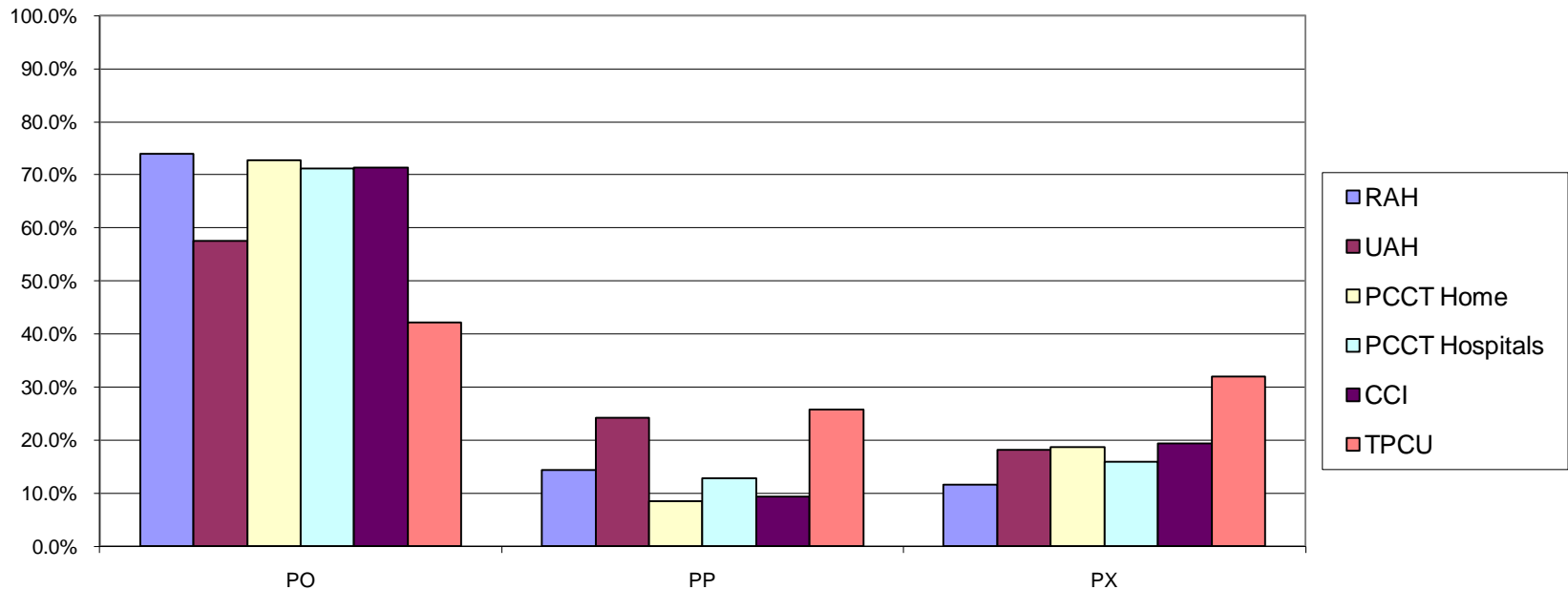
2014/2015 Incident Pain



Edmonton Classification System for Cancer Pain_Psychological Distress

2014/2015	PO	PP	PX
RAH	74.0%	14.3%	11.7%
UAH	57.6%	24.2%	18.2%
PCCT Home	71.2%	12.9%	16.0%
PCCT Hospitals	72.8%	8.5%	18.7%
CCI	71.3%	9.3%	19.4%
TPCU	42.1%	25.8%	32.1%

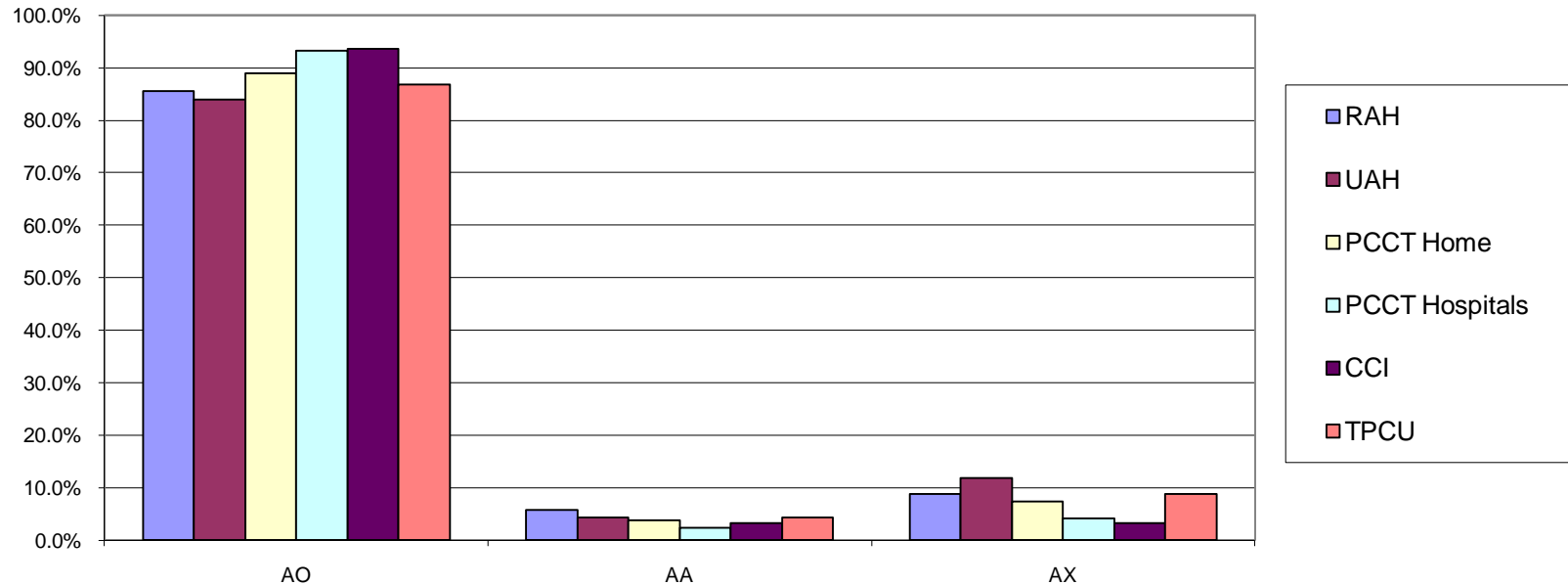
2014/2015 Psychological Distress



Edmonton Classification System for Cancer Pain_Addictive Behavior

2014/2015	AO	AA	AX
RAH	85.5%	5.8%	8.7%
UAH	83.9%	4.3%	11.8%
PCCT Home	88.9%	3.8%	7.3%
PCCT Hospitals	93.3%	2.4%	4.2%
CCI	93.6%	3.2%	3.2%
TPCU	86.8%	4.4%	8.8%

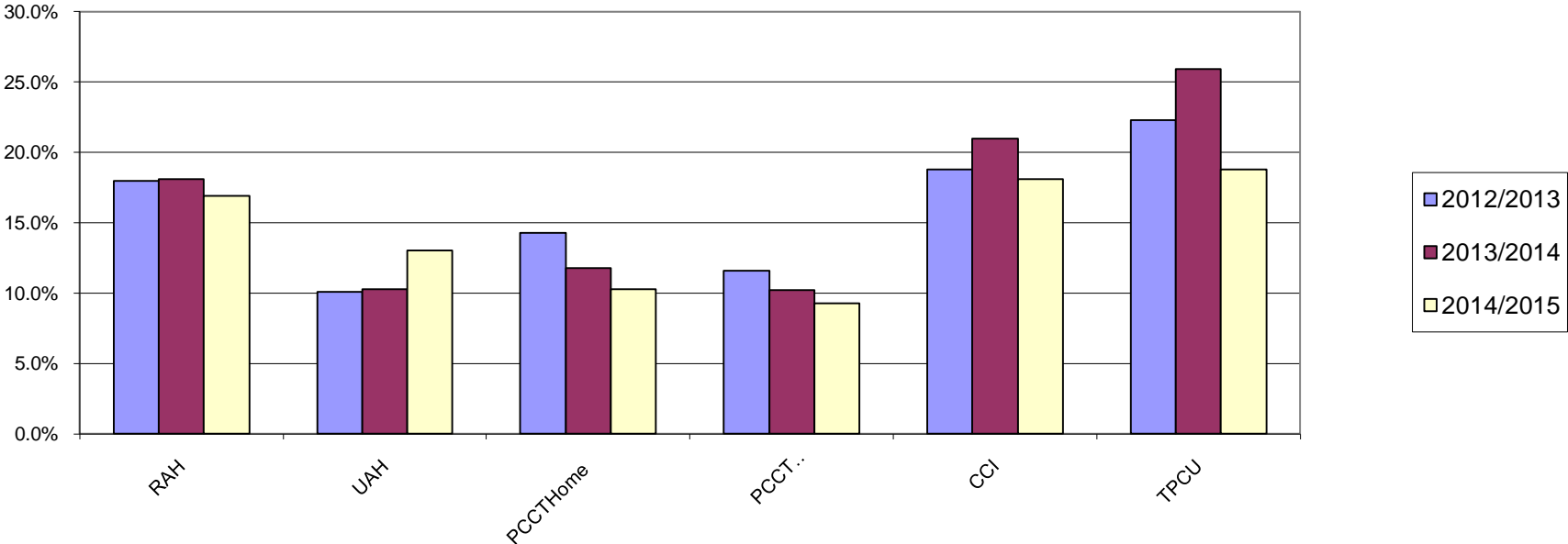
2014/2015 Addictive Behaviour



CAGE 2 to 4

	RAH	UAH	PCCT Home	PCCT Hospitals	CCI	TPCU
2012/2013	18.0%	10.1%	14.3%	11.6%	18.8%	22.3%
2013/2014	18.1%	10.3%	11.8%	10.2%	21.0%	25.9%
2014/2015	16.9%	13.0%	10.3%	9.3%	18.1%	18.8%

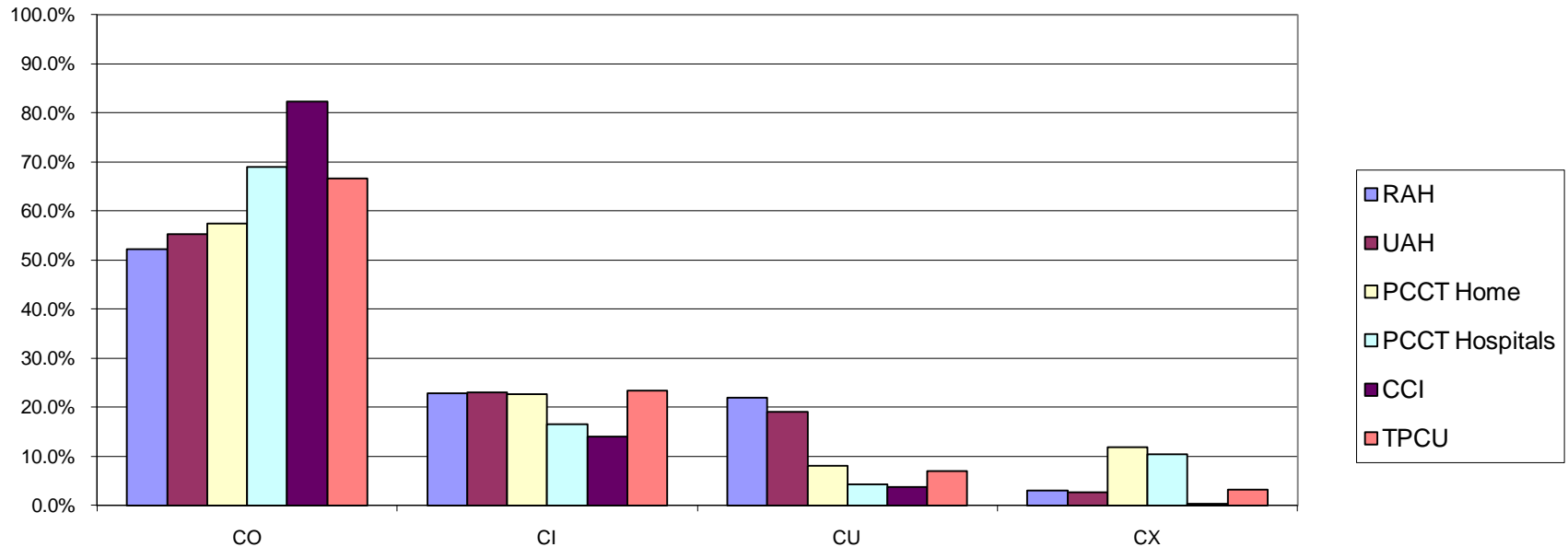
2012/2015 CAGE 2 to 4



Edmonton Classification System for Cancer Pain_Cognitive Function

2014/2015	CO	CI	CU	CX
RAH	52.2%	22.9%	21.9%	3.0%
UAH	55.3%	23.0%	19.1%	2.6%
PCCT Home	68.9%	16.6%	4.3%	10.3%
PCCT Hospitals	57.5%	22.6%	8.1%	11.9%
CCI	82.2%	13.9%	3.7%	0.2%
TPCU	66.7%	23.3%	6.9%	3.1%

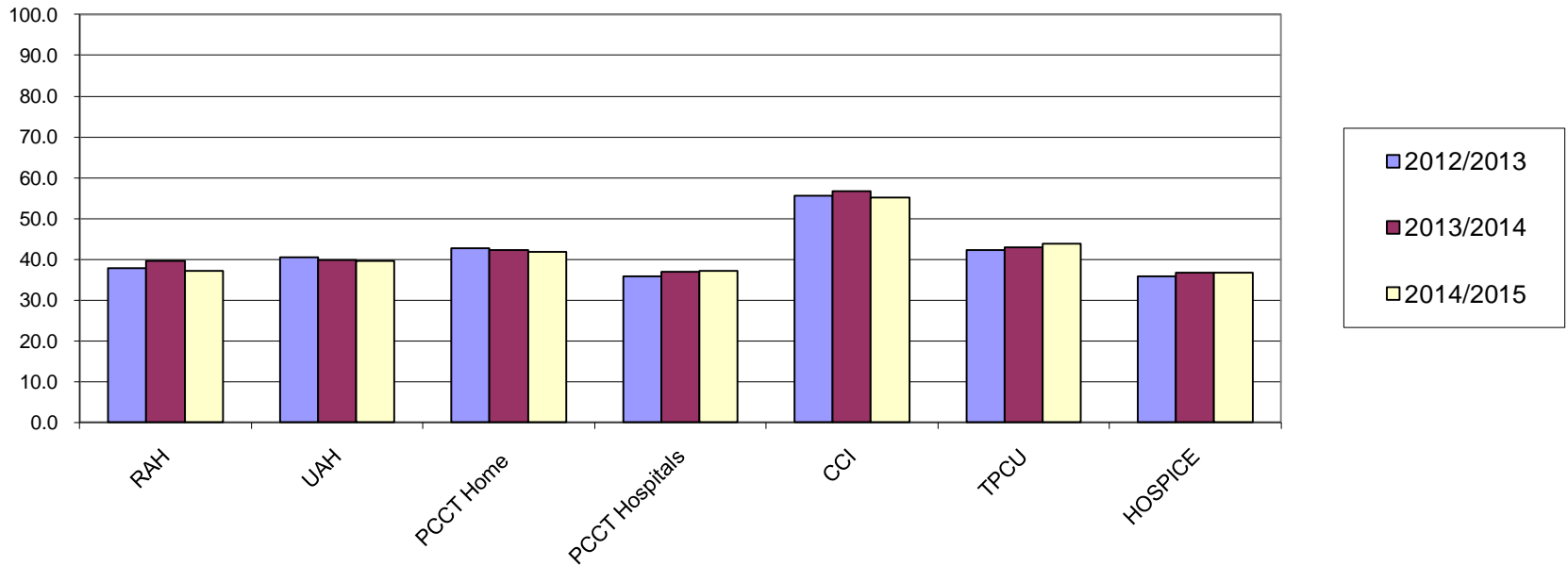
2014/2015 Cognitive Function



Initial Average PPS

	RAH	UAH	PCCT Home	PCCT Hospitals	CCI	TPCU	HOSPICE
2012/2013	37.9	40.4	42.7	35.9	55.6	42.3	35.7
2013/20134	39.6	39.9	42.2	37.0	56.6	42.9	36.6
2014/2015	37.1	39.6	41.8	37.1	55.2	43.9	36.7

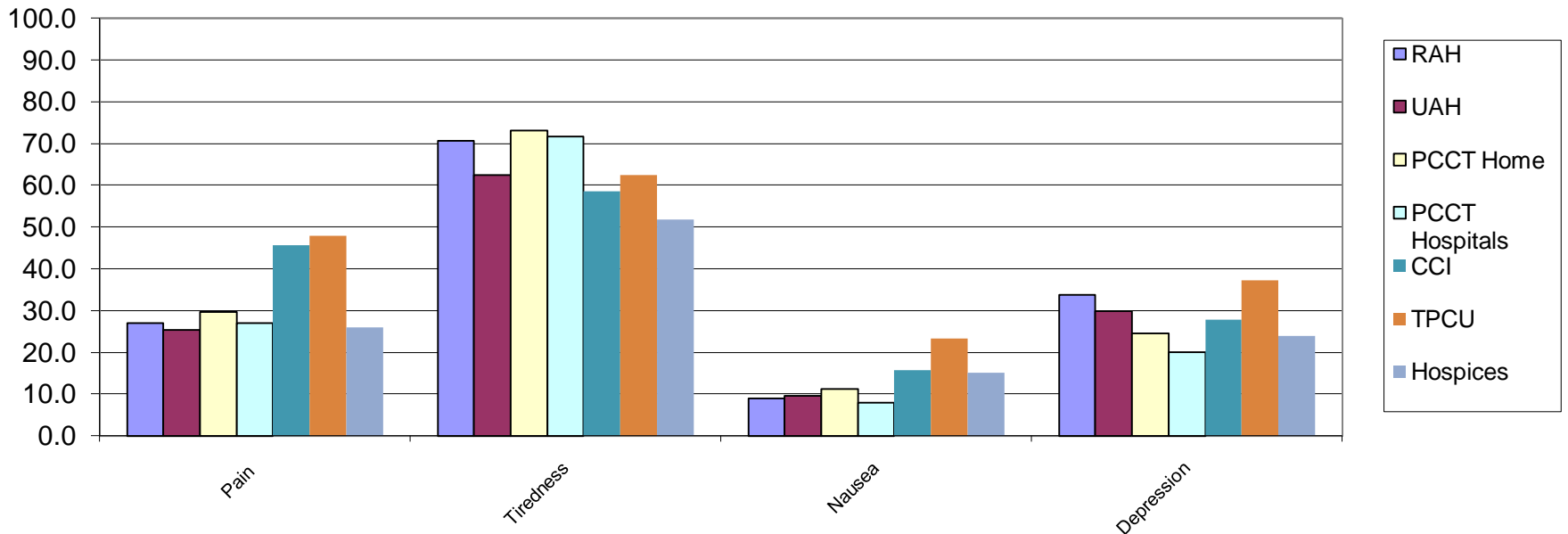
2012/2015 Initial Average PPS



2014/2015 First Average ESAS

	Pain	Tiredness	Nausea	Depression
RAH	27.0	70.6	8.9	33.8
UAH	25.3	62.4	9.5	29.9
PCCT Home	29.6	73.2	11.2	24.5
PCCT Hospitals	27.0	71.6	8.0	20.0
CCI	45.7	58.5	15.8	27.8
TPCU	47.9	62.4	23.3	37.2
Hospices	26.0	51.8	15.2	23.9

2014/2015 First Average ESAS

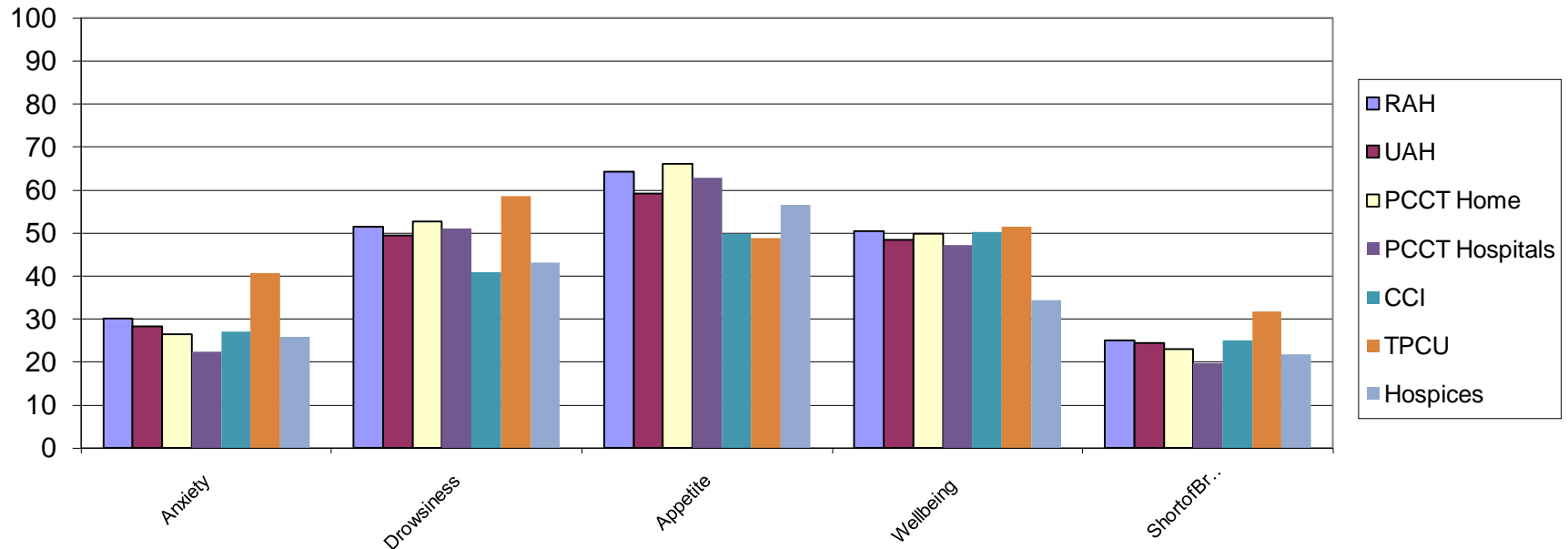


2014/2015 First Average ESAS_

cont'd

	Anxiety	Drowsiness	Appetite	Wellbeing	ShortofBreath
RAH	30.2	51.4	64.3	50.5	25.1
UAH	28.4	49.4	59.1	48.5	24.5
PCCT Home	26.4	52.7	66.2	49.8	23.1
PCCT Hospitals	22.4	51.1	62.9	47.2	19.7
CCI	27.0	40.8	49.9	50.2	25.0
TPCU	40.7	58.6	48.9	51.4	31.7
Hospices	25.9	43.2	56.5	34.3	21.7

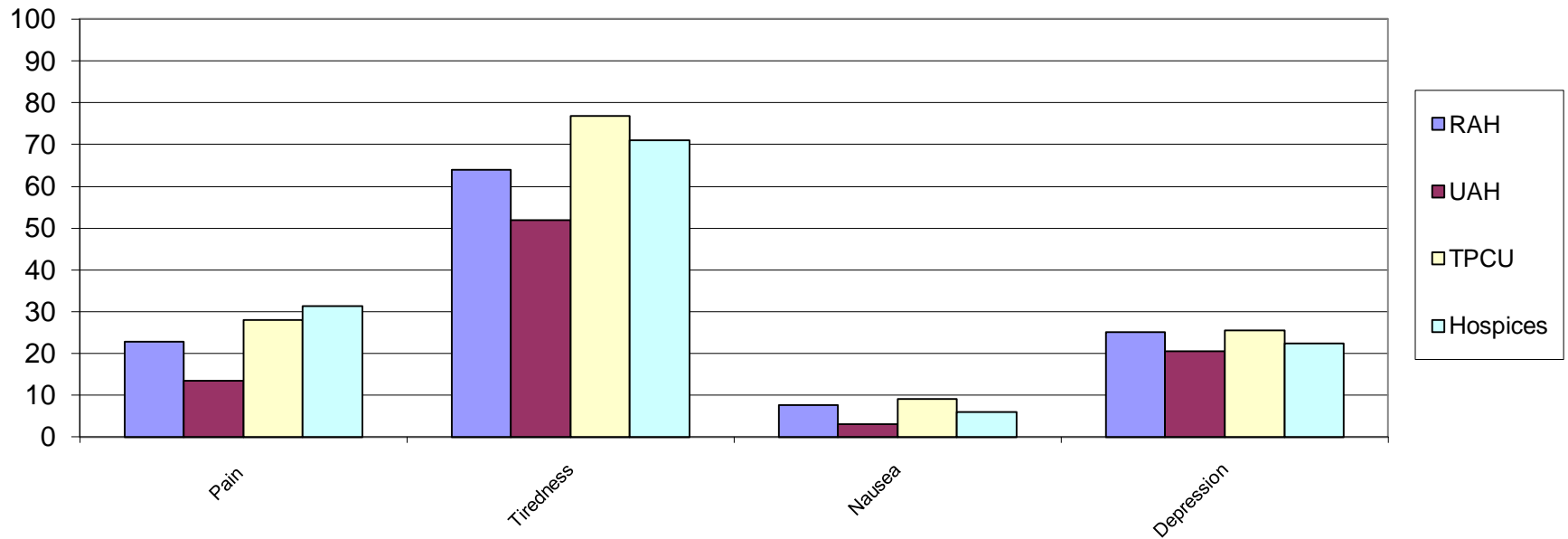
2014/2015 First Average ESAS



2014/2015 Last Average ESAS

	Pain	Tiredness	Nausea	Depression
RAH	22.8	63.9	7.6	25.0
UAH	13.5	52.0	3.0	20.6
TPCU	28.0	76.9	9.1	25.6
Hospices	31.3	71.1	6.0	22.3

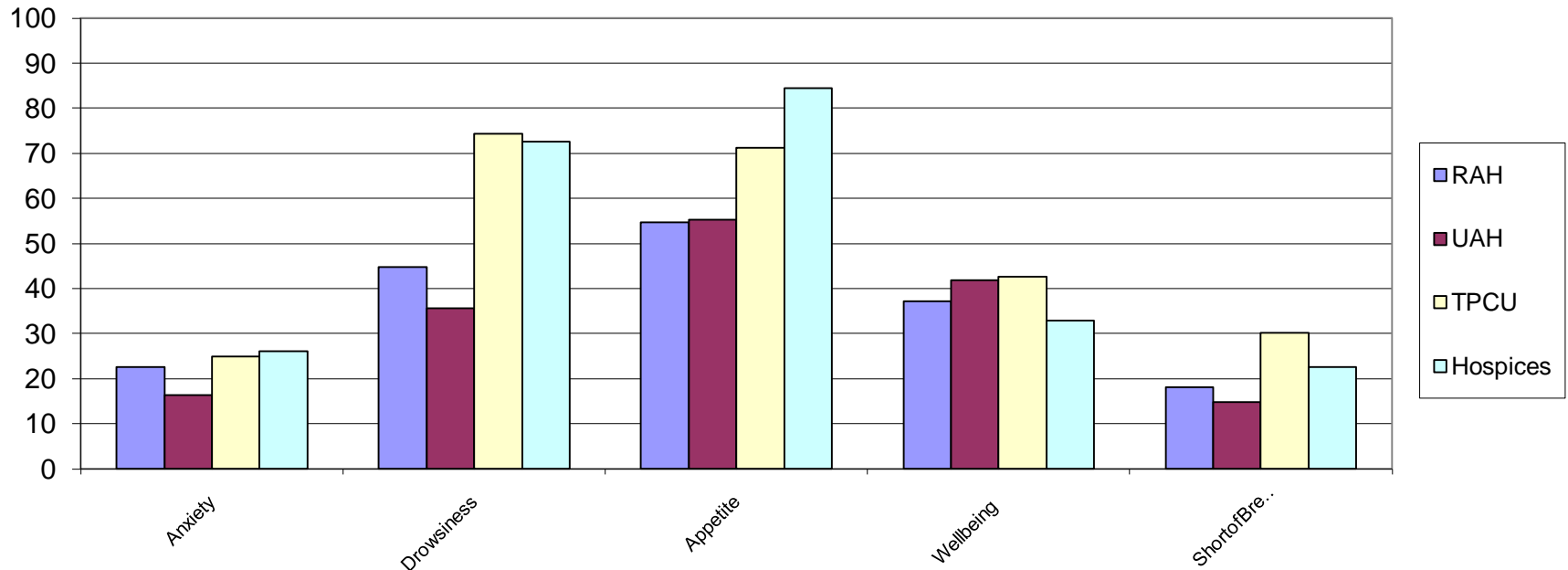
2014/2015 Last Average ESAS



2014/2015 Last Average ESAS *cont'd*

	Anxiety	Drowsiness	Appetite	Wellbeing	ShortofBreath
RAH	22.6	44.7	54.6	37.2	18.1
UAH	16.3	35.6	55.2	41.8	14.8
TPCU	24.9	74.4	71.3	42.6	30.1
Hospices	26.1	72.6	84.5	33.0	22.6

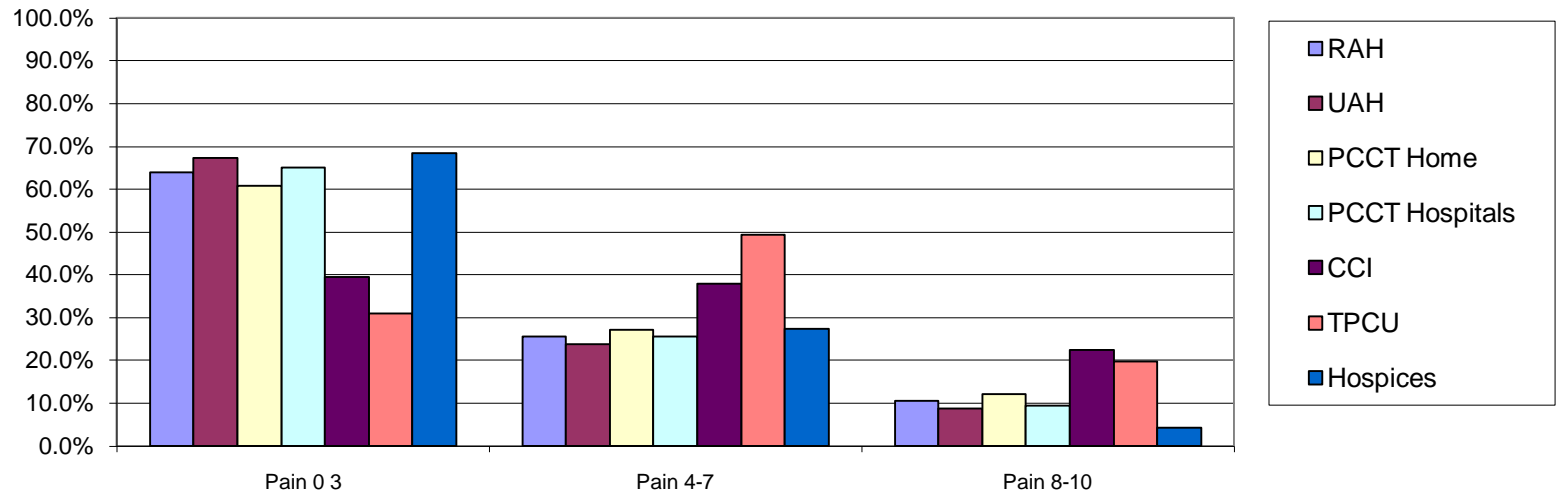
2014/2015 Last Average ESAS



2014/2015 First ESAS Pain Groupings

	Pain 0-3	Pain 4-7	Pain 8-10
RAH	63.9%	25.7%	10.5%
UAH	67.4%	23.8%	8.8%
PCCT Home	60.9%	27.1%	12.0%
PCCT Hospitals	65.1%	25.5%	9.3%
CCI	39.5%	38.0%	22.5%
TPCU	30.9%	49.3%	19.7%
Hospices	68.5%	27.3%	4.2%

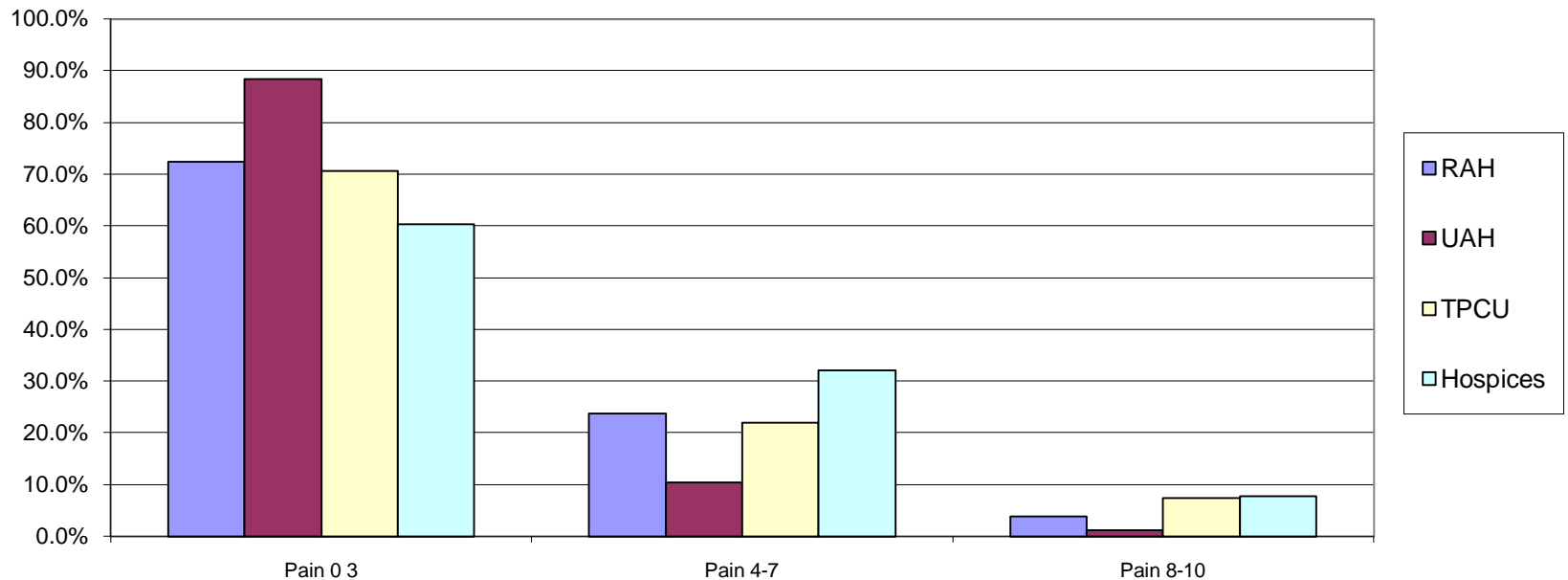
2014/2015 First ESAS Pain Groupings



2014/2015 Last ESAS Pain Groupings

	Pain 0-3	Pain 4-7	Pain 8-10
RAH	72.5%	23.7%	3.8%
UAH	88.4%	10.5%	1.1%
TPCU	70.7%	22.0%	7.3%
Hospices	60.3%	32.1%	7.7%

2014/2015 Last ESAS Pain Groupings



2014/2015 Goals of Care RMC Coding

	RAH Initial	UAH Initial	RAH Final	UAH final	Total	Total %
R1	69	29	2	0	100	8.7%
R2	7	0	0	1	8	0.7%
R3	12	9	1	0	22	1.9%
M1	284	136	13	3	436	38.0%
M2	28	22	4	1	55	4.8%
C1	149	123	71	38	381	33.2%
C2	79	29	27	11	146	12.7%
Total	628	348	118	54	1148	100.0%

2014/2015 Goals of Care RMC Coding & Discharge Locations

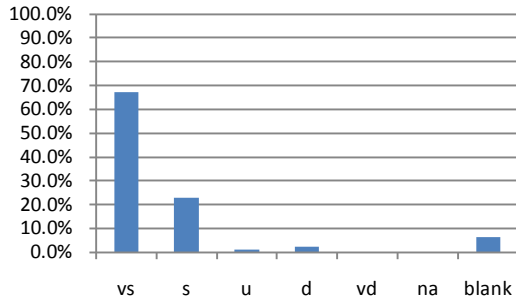
	Home	Deceased	TPCU	Hospice PCU	Other	Total
R1	20.9%	2.1%	2.9%	1.0%	9.9%	7.6%
R2	0.5%	0.3%	0.0%	0.0%	2.0%	0.6%
R3	3.8%	1.2%	0.0%	0.0%	3.4%	1.9%
M1	57.3%	22.2%	58.8%	3.0%	52.2%	33.4%
M2	7.1%	4.3%	5.9%	1.0%	3.9%	4.2%
C1	9.0%	38.0%	23.5%	85.9%	22.7%	37.8%
C2	1.4%	31.9%	8.8%	9.0%	5.9%	14.4%
Total	100.0%	100.0%	100.0%	100.0%	100.0%	100.0%

2014/2015 TPCU admission GCD by referral location (count)

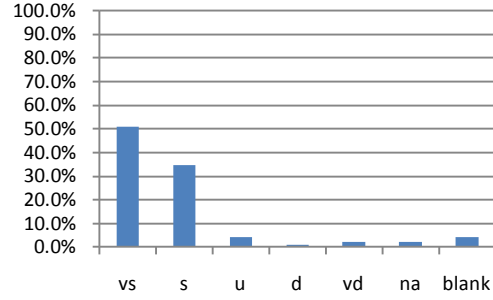
	RAH	UAH	CCI	PCCT Home	PCCT Hospital	Out of Zone	Total
R1	0	0	0	0	0	0	0
R2	0	0	1	0	0	0	1
R3	0	0	0	0	0	0	0
M1	14	8	6	50	18	2	98
M2	1	1	1	5	2	0	10
C1	2	7	2	22	17	1	51
C2	2	1	1	3	2	0	9
Total	19	17	11	80	39	3	169

EGH Famcare version 2 from Mar 2014 to Apr 2015 (n = 92)

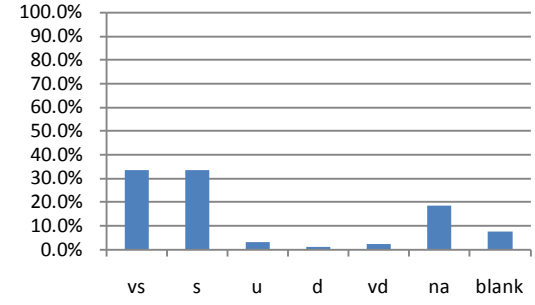
Q1_Patient comfort



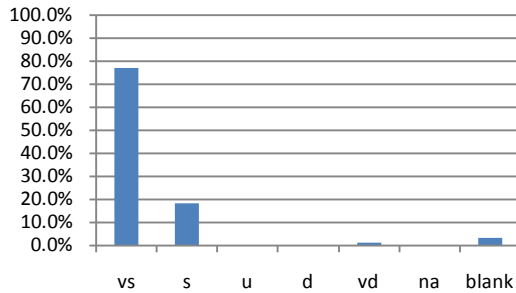
Q2_Way patient condition & progress explained



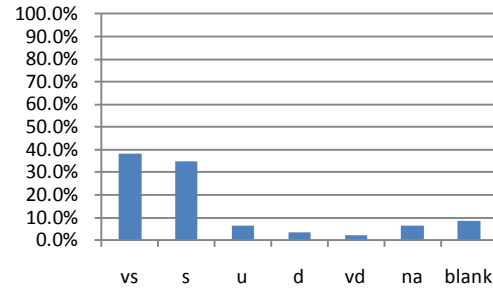
Q3_Treatment side effects information given



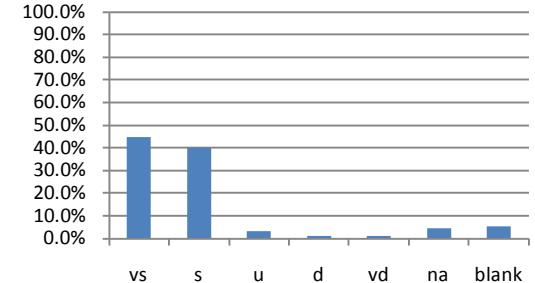
Q4_Way patient dignity respected



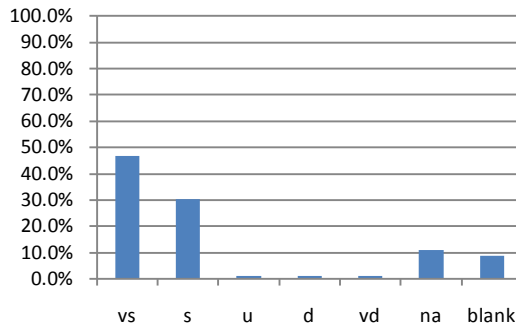
Q5_Patient condition and care meeting with PC team



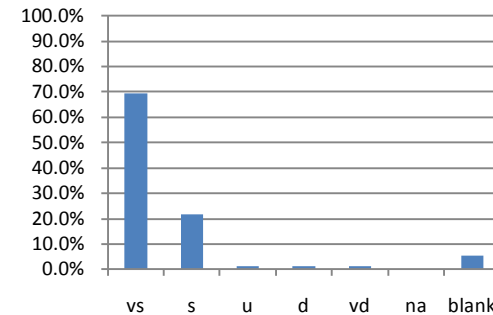
Q6_Symptom treatment response time



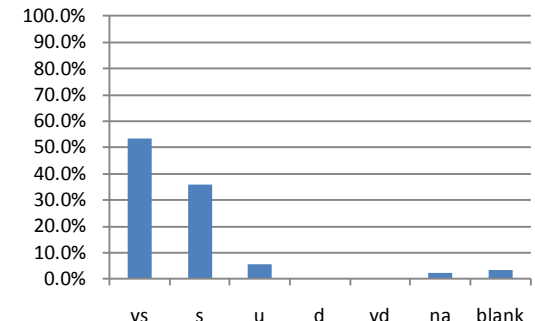
Q7_Patient symptom attention by PC team



Q8_Physical needs for comfort met

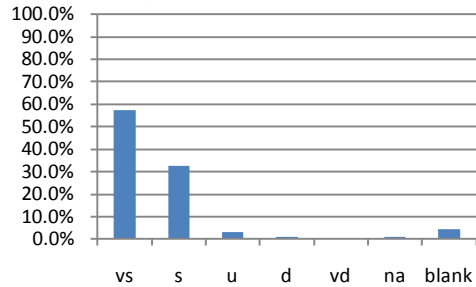


Q9_PC team availability to family

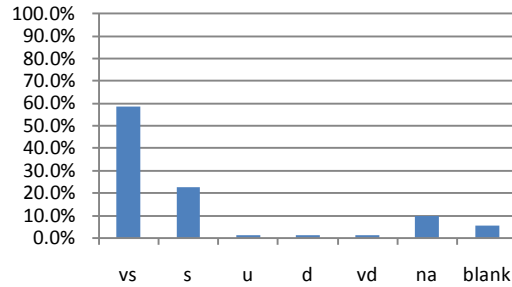


EGH Famcare version 2 from Mar 2014 to Apr 2015 (n = 92)_cont'd

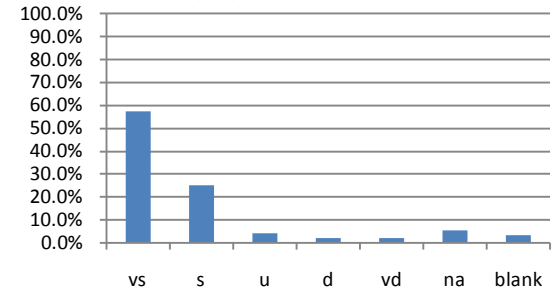
Q10_ Family emotional support by PC team



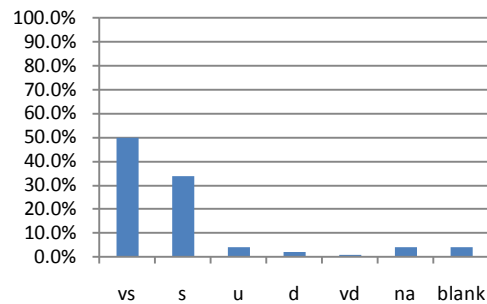
Q11_ Practical assistance by PC team



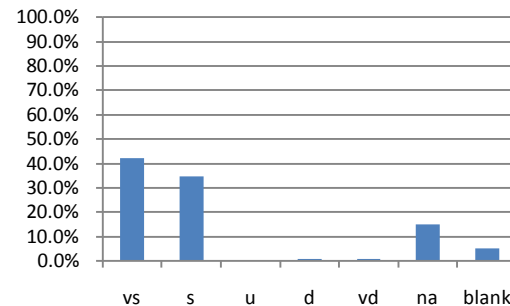
Q12_ Doctor attention to patient symptoms



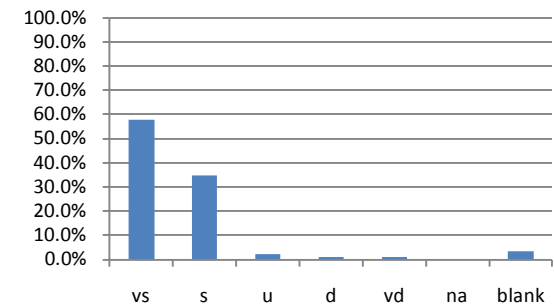
Q13_ Way family included in treatment and care decisions



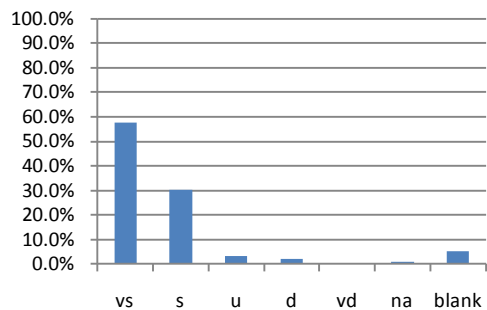
Q14_ Patient symptom management information



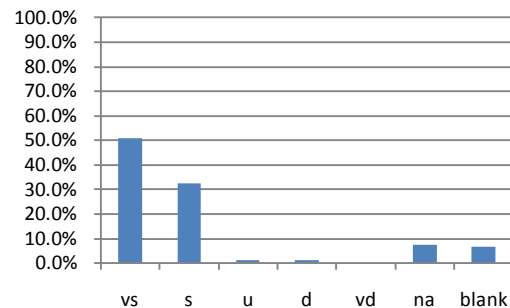
Q15_ Patient symptom management efficiency



Q16_ Response to changes in patient care needs



Q17_ Patient emotional support by PC team

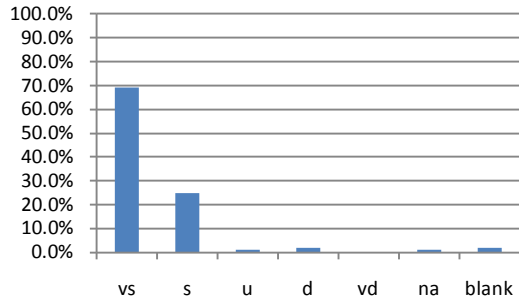


Note

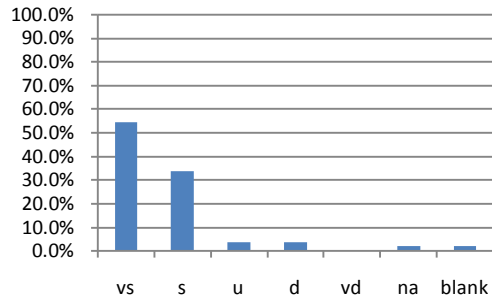
response	description
vs	verysatisfied
s	satisfied
u	undecided
d	dissatisfied
vd	very dissatisfied
na	non-applicable
blank	blank

NCCC Famcare version 2 from March 2014 to April 2015 (n = 101)

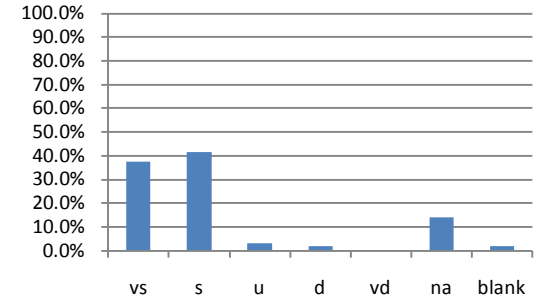
Q1_Patient comfort



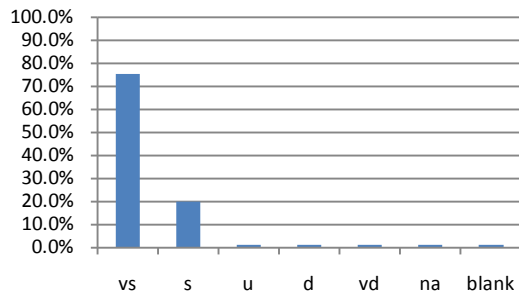
Q2_Way patient condition & progress explained



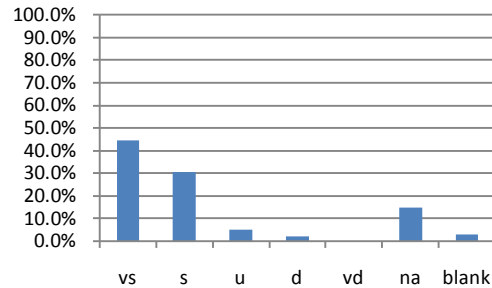
Q3_Treatment side effects information given



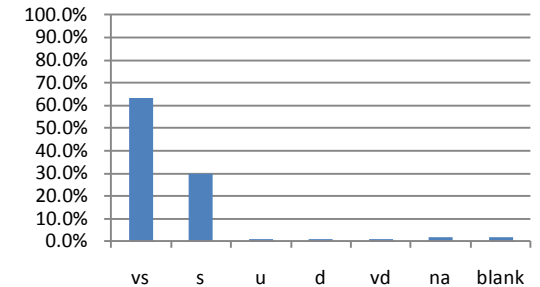
Q4_Way patient dignity respected



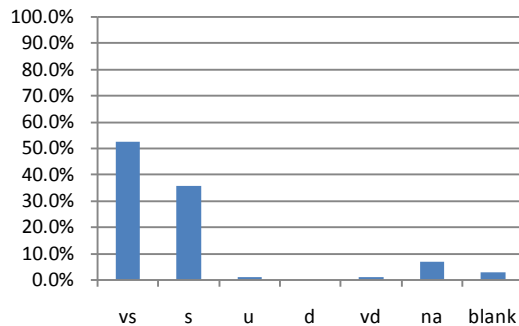
Q5_Patient condition and care meeting with PC team



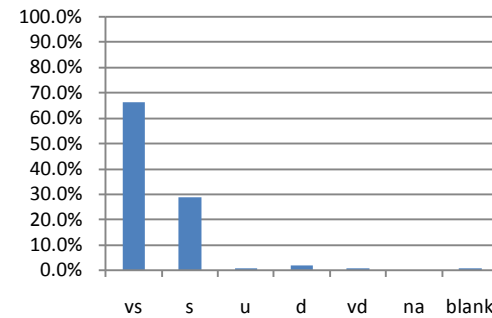
Q6_Symptom treatment response time



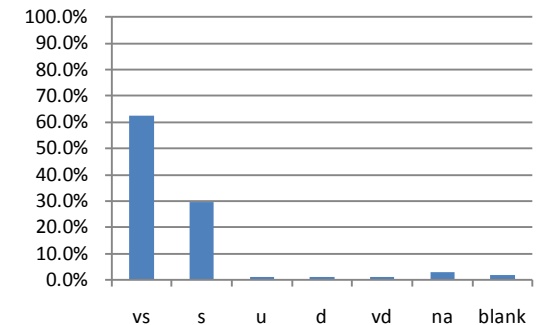
Q7_Patient symptom attention by PC team



Q8_Physical needs for comfort met

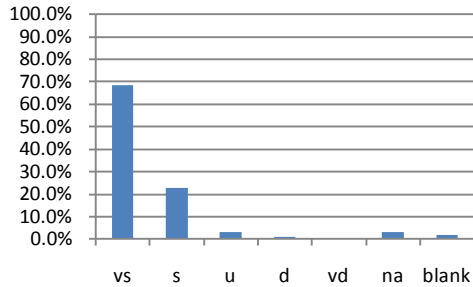


Q9_PC team availability to family

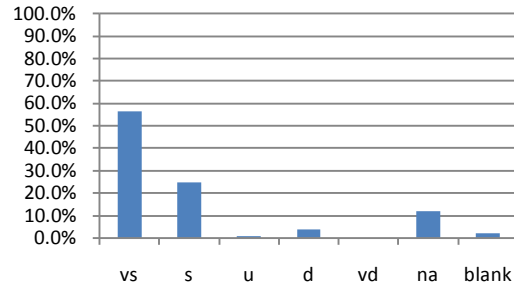


NCCC Famcare version 2 from March 2014 to April 2015 (n = 101) _cont'd

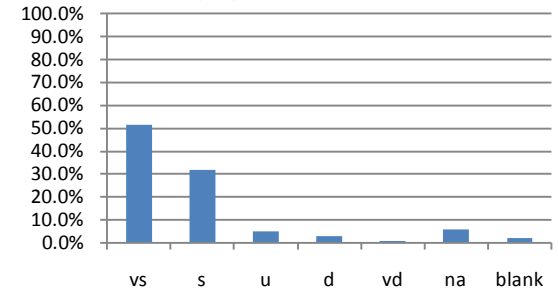
Q10_ Family emotional support by PC team



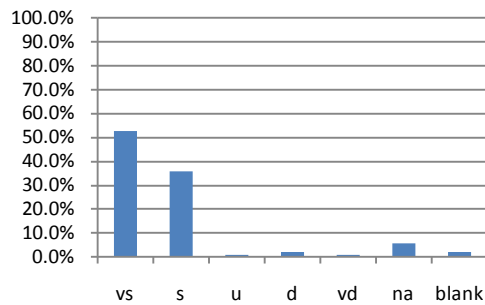
Q11_ Practical assistance by PC team



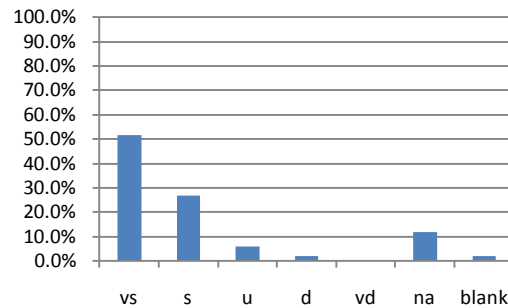
Q12_ Doctor attention to patient symptoms



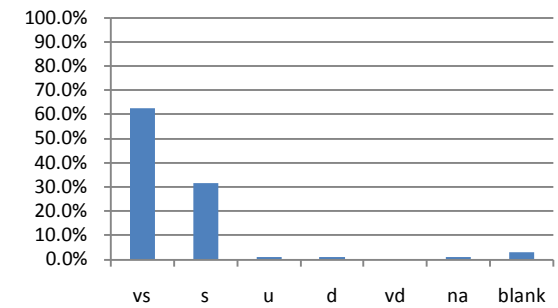
Q13_ Way family included in treatment and care decisions



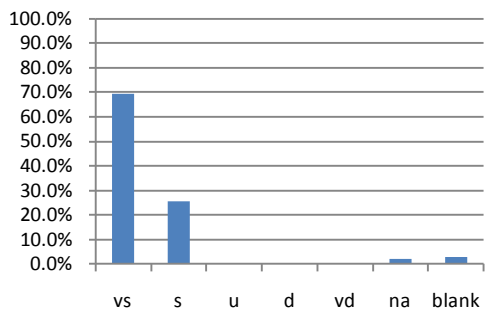
Q14_ Patient symptom management information



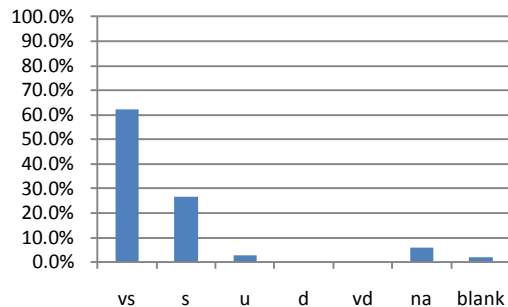
Q15_ Patient symptom management efficiency



Q16_ Response to changes in patient care needs



Q17_ Patient emotional support by PC team

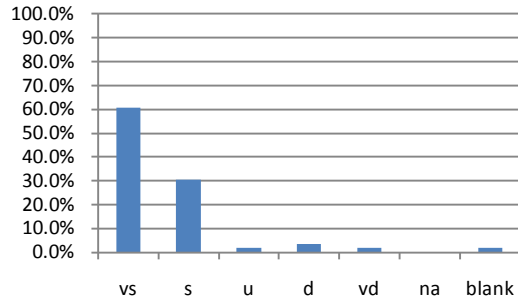


Note

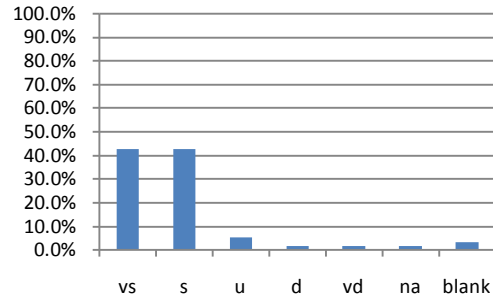
response	description
vs	verysatisfied
s	satisfied
u	undecided
d	dissatisfied
vd	very dissatisfied
na	non-applicable
blank	blank

STJO Famcare version 2 from March 2014 to March 2015 (n = 56)

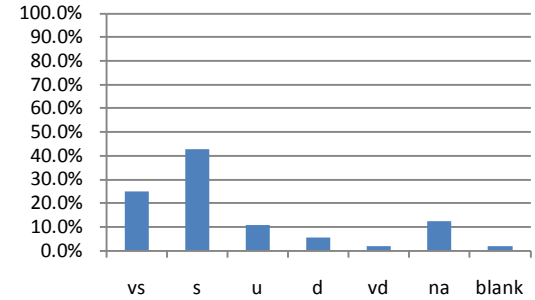
Q1_Patient comfort



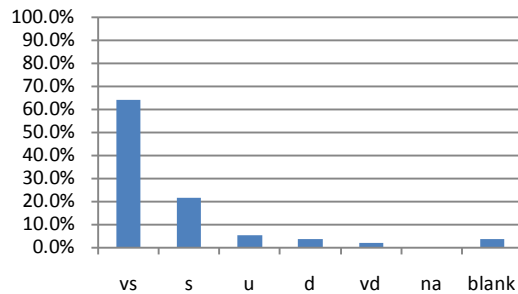
Q2_Way patient condition & progress explained



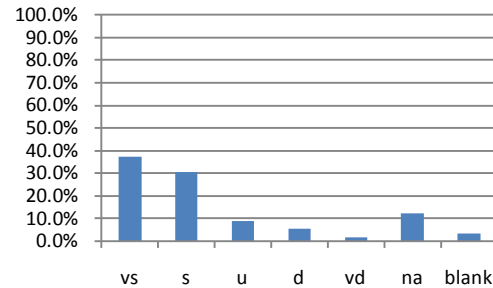
Q3_Treatment side effects information given



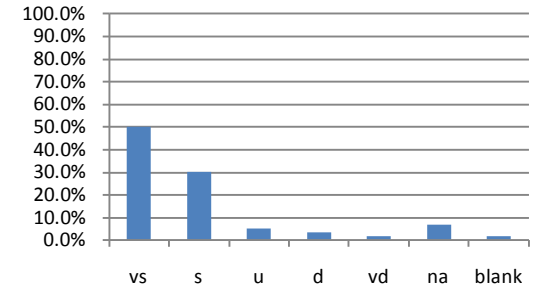
Q4_Way patient dignity respected



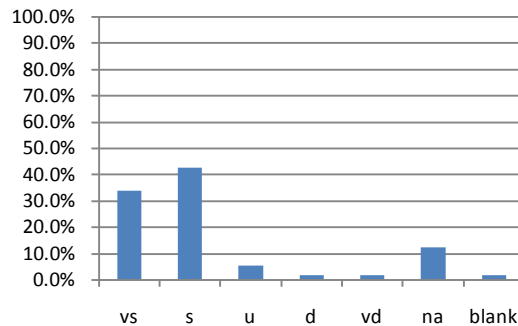
Q5_Patient condition and care meeting with PC team



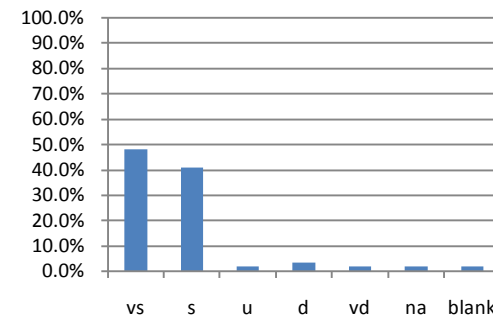
Q6_Symptom treatment response time



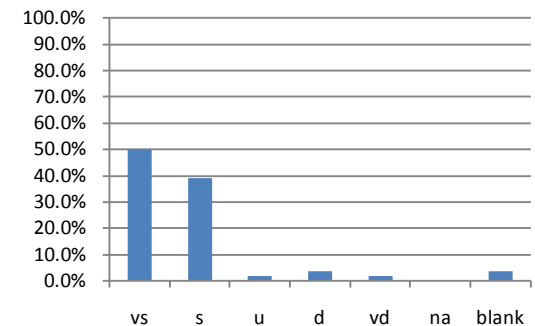
Q7_Patient symptom attention by PC team



Q8_Physical needs for comfort met

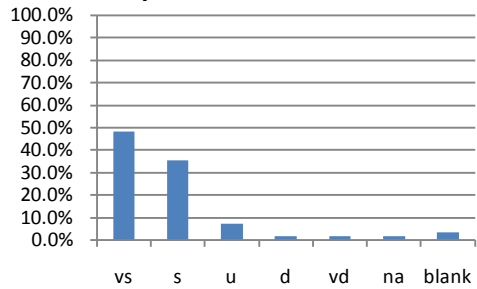


Q9_PC team availability to family

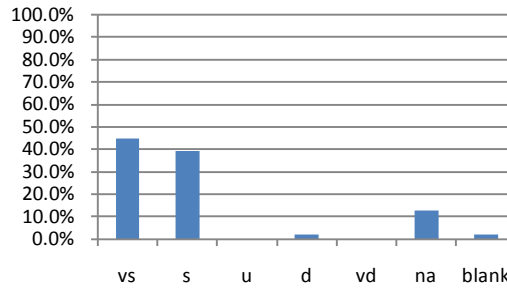


STJO Famcare version 2 from March 2014 to March 2015 (n = 56) _cont'd

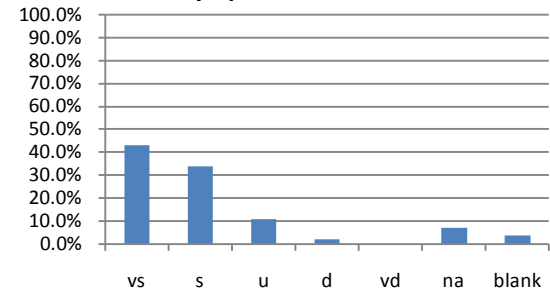
Q10_ Family emotional support by PC team



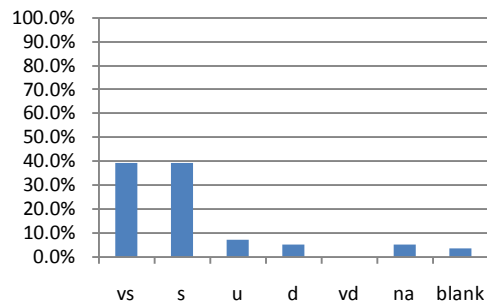
Q11_ Practical assistance by PC team



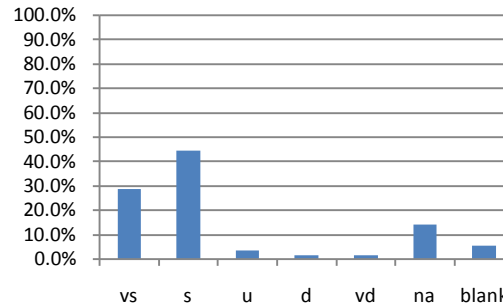
Q12_ Doctor attention to patient symptoms



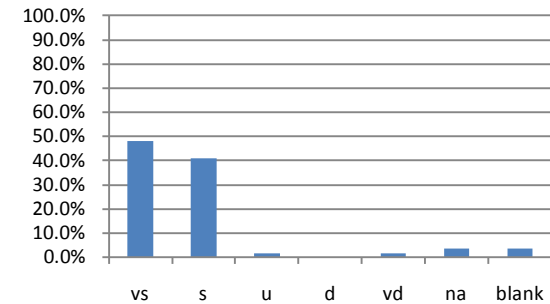
Q13_ Way family included in treatment and care decisions



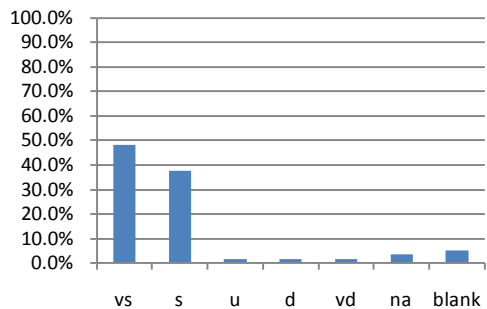
Q14_ Patient symptom management information



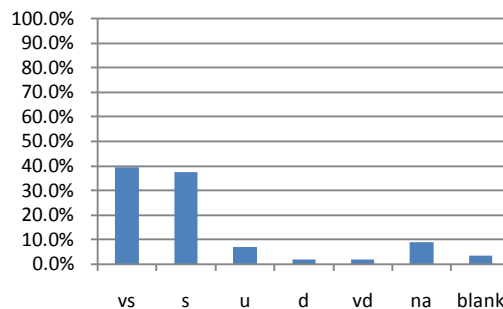
Q15_ Patient symptom management efficiency



Q16_ Response to changes in patient care needs



Q17_ Patient emotional support by PC team

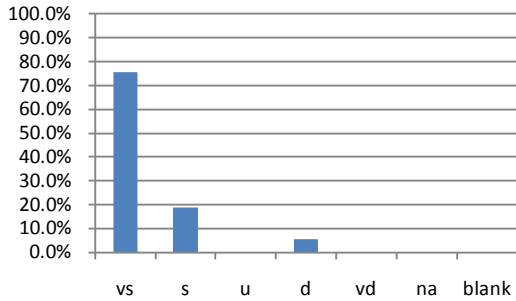


Note

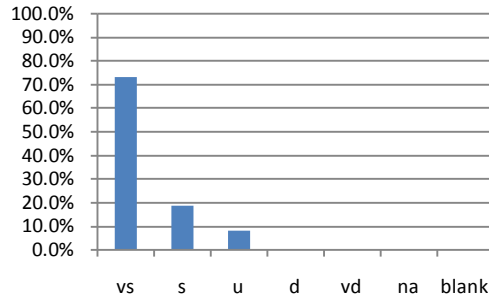
response	description
vs	verysatisfied
s	satisfied
u	undecided
d	dissatisfied
vd	very dissatisfied
na	non-applicable
blank	blank

TPCU Famcare version 2 from March 2014 to March 2015 (n = 37)

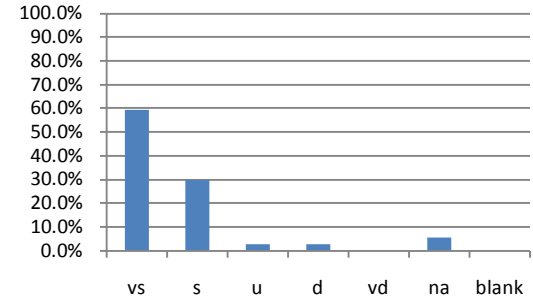
Q1_Patient comfort



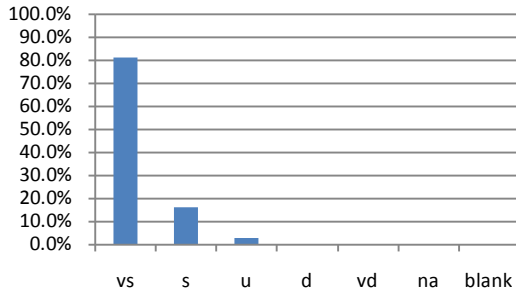
Q2_Way patient condition & progress explained



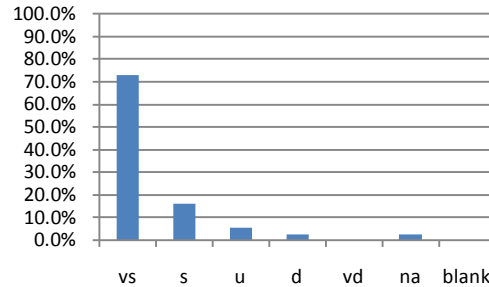
Q3_Treatment side effects information given



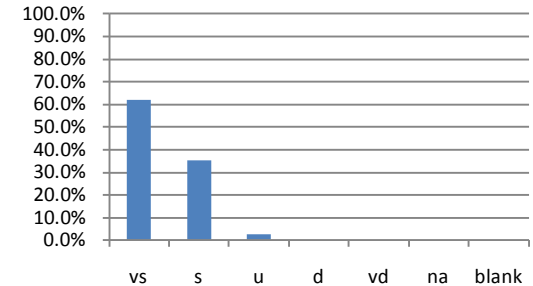
Q4_Way patient dignity respected



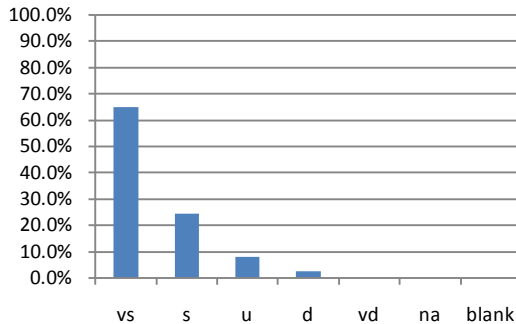
Q5_Patient condition and care meeting with PC team



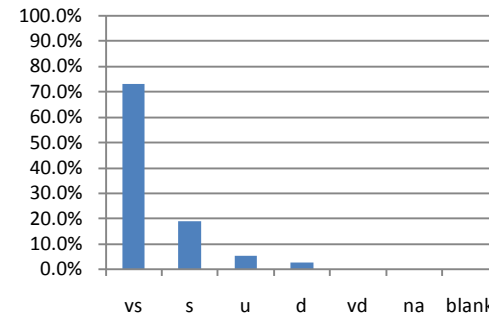
Q6_Symptom treatment response time



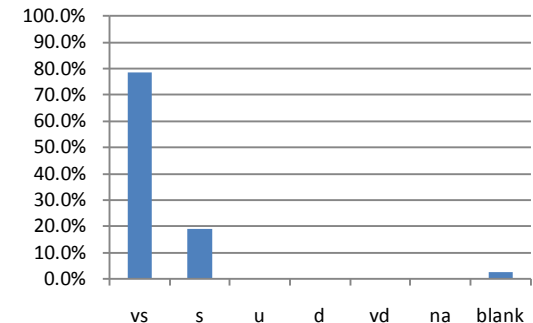
Q7_Patient symptom attention by PC team



Q8_Physical needs for comfort met

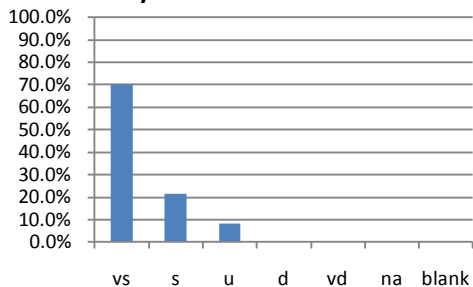


Q9_PC team availability to family

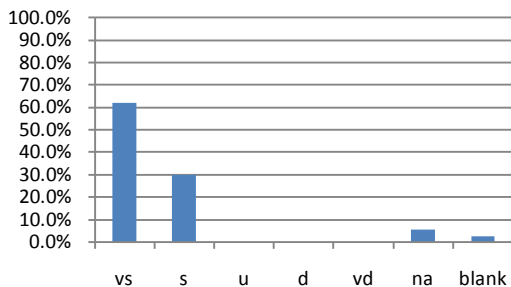


TPCU Famcare version 2 from March 2014 to March 2015 (n = 37) _cont'd

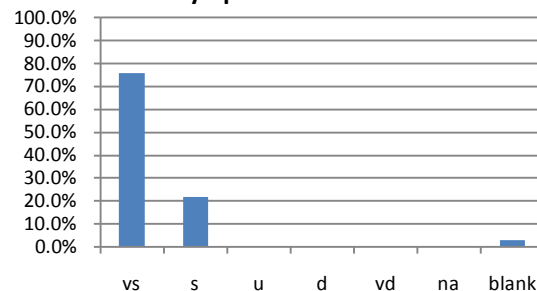
Q10_Family emotional support by PC team



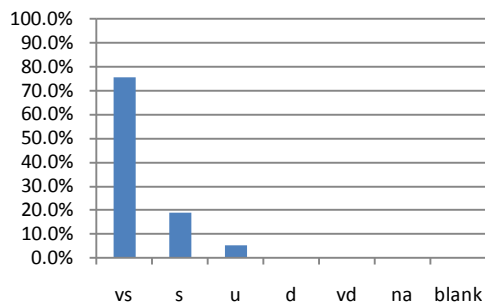
Q11_Practical assistance by PC team



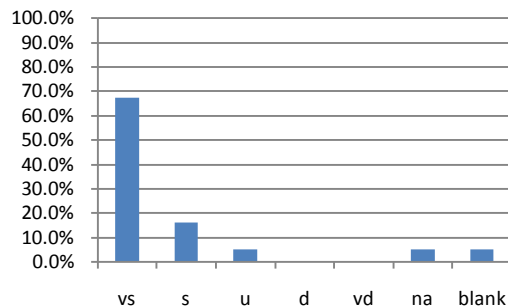
Q12_Doctor attention to patient symptoms



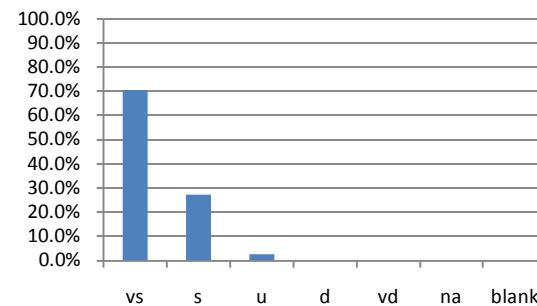
Q13_Way family included in treatment and care decisions



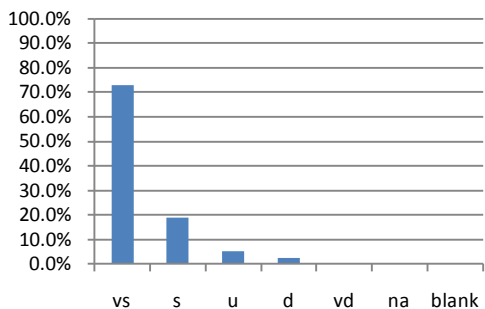
Q14_Patient symptom management information



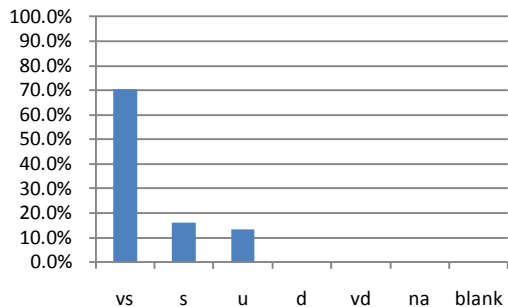
Q15_Patient symptom management efficiency



Q16_Response to changes in patient care needs



Q17_Patient emotional support by PC team



Note

response	description
vs	verysatisfied
s	satisfied
u	undecided
d	dissatisfied
vd	very dissatisfied
na	non-applicable
blank	blank

Accomplishments in 2015

- Preferences for Location of care and location of death – manuscript in review on this topic
- New Hospice PCU locations – Stony Plain opened and St Albert location pending
- Triage process with expanded Hospice PCU locations
- Administrative support and new program council structure (Program council, Rapid rounds)
- Workforce planning for clinical teams
- Evolving role of Covenant Health Palliative Institute and the Provincial P & EOL care initiatives

Other Accomplishments

- Comfort Care Beds at the RAH – since November 2014 about 220 referrals, mostly non cancer, median 1 day admission
- Palliative EMS

Important Issues for 2015/2016

- Supreme court decision on Physician assisted suicide/Euthanasia – how should our Zone palliative care program respond?
- Early palliative care for cancer and non cancer populations
- Optimizing utilization of hospice PCU beds