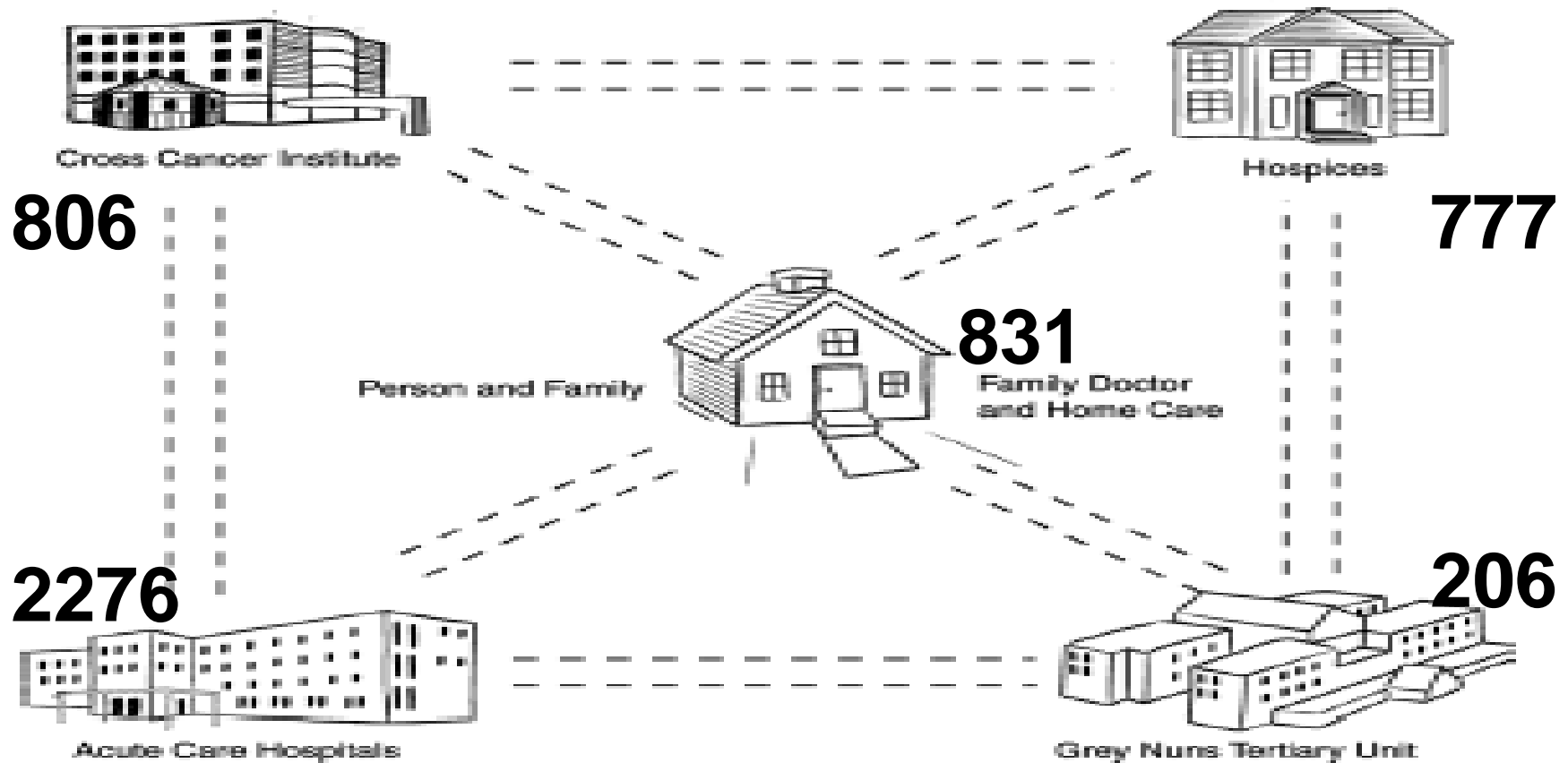


EZPCP – 2014 Cross Site Report

How are we doing and where should
we be going?

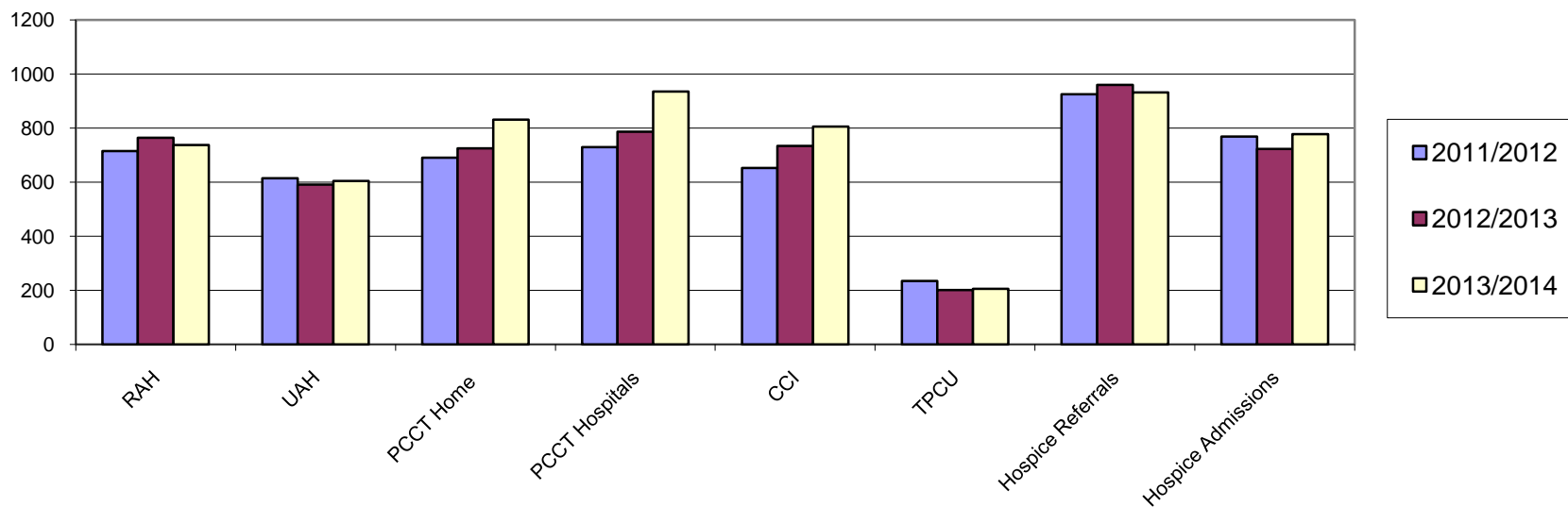
Comprehensive Integrated Clinical PC Service



2011/2014 EZPCP Services : Consults/Discharges

	RAH	UAH	PCCT		CCI	TPCU	Hospices	
	RAH	UAH	PCCT Home	PCCT Hospitals	CCI	TPCU	Hospice Referrals	Hospice Admissions
2011/2012	715	614	690	730	652	235	925	769
2012/2013	764	591	725	787	734	201	959	723
2013/2014	737	604	831	935	806	206	932	777

2011/2014 Palliative Care Consults/ Discharges



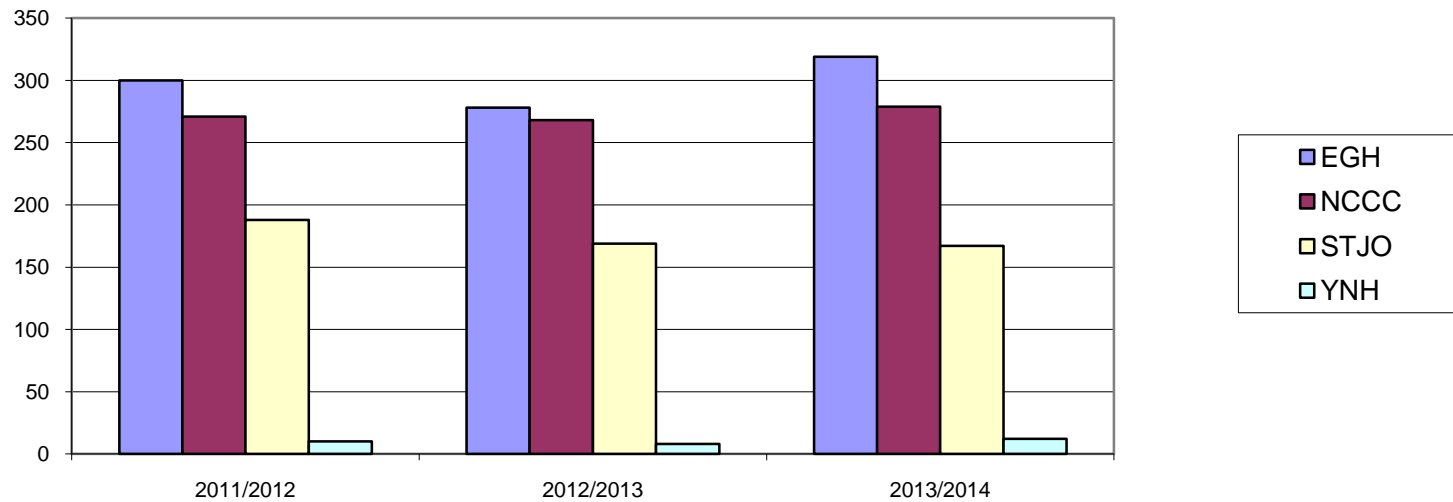
2011/2014 PCCT Hospitals

REFERRAL HOSPITALS	2011/2012	2012/2013	2013/2014
GREY NUNS HOSPITAL	233	281	324
MISERICORDIA HOSPITAL	206	199	216
STURGEON HOSPITAL	138	166	164
OTHER HOSPITALS	153	141	231
TOTAL	730	787	935

2011/2014 Hospice Admissions

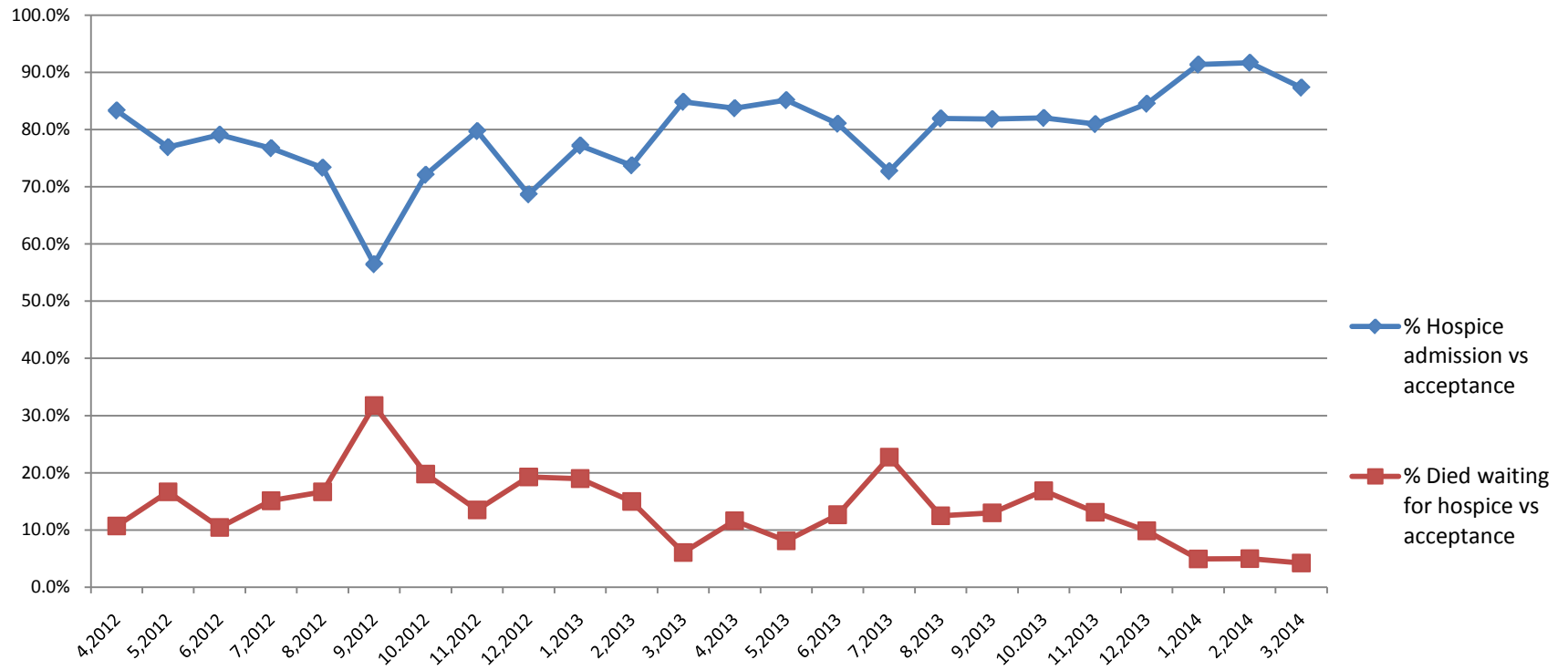
	2011/2012	2012/2013	2013/2014
EGH	300	278	319
NCCC	271	268	279
STJO	188	169	167
YNH	10	8	12
TOTAL	769	723	777

2011/2014 Hospice Admissions



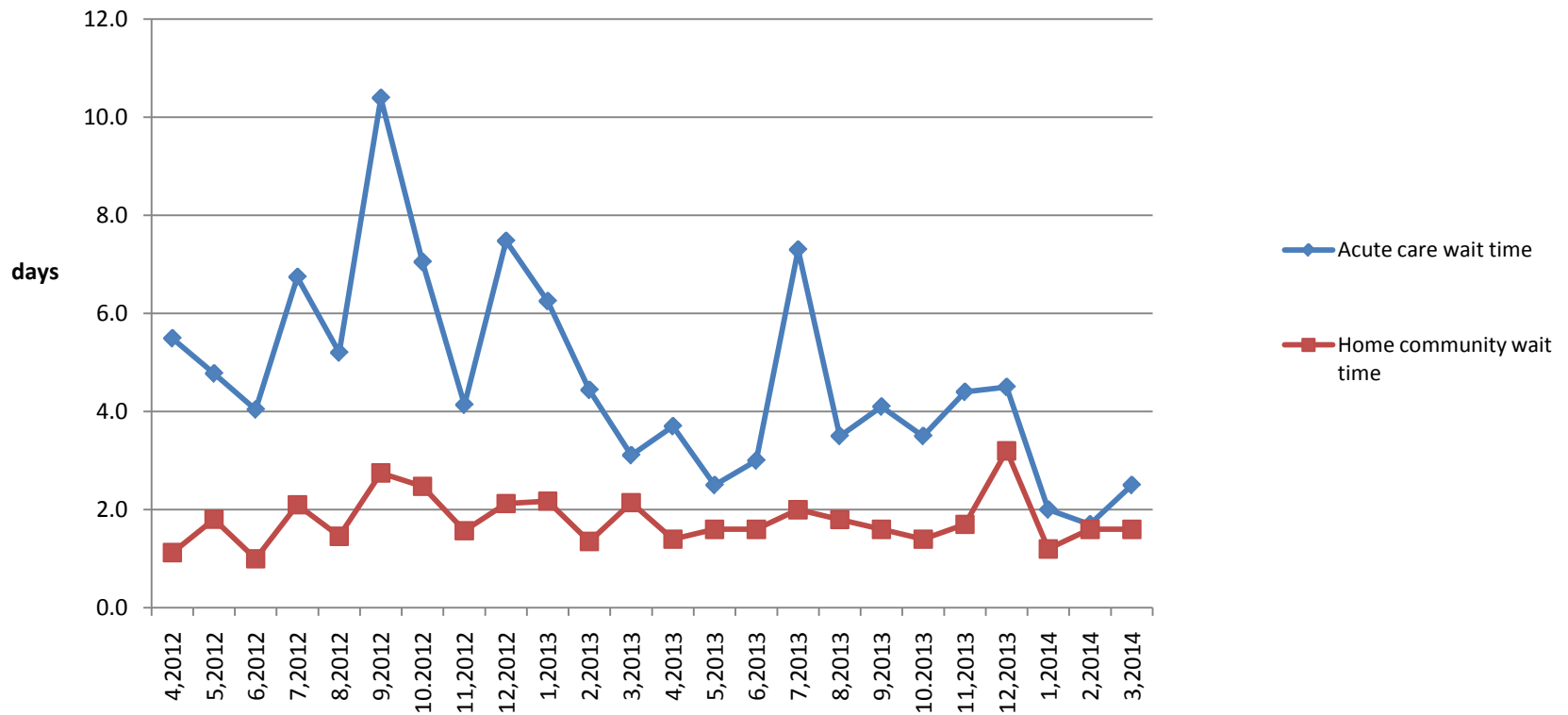
2012/2014 Hospice Acceptance & Outcomes

% Hospice Admissions & % Died Waiting 2012/2014



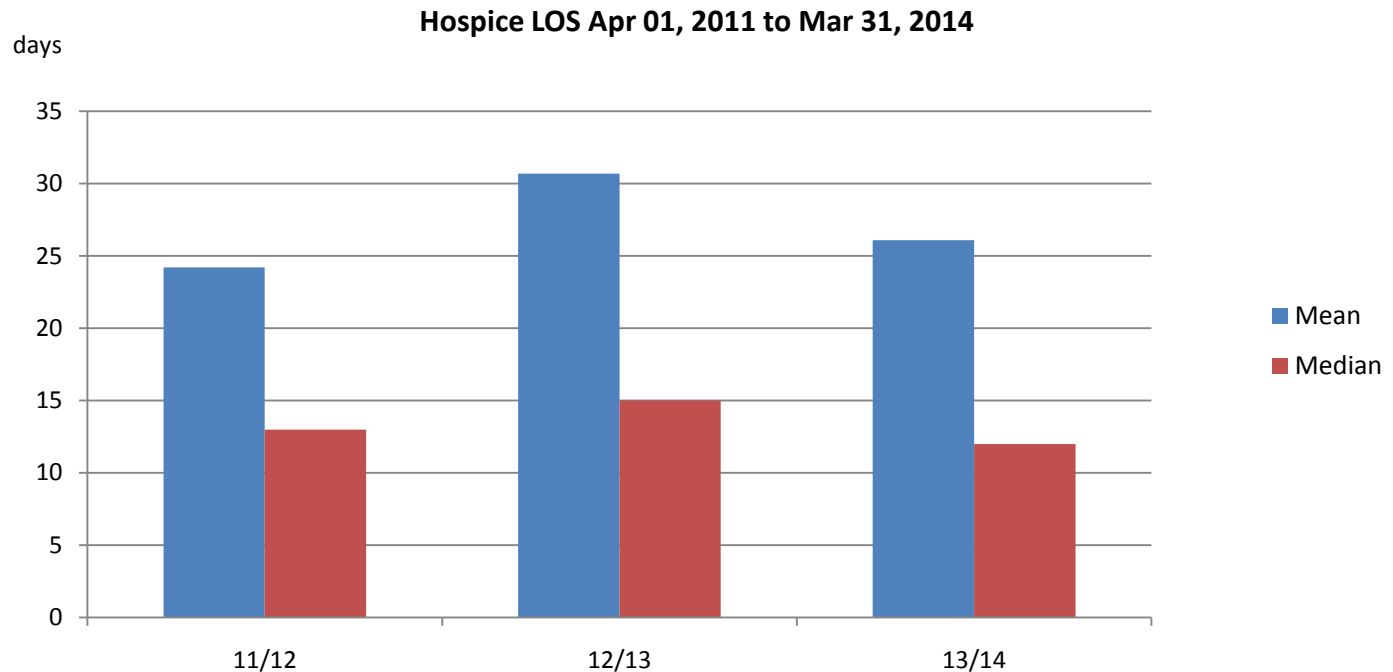
2012/2014 Hospice Average Waiting Time

Hospice Average Waiting Time for Acute Care and Home Community 2012/2014



2011/2014 Hospice LOS (days)

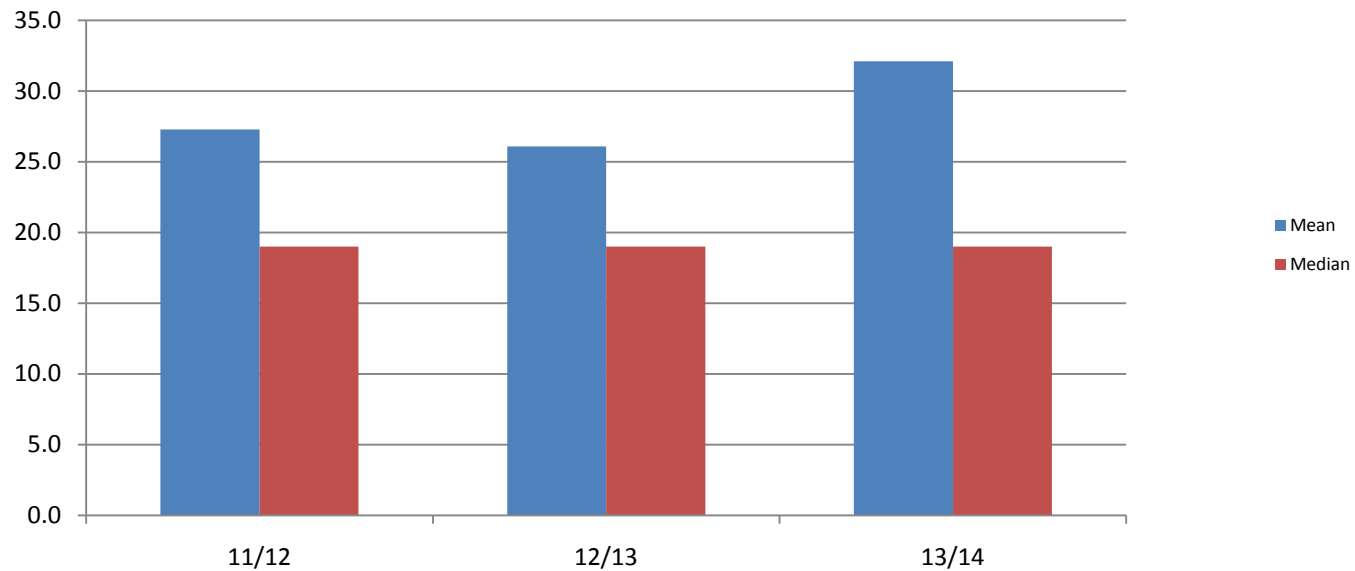
	11/12	12/13	13/14
Mean	24.2	30.7	26.1
Median	13	15	12



2011/2014 TPCU LOS (days)

	11/12	12/13	13/14
Mean	27.3	26.1	32.1
Median	19.0	19.0	19.0

TPCU LOS Apr 01, 2011 to Mar 31, 2014



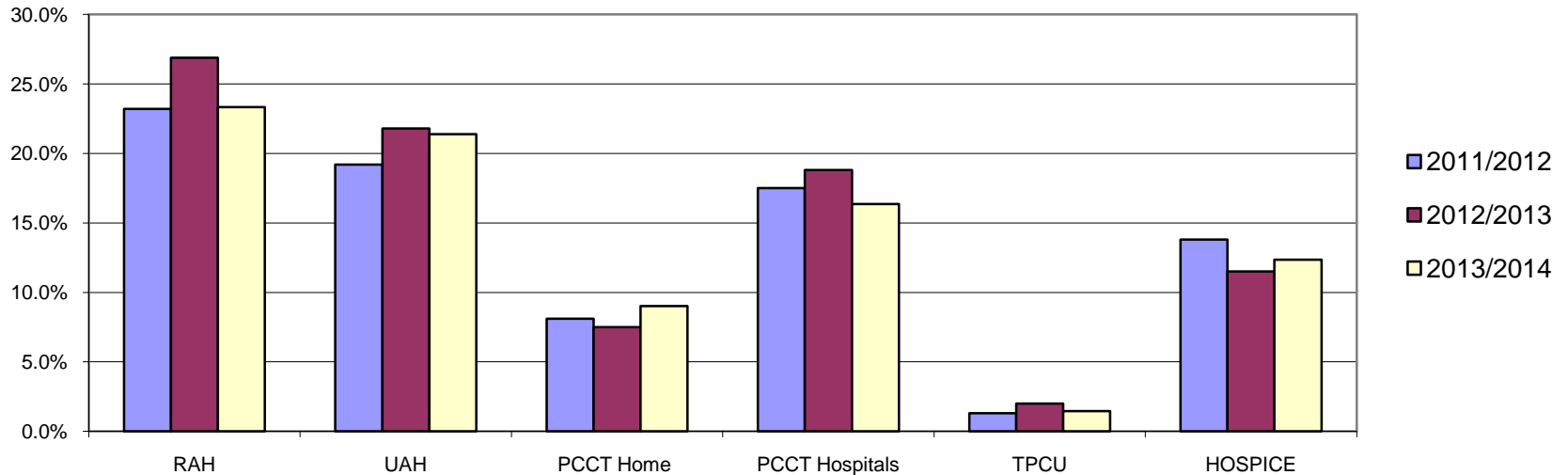
TPCU – “comfort care beds”

	TPCU	Comfort care
Admission numbers	206	203
Beds	20	3
Median age	61	79
Average Length of stay	32	7

2011/2014 Non Cancer Diagnosis

	RAH	UAH	PCCT Home	PCCT Hospitals	TPCU	HOSPICE
2011/2012	23.2%	19.2%	8.1%	17.5%	1.3%	13.8%
2012/2013	26.9%	21.8%	7.5%	18.8%	2.0%	11.5%
2013/2014	23.3%	20.8%	9.0%	16.4%	1.5%	12.4%

2011/2014 Non Cancer Diagnosis



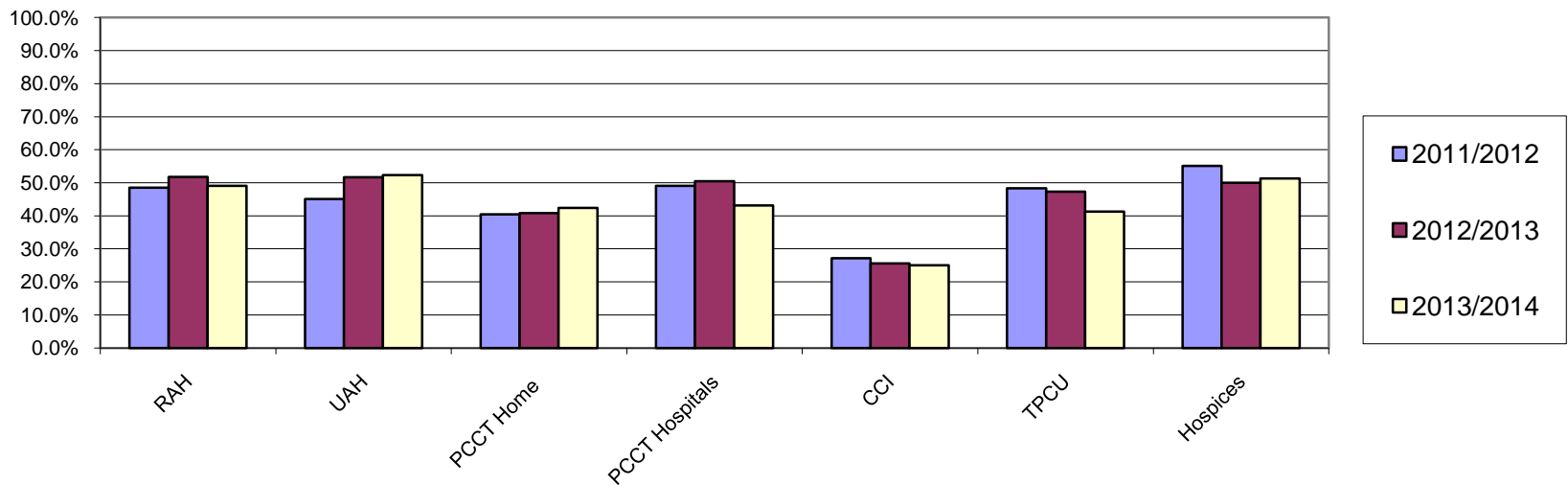
2013/2014 Non Cancer Diagnosis

	RAH	UAH	PCCT Home	PCCT Hospitals	TPCU	HOSPICE
NEUROMUSCULAR	55	33	4	20	0	16
CARDIOVASCULAR	48	44	35	60	0	35
INFECTION	16	4	0	2	0	1
OTHER NON CANCER	53	45	36	71	3	44
TOTAL	172	126	75	153	3	96

Initial % MMSE LESS Than Expected MMSE

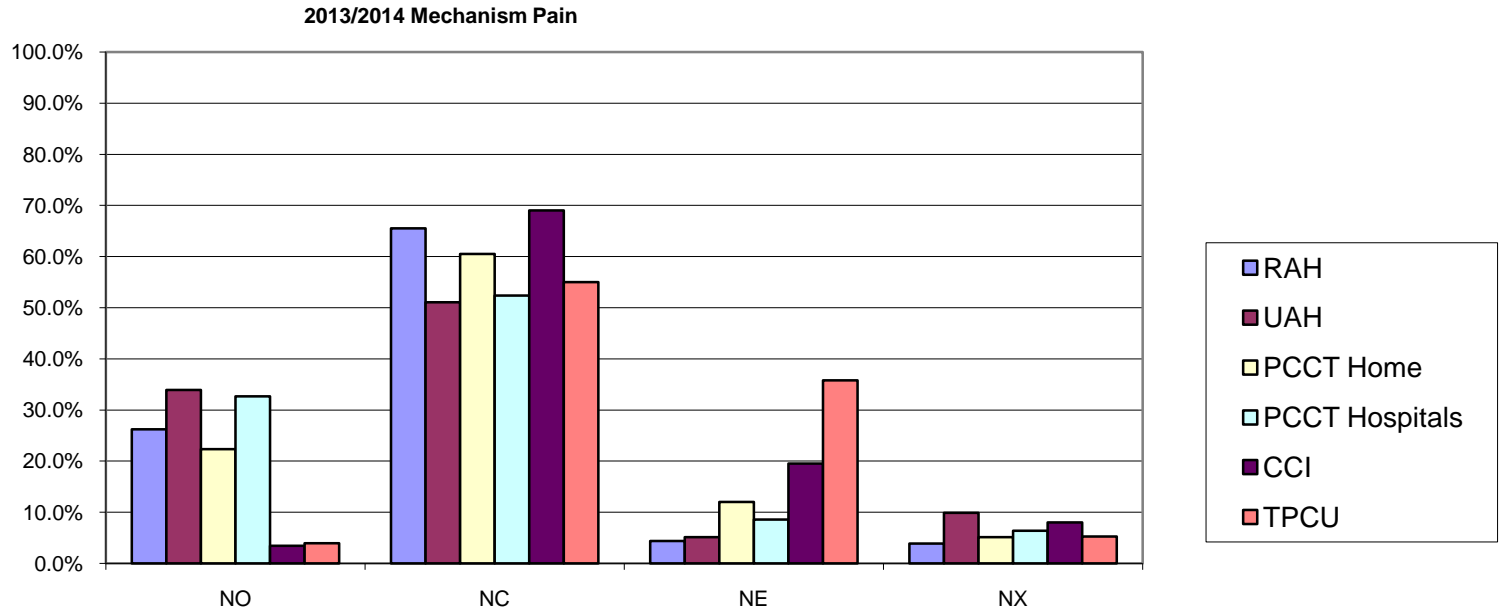
	RAH	UAH	PCCT Home	PCCT Hospitals	CCI	TPCU	Hospices
2011/2012	48.5%	45.1%	40.4%	49.1%	27.2%	48.3%	55.1%
2012/2013	51.80%	50.60%	40.80%	50.50%	25.60%	47.30%	50.00%
2013/2014	49.1%	52.3%	42.4%	43.1%	25.1%	41.3%	51.3%

2011/2014 Initial MMSE < Expected MMSE



Edmonton Classification System for Cancer Pain_Mechanism Pain

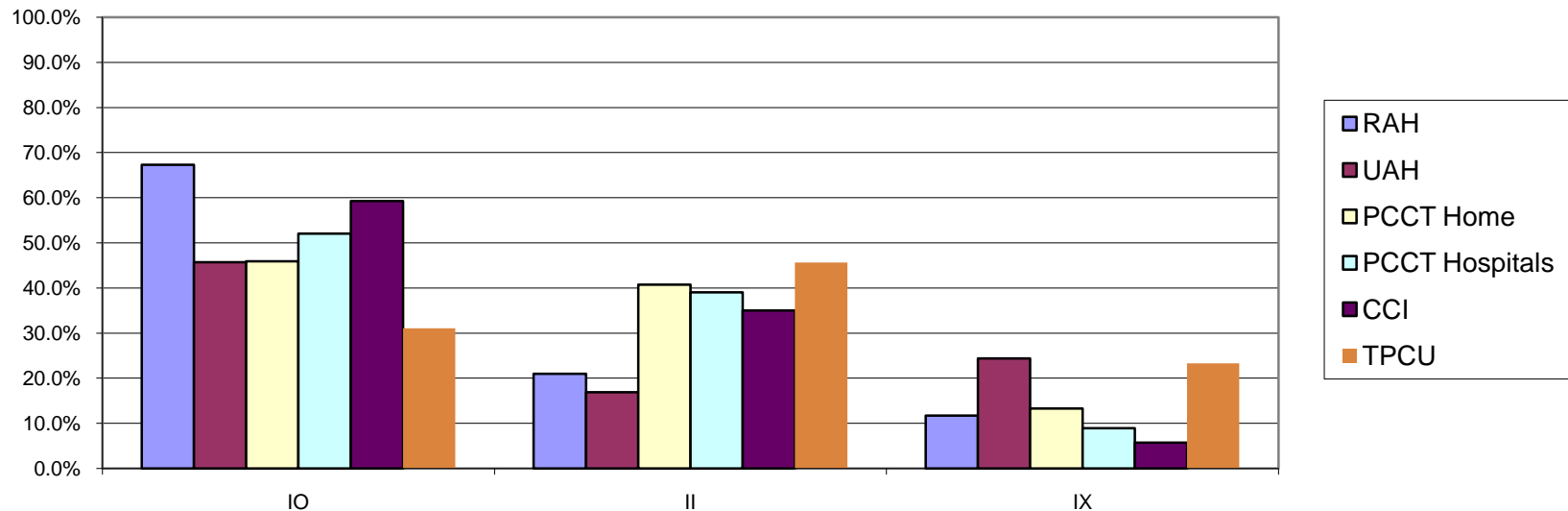
2013/2014	NO	NC	NE	NX
RAH	26.2%	65.5%	4.4%	3.9%
UAH	33.9%	51.1%	5.1%	9.9%
PCCT Home	22.3%	60.5%	12.0%	5.1%
PCCT Hospitals	32.7%	52.4%	8.6%	6.4%
CCI	3.4%	69.0%	19.5%	8.0%
TPCU	3.9%	55.0%	35.8%	5.2%



Edmonton Classification System for Cancer Pain_Incident Pain

2013/2014	IO	II	IX
RAH	67.3%	21.0%	11.7%
UAH	45.7%	16.9%	24.4%
PCCT Home	45.9%	40.8%	13.3%
PCCT Hospitals	52.1%	39.0%	8.9%
CCI	59.3%	35.0%	5.7%
TPCU	31.1%	45.7%	23.3%

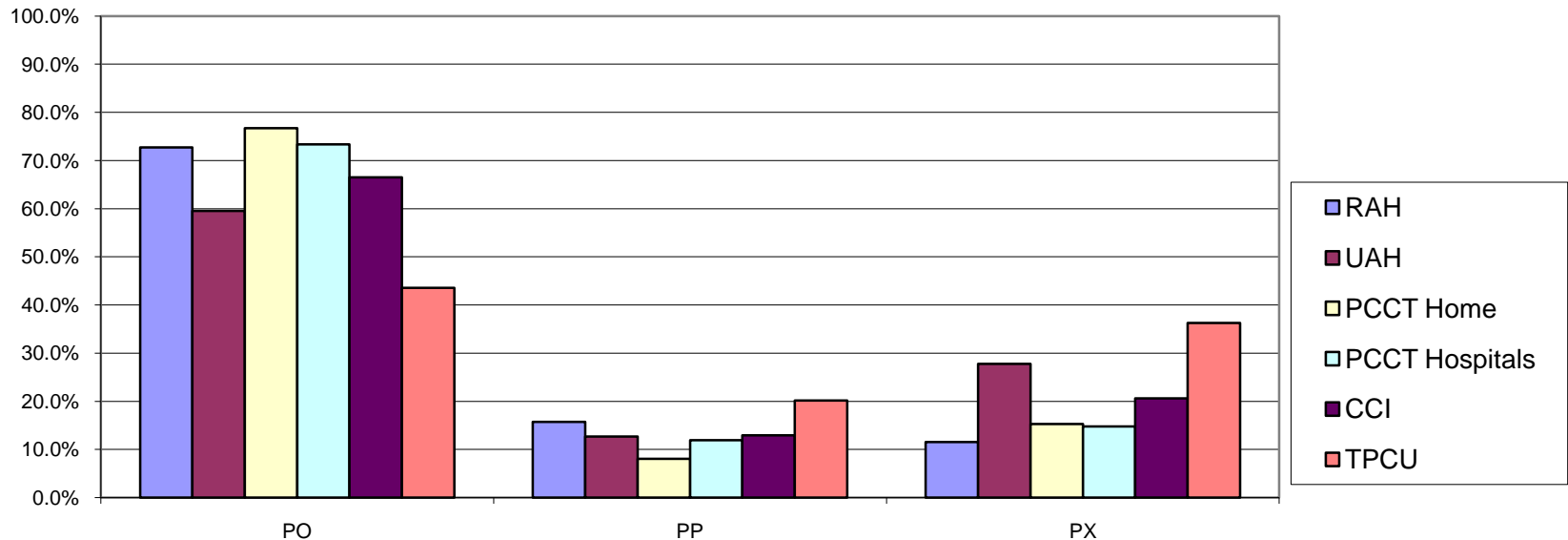
2013/2014 Incident Pain



Edmonton Classification System for Cancer Pain_Psychological Distress

2013/2014	PO	PP	PX
RAH	72.7%	15.7%	11.5%
UAH	59.5%	12.7%	27.8%
PCCT Home	76.7%	8.1%	15.3%
PCCT Hospitals	73.3%	11.9%	14.8%
CCI	66.5%	12.9%	20.6%
TPCU	43.6%	20.2%	36.2%

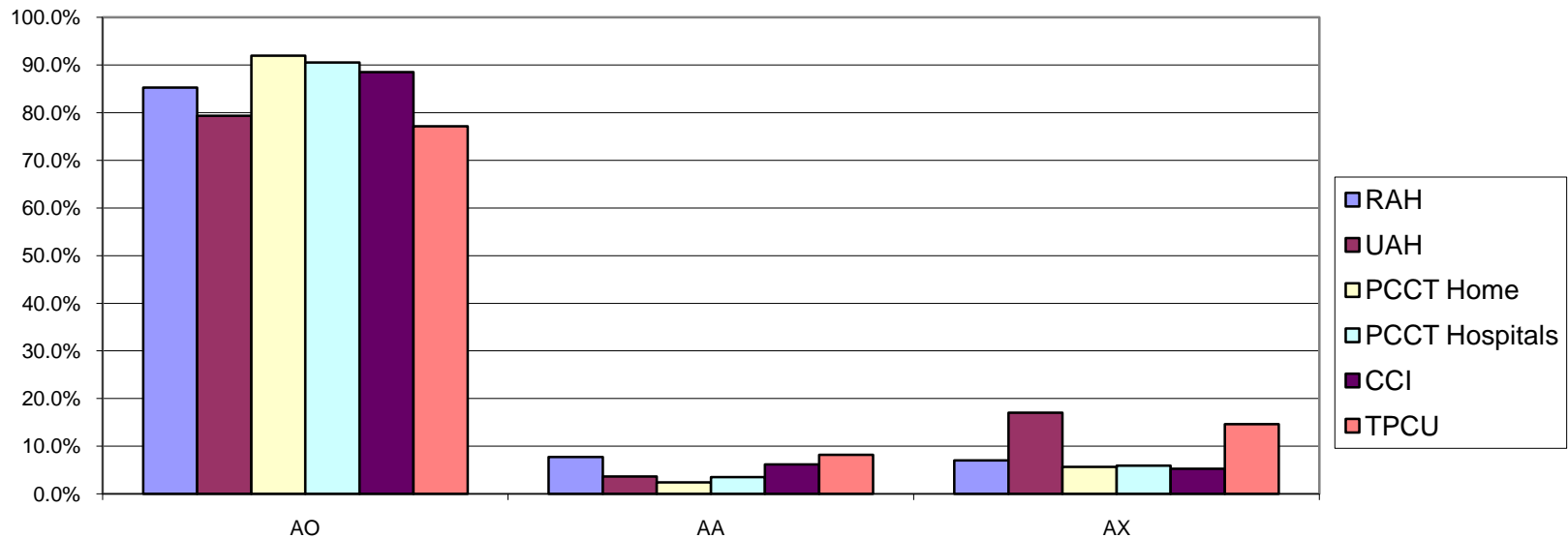
2013/2014 Psychological Distress



Edmonton Classification System for Cancer Pain_Addictive Behavior

2013/2014	AO	AA	AX
RAH	85.3%	7.7%	7.0%
UAH	79.3%	3.6%	17.0%
PCCT Home	92.0%	2.4%	5.7%
PCCT Hospitals	90.5%	3.5%	5.9%
CCI	88.5%	6.2%	5.3%
TPCU	77.2%	8.2%	14.6%

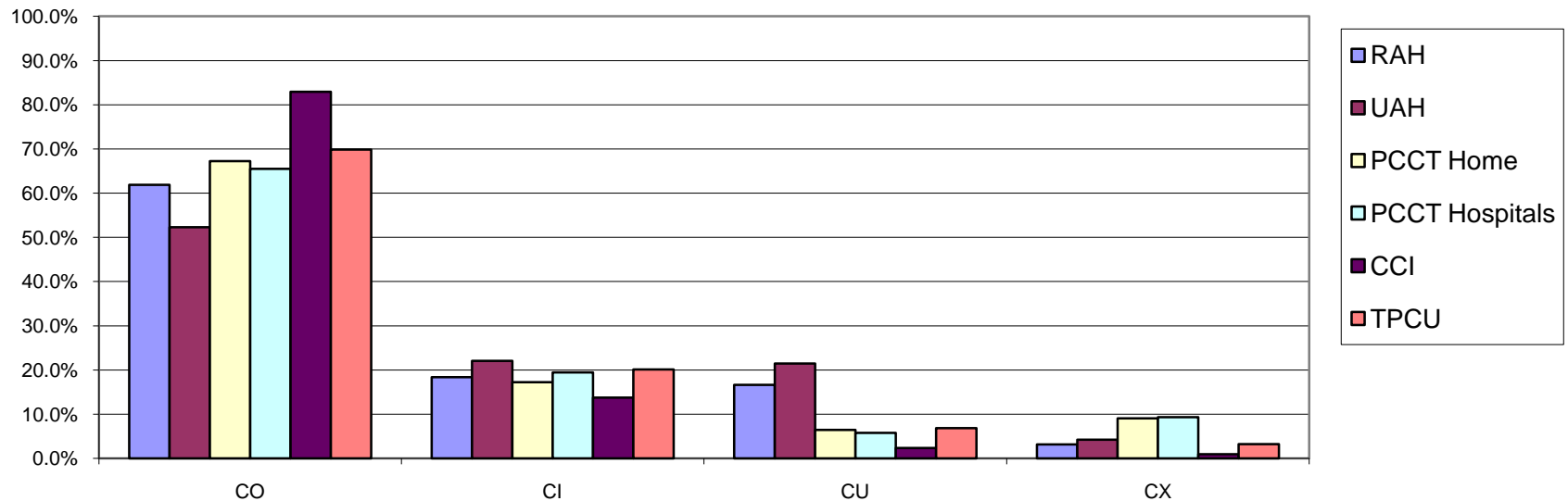
2013/2014 Addictive Behaviour



Edmonton Classification System for Cancer Pain_Cognitive Function

2013/2014	CO	CI	CU	CX
RAH	61.9%	18.4%	16.6%	3.1%
UAH	52.3%	22.1%	21.5%	4.2%
PCCT Home	67.3%	17.3%	6.4%	9.1%
PCCT Hospitals	65.5%	19.5%	5.8%	9.3%
CCI	82.9%	13.8%	2.4%	1.0%
TPCU	69.9%	20.1%	6.8%	3.2%

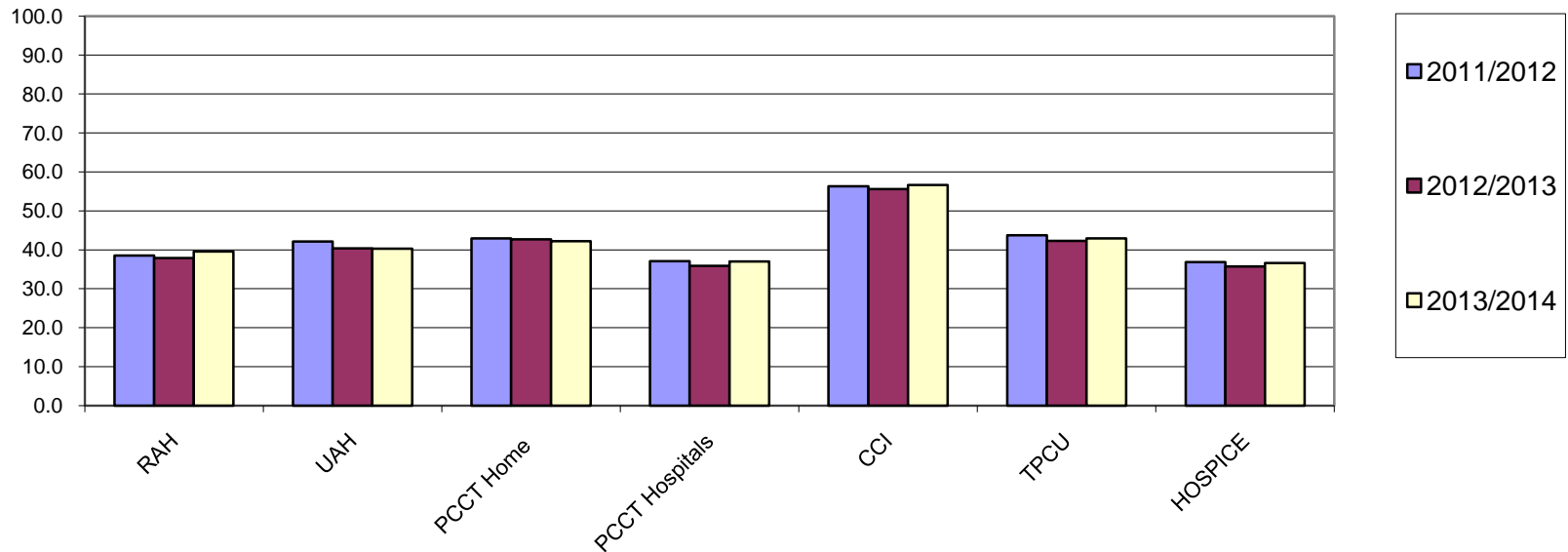
2013/2014 Cognitive Function



Initial Average PPS

	RAH	UAH	PCCT Home	PCCT Hospitals	CCI	TPCU	HOSPICE
2011/2012	38.5	42.1	42.9	37.1	56.3	43.7	36.8
2012/2013	37.9	40.4	42.7	35.9	55.6	42.3	35.7
2013/20134	39.6	39.9	42.2	37.0	56.6	42.9	36.6

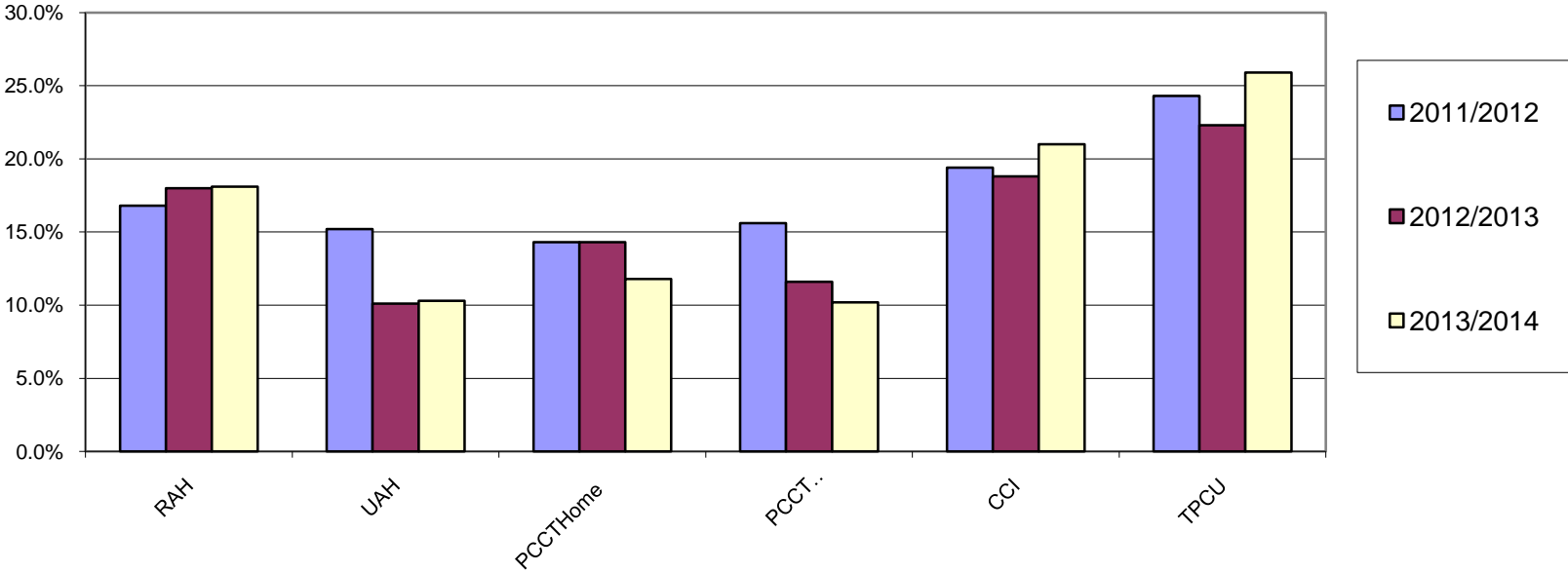
2011/2014 Initial Average PPS



CAGE 2 to 4

	RAH	UAH	PCCT Home	PCCT Hospitals	CCI	TPCU
2011/2012	16.8%	15.2%	14.3%	15.6%	19.4%	24.3%
2012/2013	18.0%	10.1%	14.3%	11.6%	18.8%	22.3%
2013/2014	18.1%	10.3%	11.8%	10.2%	21.0%	25.9%

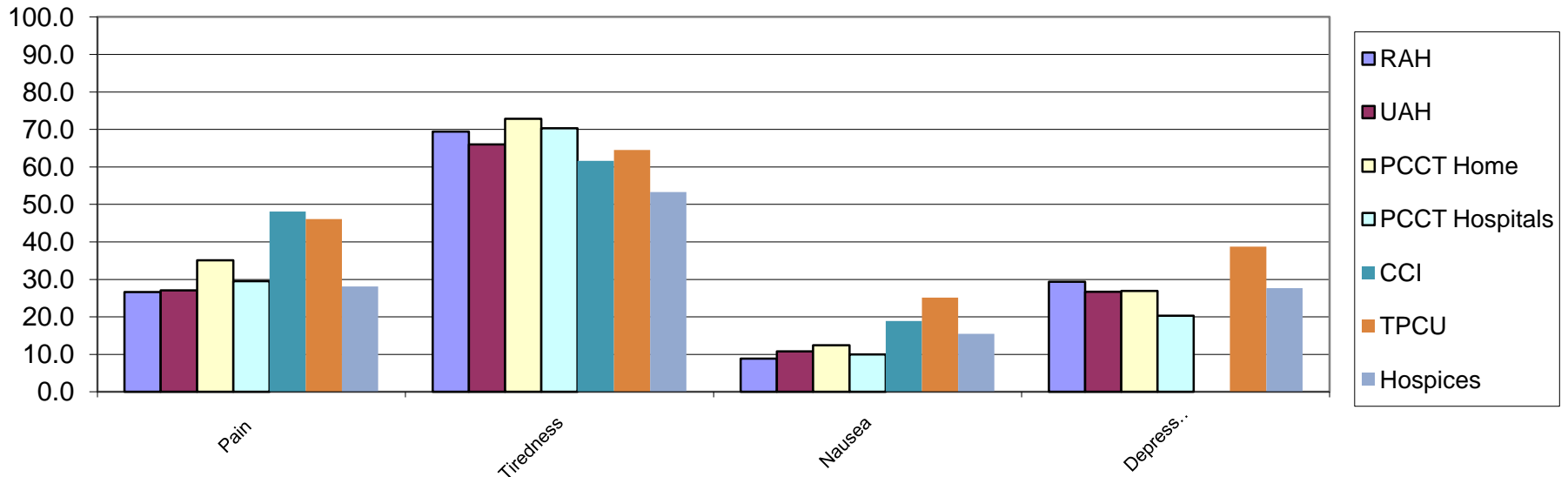
2011/2014 CAGE 2 to 4



2013/2014 First Average ESAS

	Pain	Tiredness	Nausea	Depression
RAH	26.6	69.4	8.9	29.4
UAH	26.7	65.7	10.5	26.7
PCCT Home	35.1	72.8	12.4	26.9
PCCT Hospitals	29.5	70.3	10.0	20.3
CCI	48.1	61.6	18.9	34.8
TPCU	46.1	64.5	25.1	38.7
Hospices	28.1	53.3	15.5	27.7

2013/2014 First Average ESAS

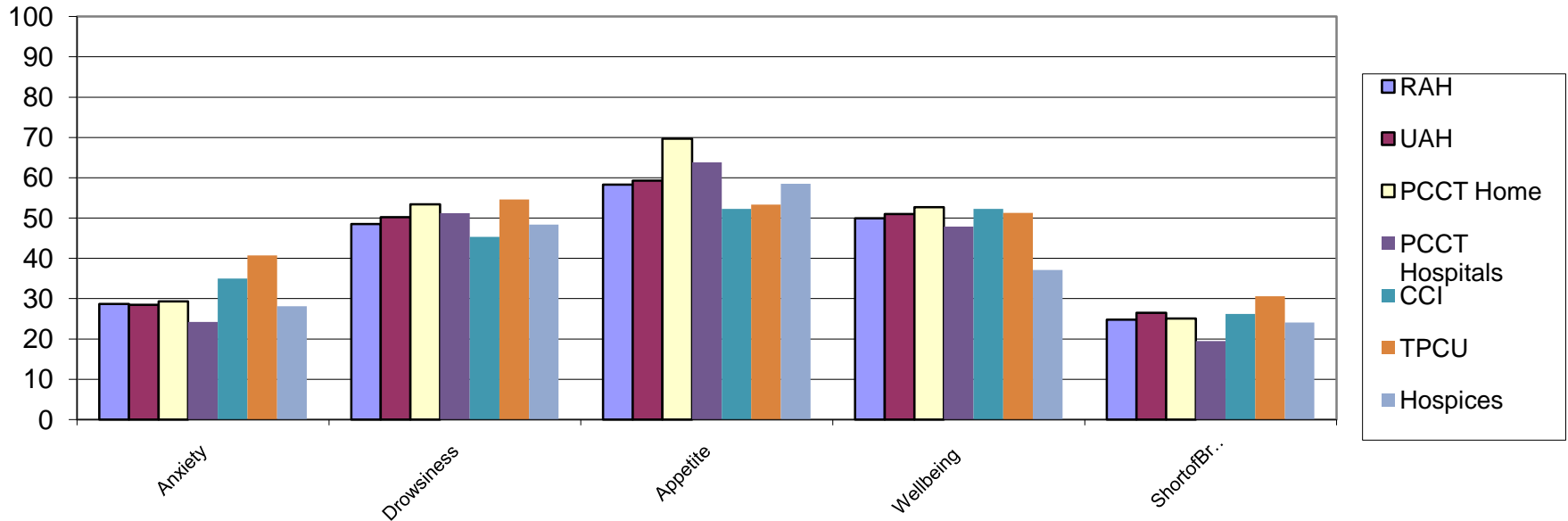


2013/2014 First Average ESAS_

cont'd

	Anxiety	Drowsiness	Appetite	Wellbeing	ShortofBreath
RAH	28.7	48.5	58.3	49.9	24.8
UAH	28.5	50.2	59.3	51.0	26.5
PCCT Home	29.3	53.4	69.7	52.7	25.1
PCCT Hospitals	24.2	51.2	63.8	47.9	19.5
CCI	35	45.3	52.3	52.3	26.2
TPCU	40.7	54.6	53.3	51.3	30.6
Hospices	28.1	48.4	58.5	37.1	24.1

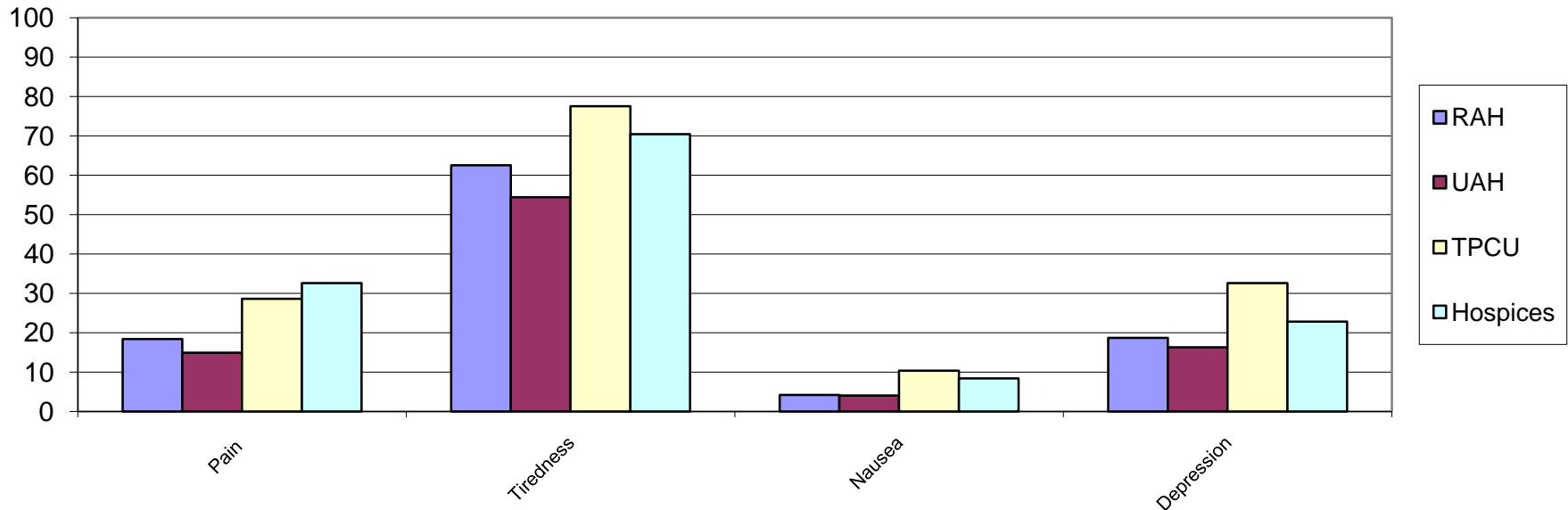
2013/2014 First Average ESAS



2013/2014 Last Average ESAS

	Pain	Tiredness	Nausea	Depression
RAH	18.4	62.5	4.2	18.7
UAH	14.9	54.4	4.0	16.3
TPCU	28.6	77.5	10.3	32.6
Hospices	32.6	70.4	8.4	22.8

2013/2014 Last Average ESAS

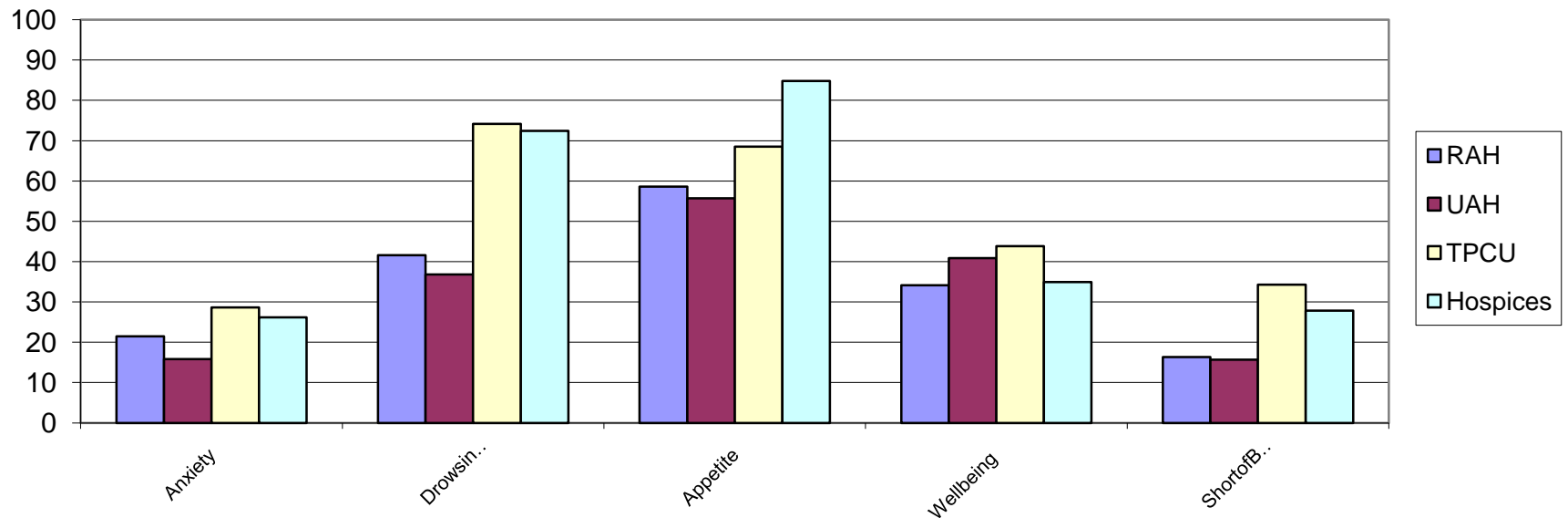


2013/2014 Last Average ESAS

cont'd

	Anxiety	Drowsiness	Appetite	Wellbeing	ShortofBreath
RAH	21.5	41.6	58.6	34.1	16.3
UAH	15.8	36.8	55.7	40.9	15.7
TPCU	28.6	74.2	68.5	43.8	34.3
Hospices	26.2	72.4	84.8	34.9	27.8

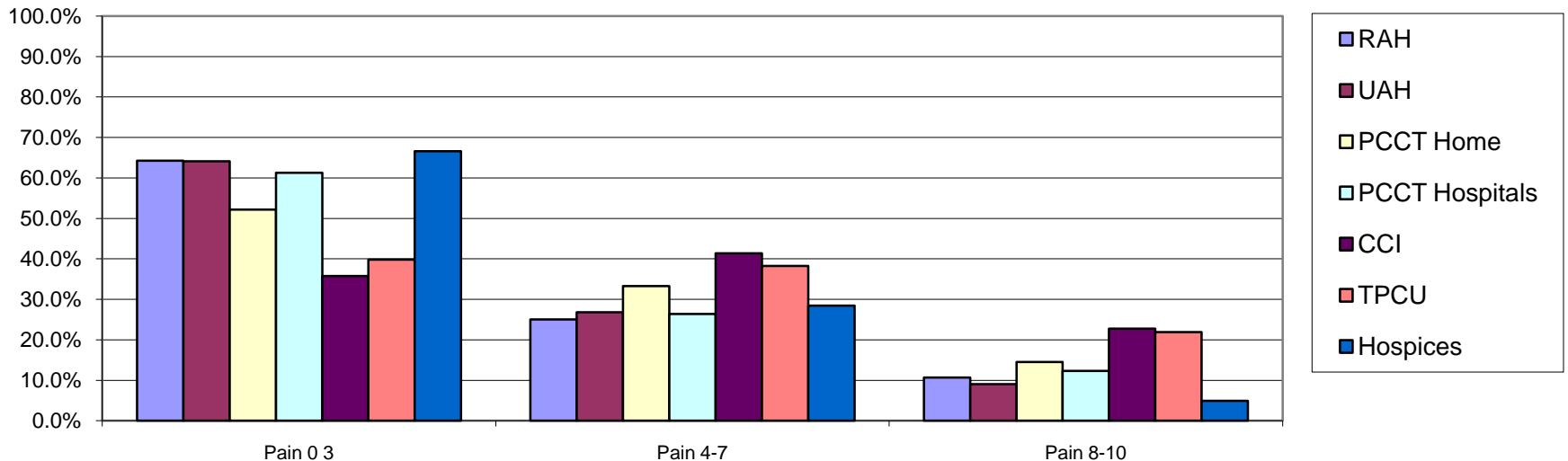
2013/2014 Last Average ESAS



2013/2014 First ESAS Pain Groupings

	Pain 0-3	Pain 4-7	Pain 8-10
RAH	64.3%	25.0%	10.7%
UAH	64.1%	26.8%	9.1%
PCCT Home	52.2%	33.3%	14.5%
PCCT Hospitals	61.2%	26.4%	12.3%
CCI	35.8%	41.4%	22.8%
TPCU	39.8%	38.3%	21.9%
Hospices	66.6%	28.4%	5.0%

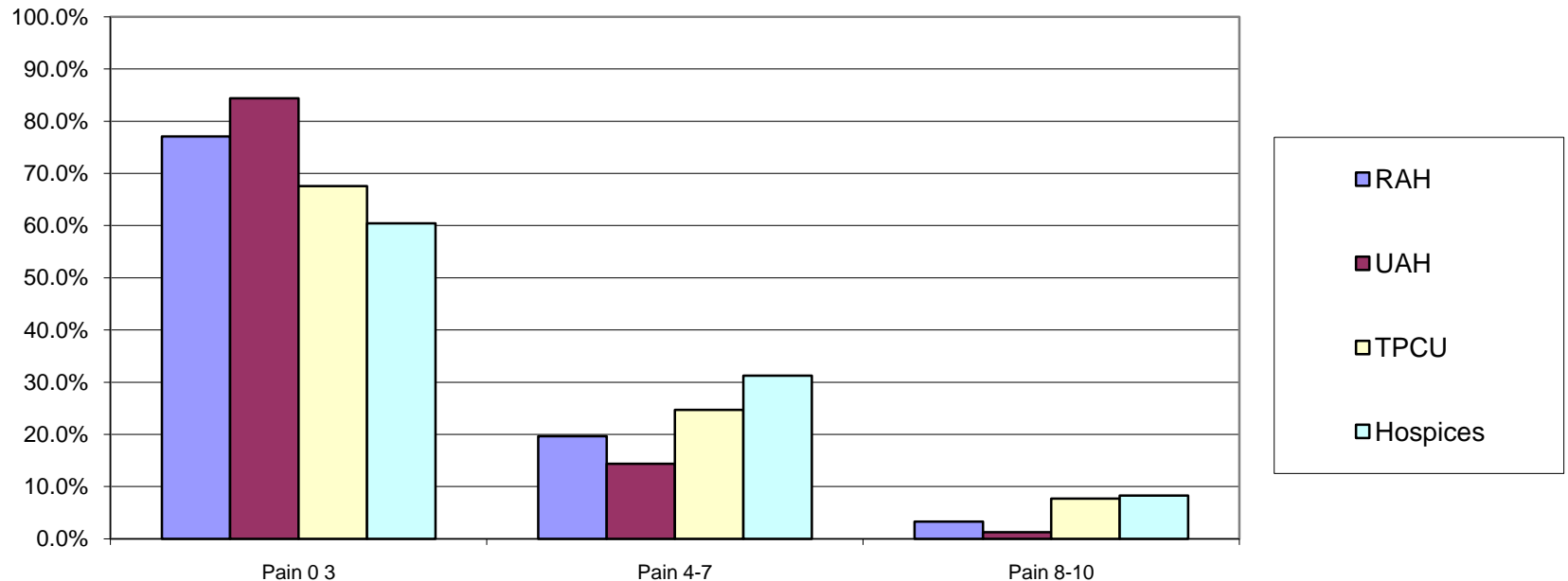
2013/2014 First ESAS Pain Groupings



2013/2014 Last ESAS Pain Groupings

	Pain 0 3	Pain 4-7	Pain 8-10
RAH	77.1%	19.6%	3.3%
UAH	84.4%	14.4%	1.3%
TPCU	67.6%	24.7%	7.7%
Hospices	60.4%	31.3%	8.3%

2013/2014 Last ESAS Pain Groupings



2013/2014 Goals of Care RMC Coding

	RAH Initial	UAH Initial	RAH Final	UAH final	Total	Total %
R1	72	33	0	0	105	9.0%
R2	6	4	0	0	10	0.9%
R3	9	10	2	1	22	1.9%
M1	308	136	7	4	455	38.9%
M2	24	18	0	5	47	4.0%
C1	139	117	55	28	339	29.0%
C2	102	56	19	15	192	16.4%
Total	660	374	83	53	1170	100.0%

2013/2014 Goals of Care RMC Coding & Discharge Locations

	Home	Deceased	TPCU	Hospice PCU	Other	Total
R1	18.6%	4.8%	0.0%	0.0%	13.9%	8.7%
R2	1.6%	0.3%	0.0%	0.0%	0.5%	0.6%
R3	2.7%	0.3%	3.8%	0.0%	2.6%	1.5%
M1	60.1%	24.3%	64.2%	2.4%	49.0%	35.4%
M2	6.6%	3.8%	1.9%	1.9%	3.6%	4.0%
C1	8.9%	31.0%	20.8%	72.2%	20.6%	31.5%
C2	1.6%	35.5%	9.4%	23.6%	9.8%	18.3%
Total	100.0%	100.0%	100.0%	100.0%	100.0%	100.0%



Edmonton Zone Palliative Care Program

- PATIENTS AND CAREGIVERS
- VOLUNTEERS
- HEALTH CARE PROFESSIONALS
- EDUCATION AND TRAINING
- RESEARCH



Welcome to the EZPCP

Here at the Edmonton Zone Palliative Care Program we strive for excellence in palliative care.

[View more information about the Edmonton Zone Palliative Care Program.](#)

What is Palliative Care

Palliative care is the special care of a person whose disease cannot be cured.

Palliative care provides comfort and support to the person and family.

[Learn more about palliative care.](#)

Palliative Care Services

The Edmonton Zone Palliative Care Program offers palliative care in a number of different forms.

[Read more about the palliative care services offered by the EZPCP.](#)

Hot issues for 2014/2015

- Preferences for Location of care and location of death
- Comfort care beds and 2030 plan
- New Hospice PCU locations – Stony Plain, St Albert, other?
- Triage process with expanded Hospice PCU locations
- Admin support and new program council structure
- Workforce planning for clinical teams
- Evolving role of the Palliative Institute and the Provincial P & EOL care initiatives