

RPCP Cross Site Report

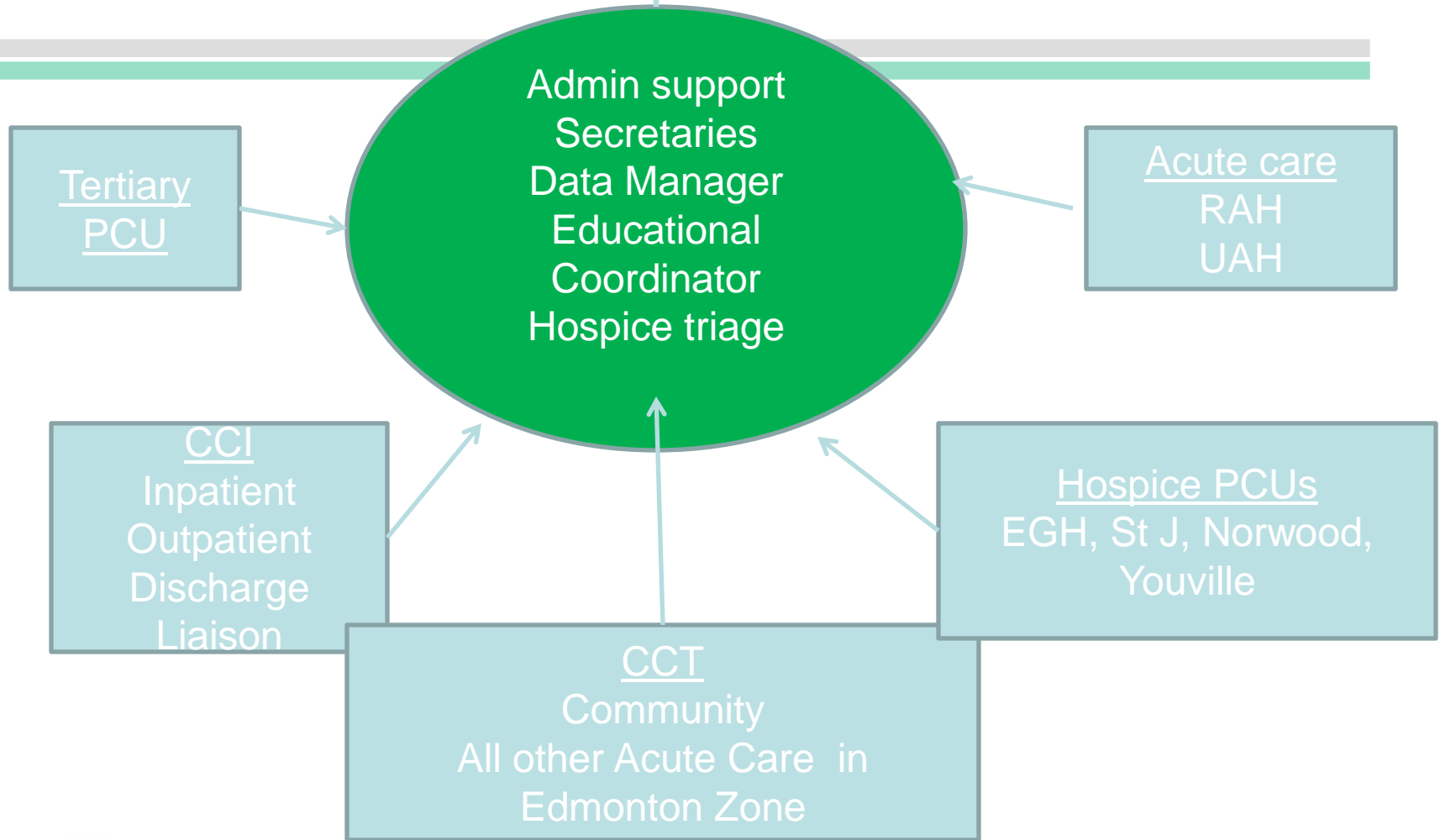
Annual General Meeting
May 30-31, 2012
Presented by Robin Fainsinger

Zone PC Program



Program Manager
Edmonton Zone
PC Program

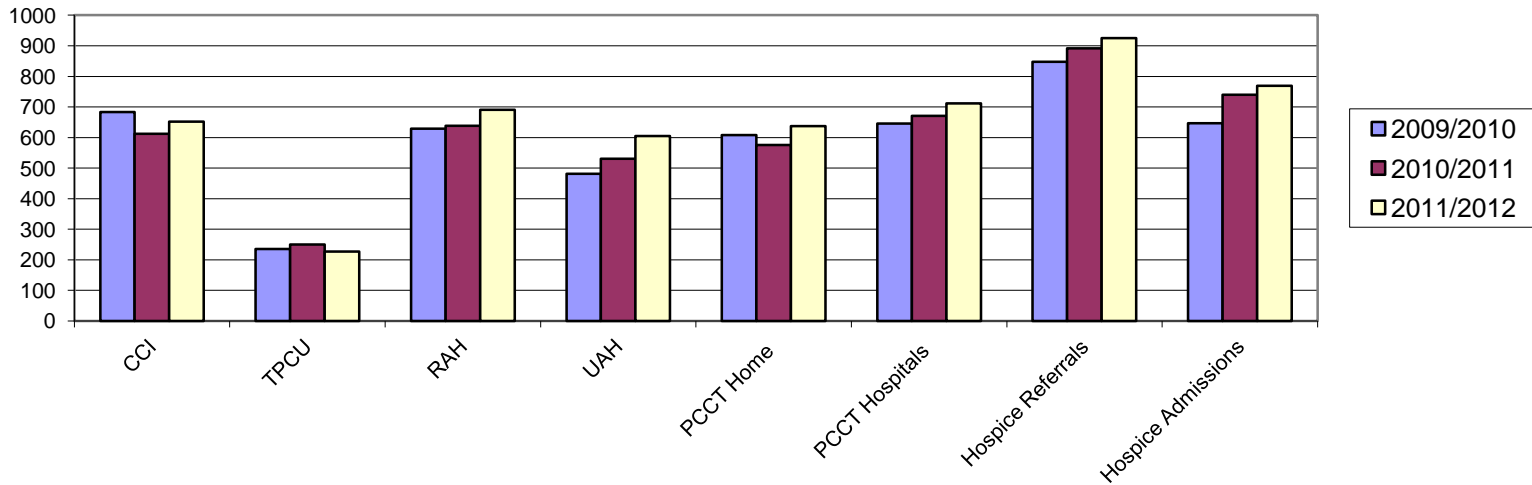
Section Chief
Edmonton Zone
PC Program



RPCP Services : Consults/Discharges

	CCI	TPCU	RAH	UAH	PCCT Home	PCCT Hospitals	Hospice Referrals	Hospice Admissions
2009/2010	683	235	629	481	608	646	848	647
2010/2011	612	250	638	531	576	671	892	740
2011/2012	652	227	691	605	637	712	925	769

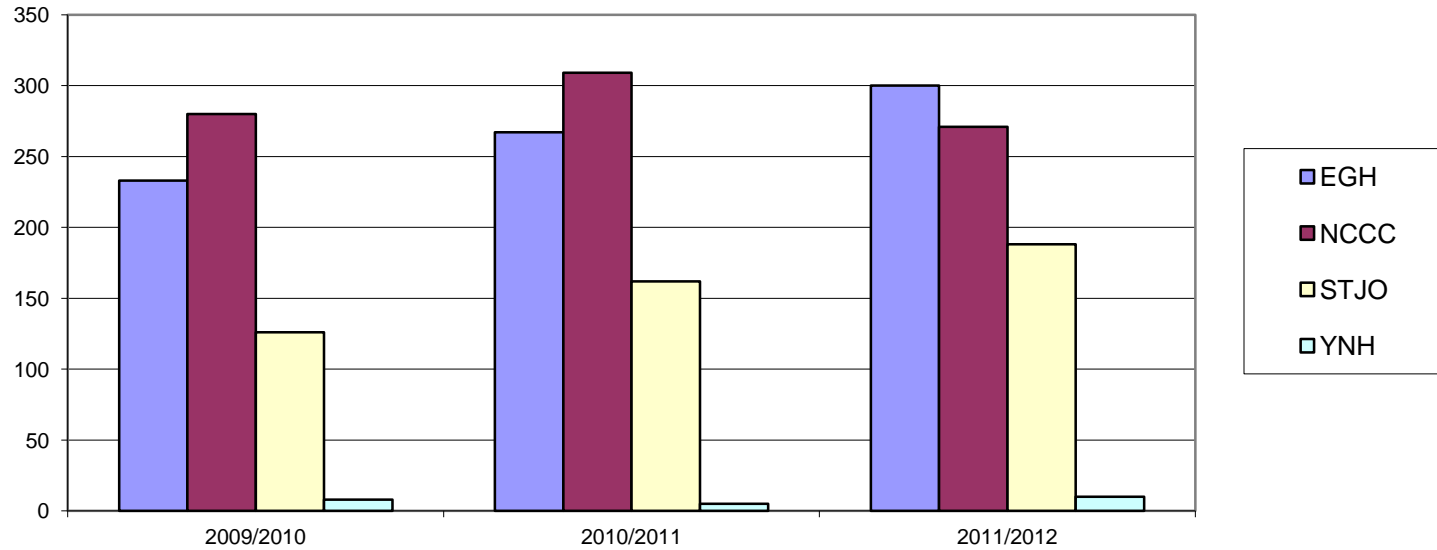
2009/2012 Palliative Care Consults/ Discharges



2009/2012 Hospice Admissions

	2009/2010	2010/2011	2011/2012
EGH	233	267	300
NCCC	280	309	271
STJO	126	162	188
YNH	8	5	10
TOTAL	647	743	769

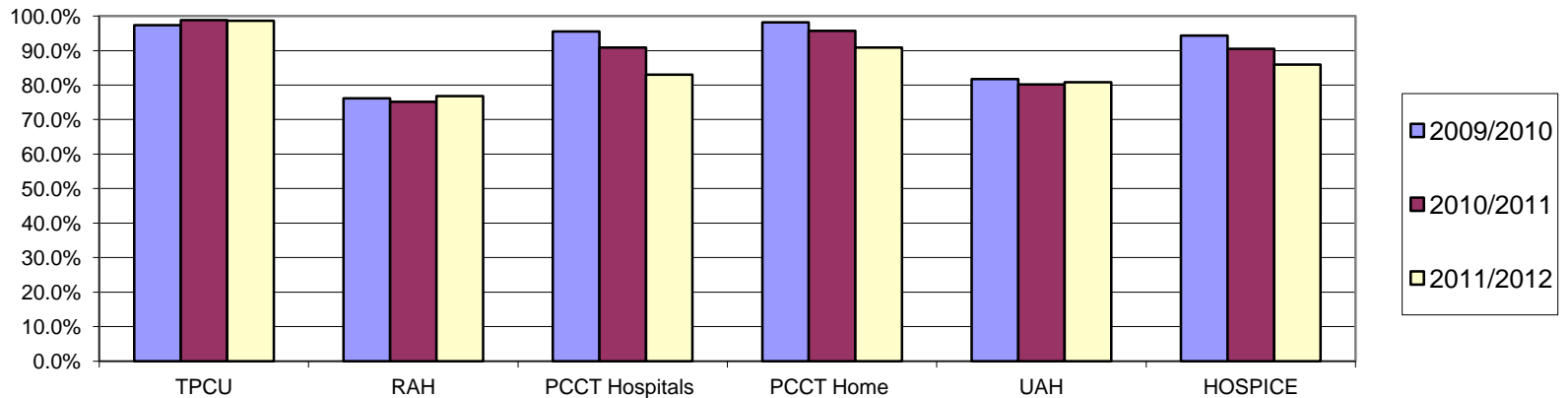
2009/2012 Hospice Admissions



Cancer Diagnosis

	TPCU	RAH	PCCT Hospitals	PCCT Home	UAH	HOSPICE
2009/2010	97.4%	76.2%	95.5%	98.2%	81.7%	94.3%
2010/2011	98.8%	75.2%	90.9%	95.7%	80.2%	90.5%
2011/2012	98.7%	76.8%	83.0%	90.9%	80.8%	86.0%

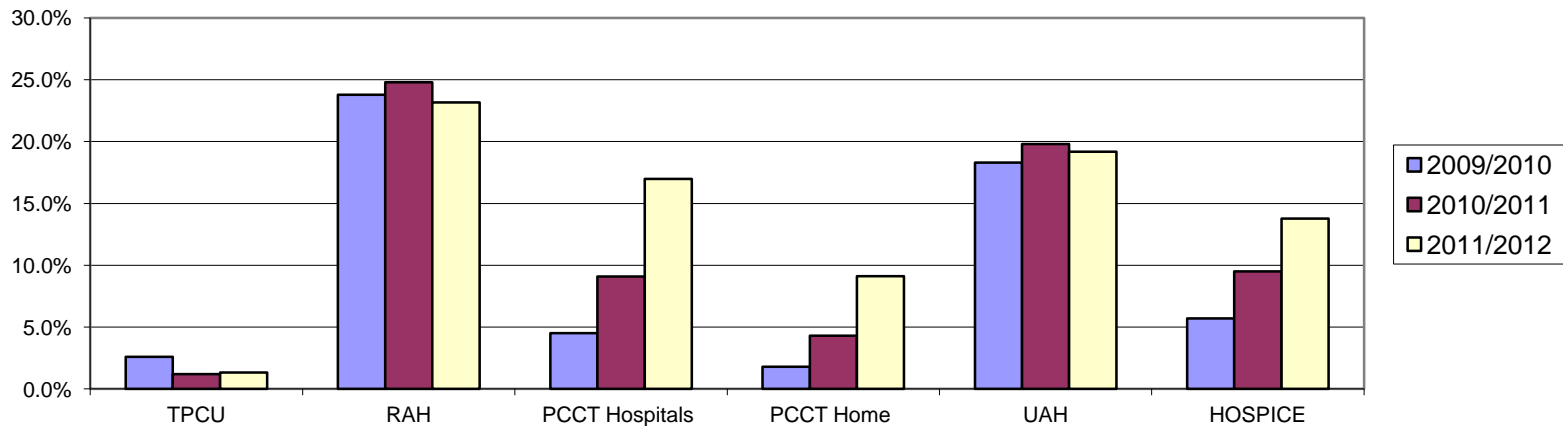
2009/2012 Cancer Diagnosis



Non Cancer Diagnosis

	TPCU	RAH	PCCT Hospitals	PCCT Home	UAH	HOSPICE
2009/2010	2.6%	23.8%	4.5%	1.8%	18.3%	5.7%
2010/2011	1.2%	24.8%	9.1%	4.3%	19.8%	9.5%
2011/2012	1.3%	23.2%	17.0%	9.1%	19.2%	13.8%

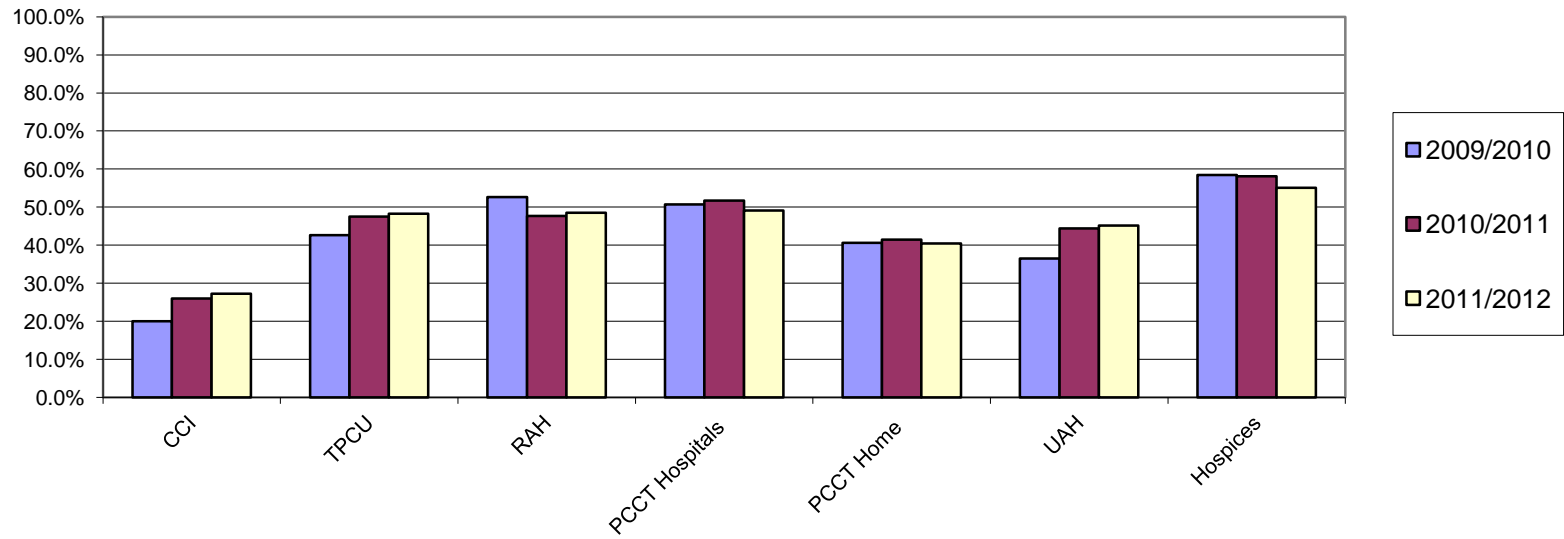
2009/2012 Non Cancer Diagnosis



Initial % MMSE LESS Than Expected MMSE

	CCI	TPCU	RAH	PCCT Hospitals	PCCT Home	UAH	Hospices
2009/2010	20.0%	42.6%	52.6%	50.7%	40.6%	36.5%	58.5%
2010/2011	26.0%	47.5%	47.7%	51.7%	41.4%	44.4%	58.1%
2011/2012	27.2%	48.3%	48.5%	49.1%	40.4%	45.1%	55.1%

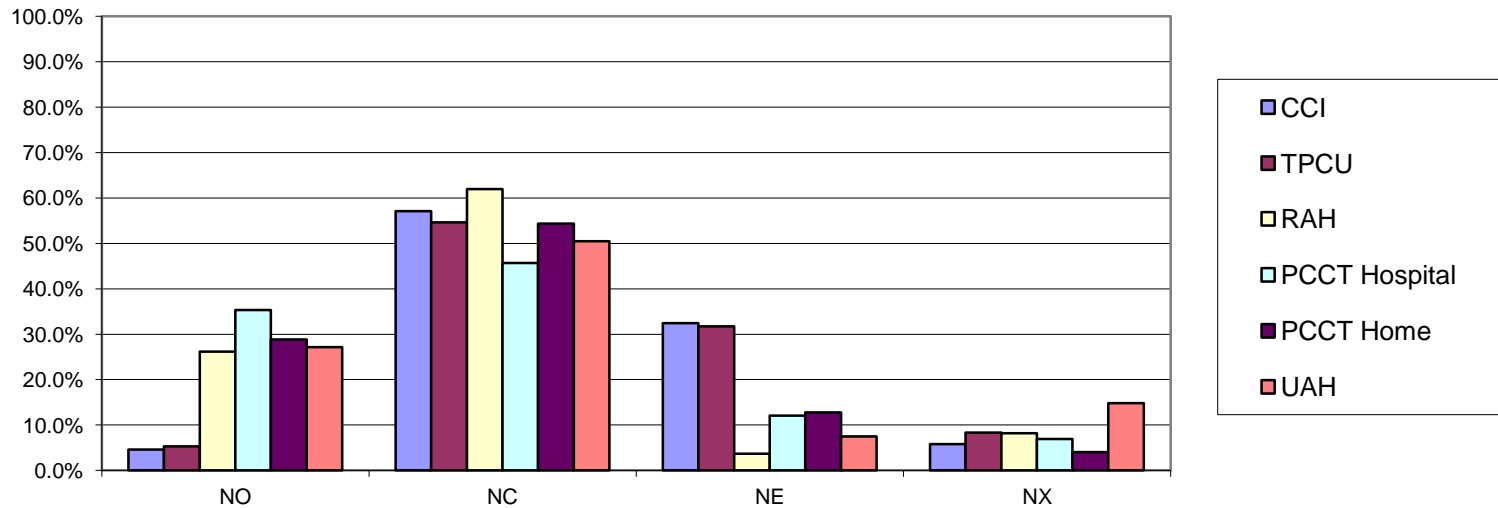
2009/2012 Initial MMSE < Expected MMSE



Edmonton Classification System for Cancer Pain_Mechanism Pain

2011/2012	NO	NC	NE	NX
CCI	4.6%	57.1%	32.5%	5.8%
TPCU	5.3%	54.6%	31.7%	8.4%
RAH	26.2%	62.0%	3.7%	8.2%
PCCT Hospital	35.3%	45.7%	12.0%	6.9%
PCCT Home	28.8%	54.4%	12.8%	4.0%
UAH	27.2%	50.5%	7.5%	14.8%

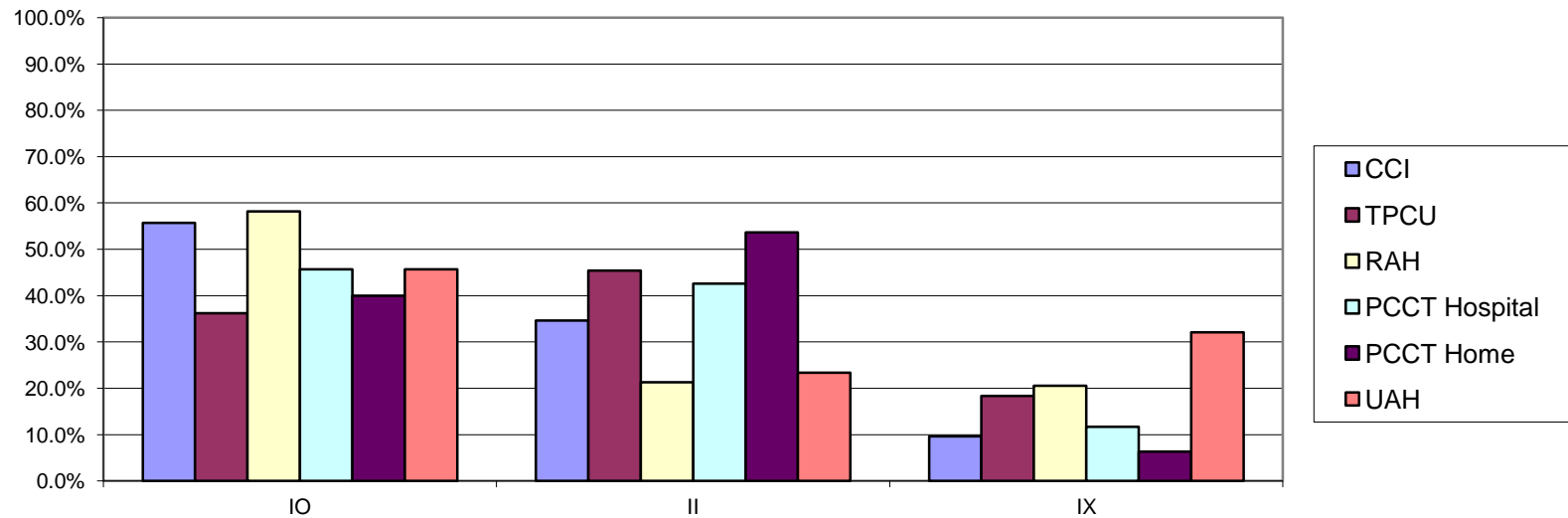
2011/2012 Mechanism Pain



Edmonton Classification System for Cancer Pain_Incident Pain

2011/2012	IO	II	IX
CCI	55.7%	34.6%	9.6%
TPCU	36.2%	45.4%	18.3%
RAH	58.1%	21.3%	20.5%
PCCT Hospital	45.7%	42.6%	11.7%
PCCT Home	40.0%	53.7%	6.3%
UAH	45.7%	23.3%	32.1%

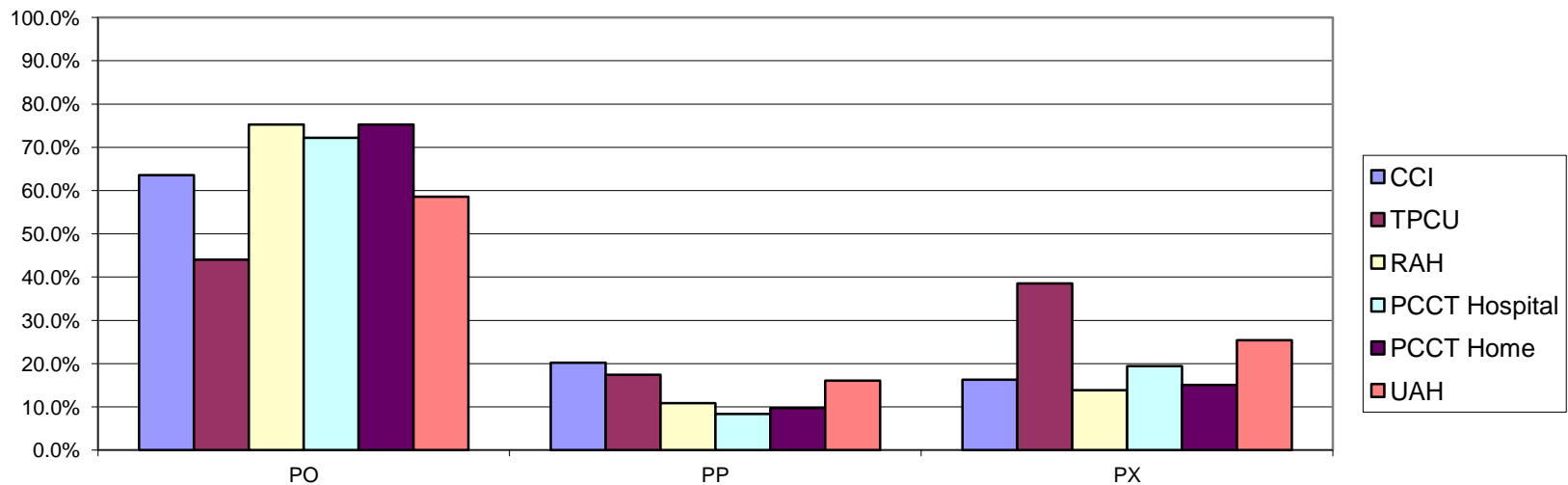
2011/2012 Incident Pain



Edmonton Classification System for Cancer Pain_Psychological Distress

2011/2012	PO	PP	PX
CCI	63.6%	20.2%	16.3%
TPCU	44.0%	17.4%	38.5%
RAH	75.3%	10.9%	13.9%
PCCT Hospital	72.2%	8.3%	19.4%
PCCT Home	75.3%	9.7%	15.1%
UAH	58.6%	16.0%	25.4%

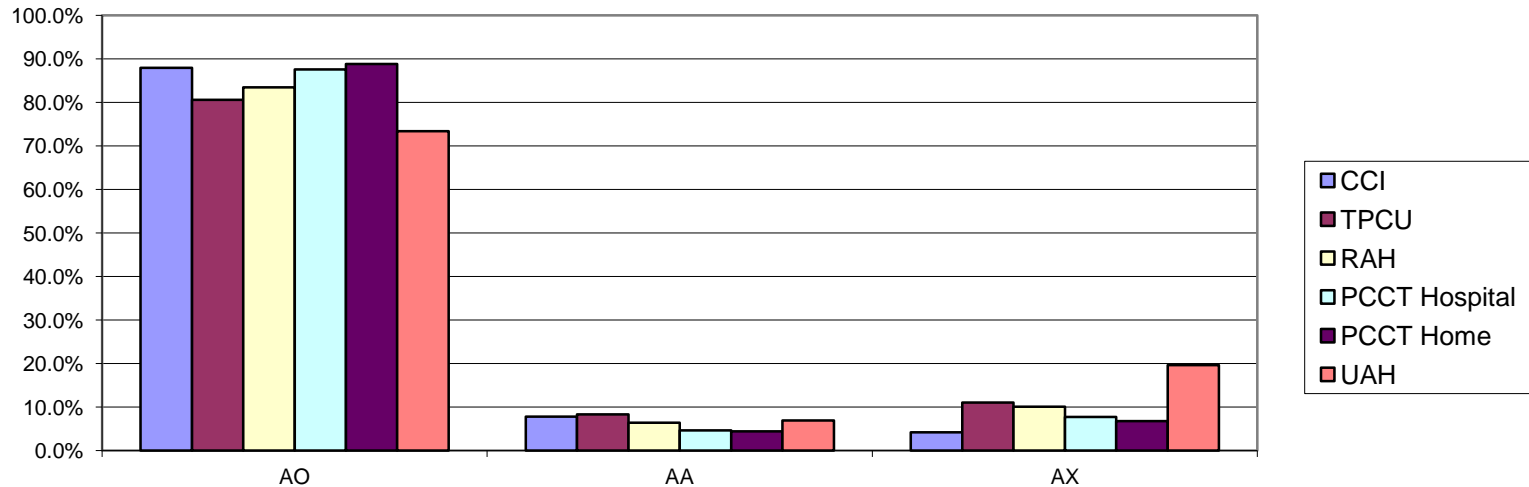
2011/2012 Psychological Distress



Edmonton Classification System for Cancer Pain_Addictive Behavior

2011/2012	AO	AA	AX
CCI	88.0%	7.8%	4.2%
TPCU	80.6%	8.3%	11.1%
RAH	83.5%	6.4%	10.1%
PCCT Hospital	87.6%	4.6%	7.7%
PCCT Home	88.8%	4.4%	6.8%
UAH	73.4%	6.9%	19.7%

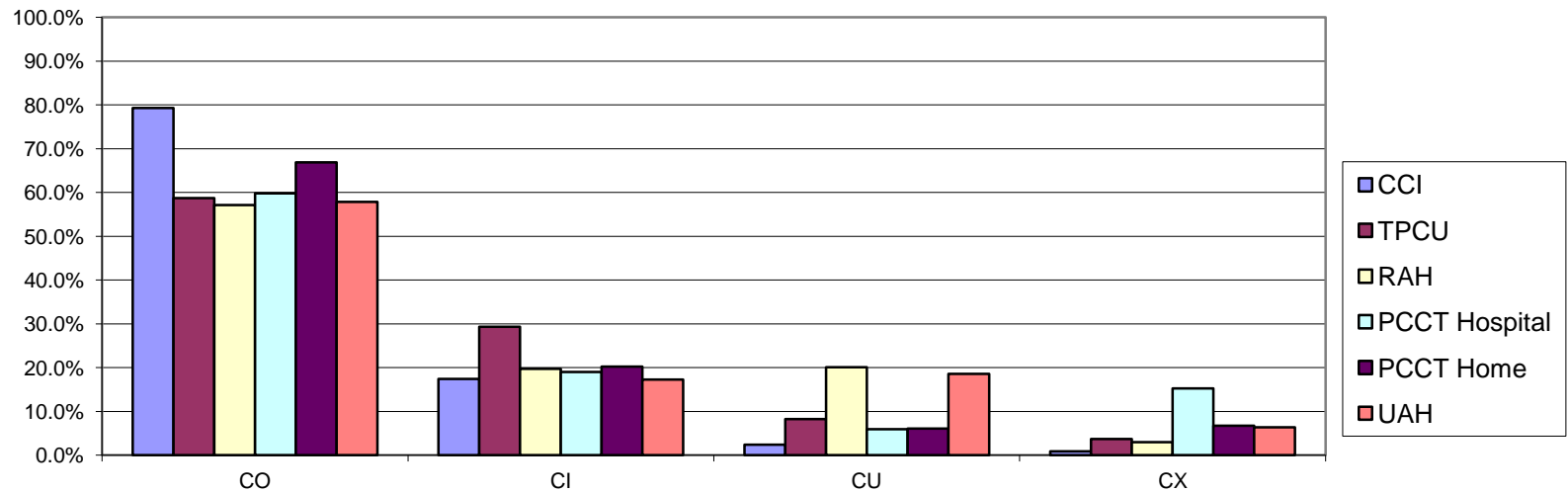
2011/2012 Addictive Behaviour



Edmonton Classification System for Cancer Pain_Cognitive Function

2011/2012	CO	CI	CU	CX
CCI	79.3%	17.4%	2.4%	0.9%
TPCU	58.7%	29.4%	8.3%	3.7%
RAH	57.1%	19.7%	20.1%	3.0%
PCCT Hospital	59.8%	19.0%	5.9%	15.3%
PCCT Home	66.9%	20.3%	6.1%	6.8%
UAH	57.8%	17.2%	18.6%	6.4%

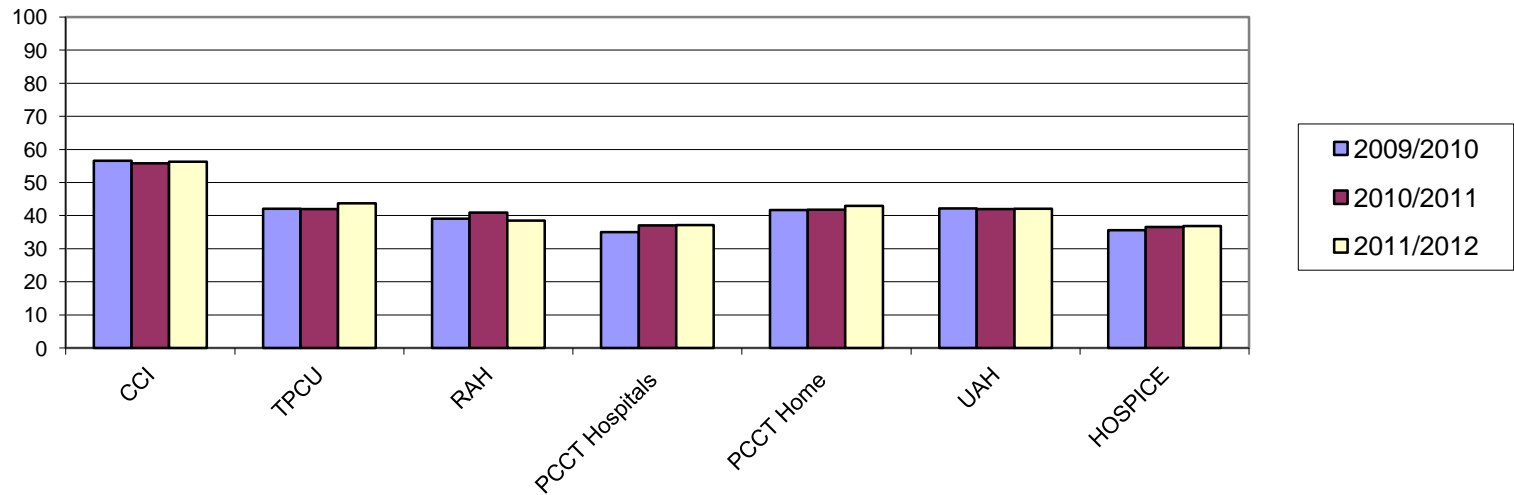
2011/2012 Cognitive Function



Initial Average PPS

	CCI	TPCU	RAH	PCCT Hospitals	PCCT Home	UAH	HOSPICE
2009/2010	56.6	42.1	39.1	35	41.7	42.2	35.6
2010/2011	55.8	42.0	40.9	37.0	41.8	42.0	36.6
2011/2012	56.3	43.7	38.5	37.1	42.9	42.1	36.8

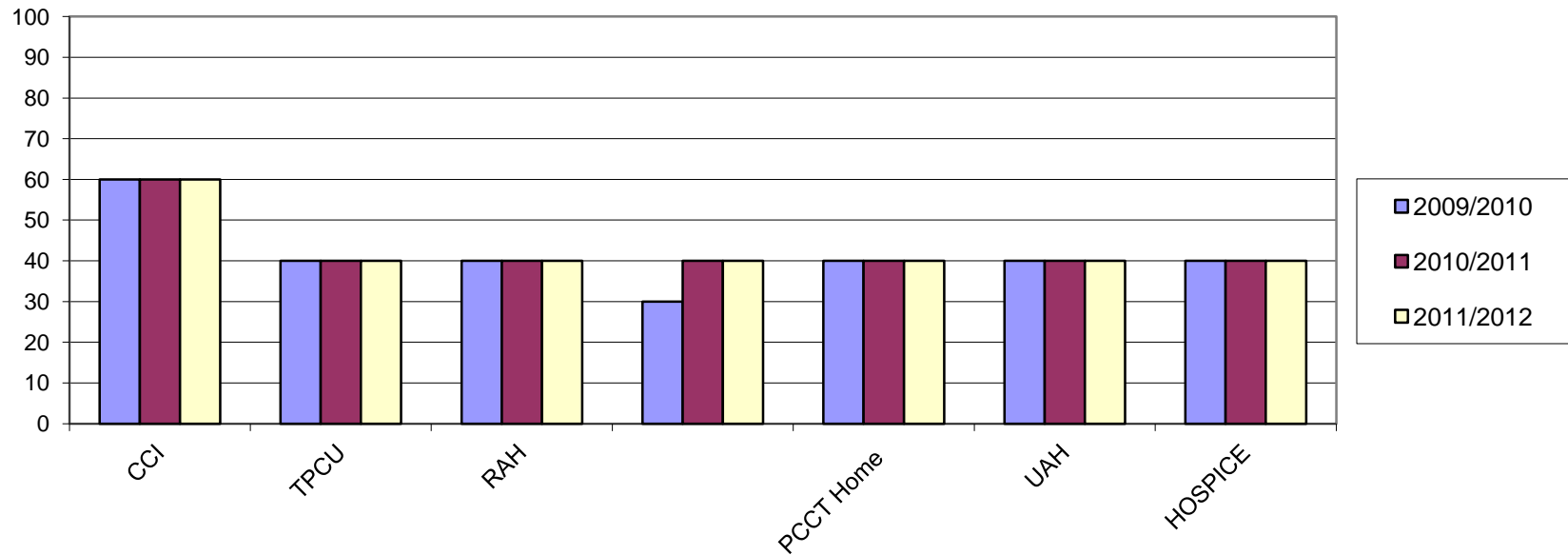
2009/2012 Initial Average PPS



Initial Median PPS

	CCI	TPCU	RAH	PCCT Hospitals	PCCT Home	UAH	HOSPICE
2009/2010	60	40	40	30	40	40	40
2010/2011	60	40	40	40	40	40	40
2011/2012	60	40	40	40	40	40	40

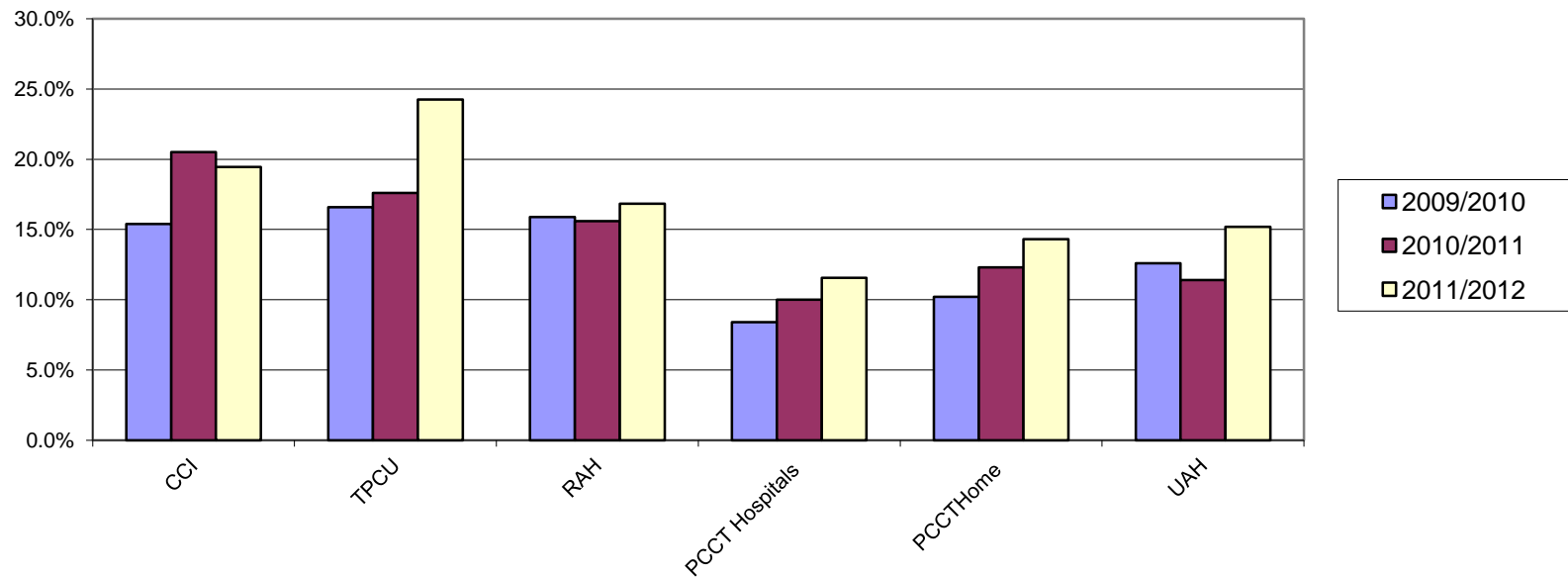
2009/2012 Initial Median PPS



CAGE 2 to 4

	CCI	TPCU	RAH	PCCT Hospitals	PCCTHome	UAH
2009/2010	15.4%	16.6%	15.9%	8.4%	10.20%	12.6%
2010/2011	20.5%	17.6%	15.6%	10.0%	12.30%	11.4%
2011/2012	19.4%	24.3%	16.8%	11.6%	14.3%	15.2%

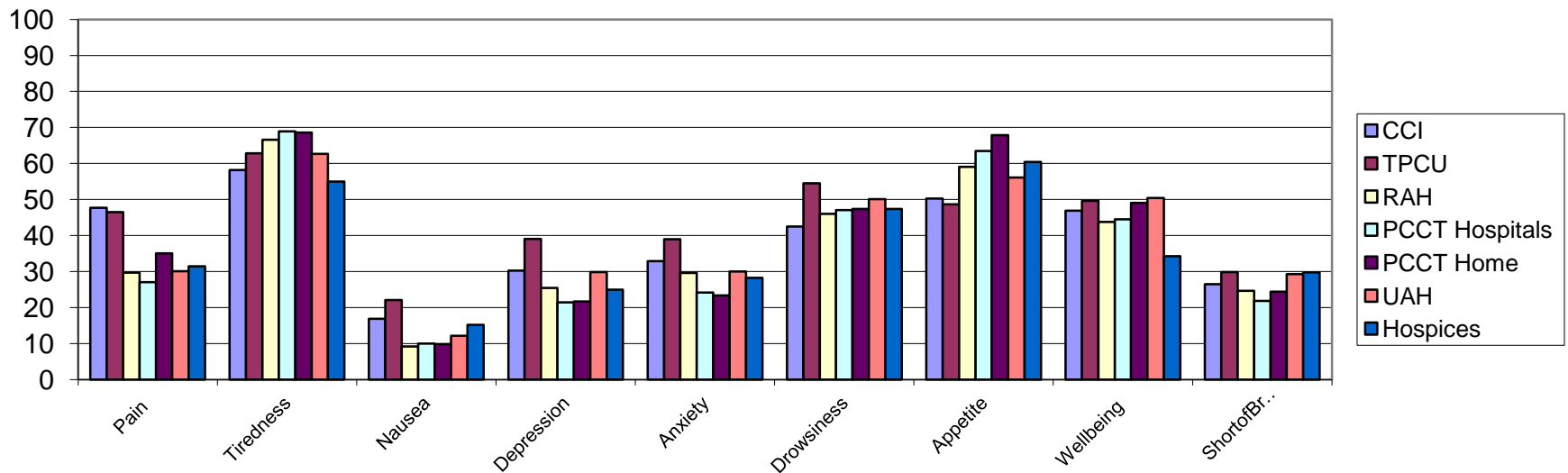
2009/2012 CAGE 2 to 4



2011/2012 First Average ESAS

	Pain	Tiredness	Nausea	Depression	Anxiety	Drowsiness	Appetite	Wellbeing	ShortofBreath
CCI	47.7	58.2	16.9	30.3	32.9	42.5	50.3	46.9	26.5
TPCU	46.5	62.8	22.1	39.1	39.0	54.5	48.7	49.6	29.9
RAH	29.7	66.6	9.2	25.5	29.6	46	59.1	43.8	24.7
PCCT Hospitals	27.1	68.9	10.0	21.5	24.2	47.1	63.5	44.5	21.9
PCCT Home	35.1	68.6	9.9	21.7	23.4	47.4	67.9	49.1	24.4
UAH	30.1	62.7	12.2	29.9	30.0	50.1	56.1	50.4	29.3
Hospices	31.5	55.0	15.2	25.0	28.3	47.4	60.4	34.3	29.8

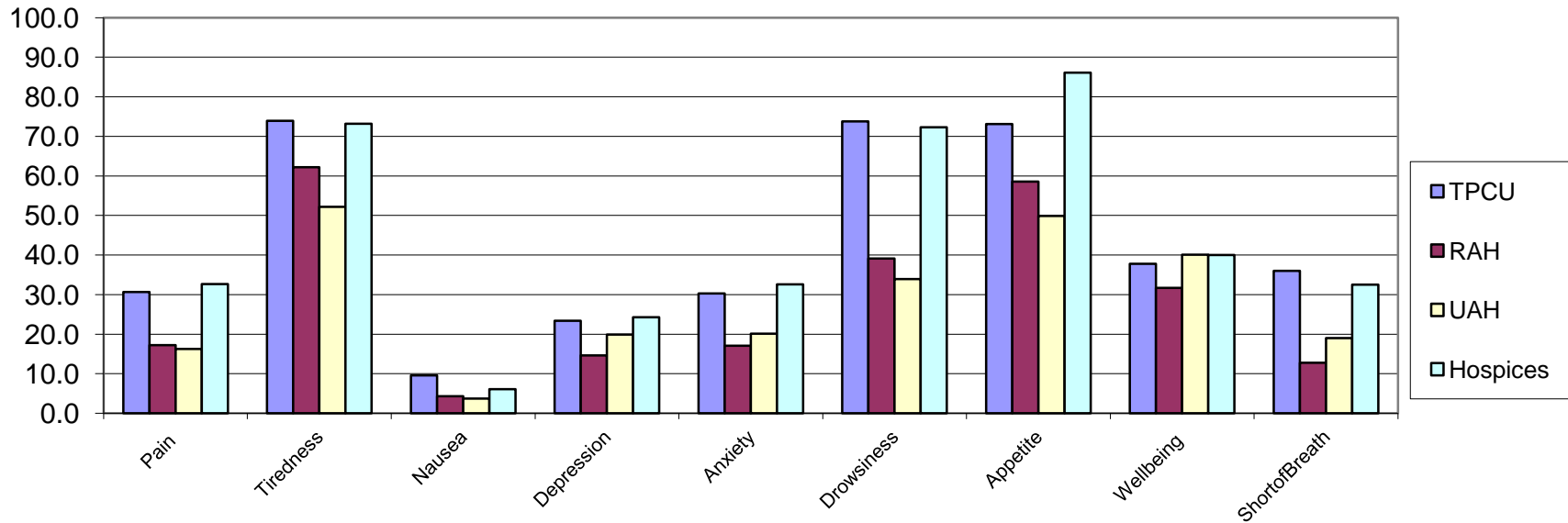
2011/2012 First Average ESAS



2011/2012 Last Average ESAS

	Pain	Tiredness	Nausea	Depression	Anxiety	Drowsiness	Appetite	Wellbeing	ShortofBreath
TPCU	30.7	73.9	9.6	23.4	30.3	73.8	73.1	37.8	36.0
RAH	17.2	62.2	4.3	14.6	17.1	39.1	58.6	31.7	12.8
UAH	16.3	52.2	3.7	19.9	20.1	33.9	49.9	40.1	19.0
Hospices	32.7	73.2	6.1	24.3	32.6	72.3	86.1	40.0	32.5

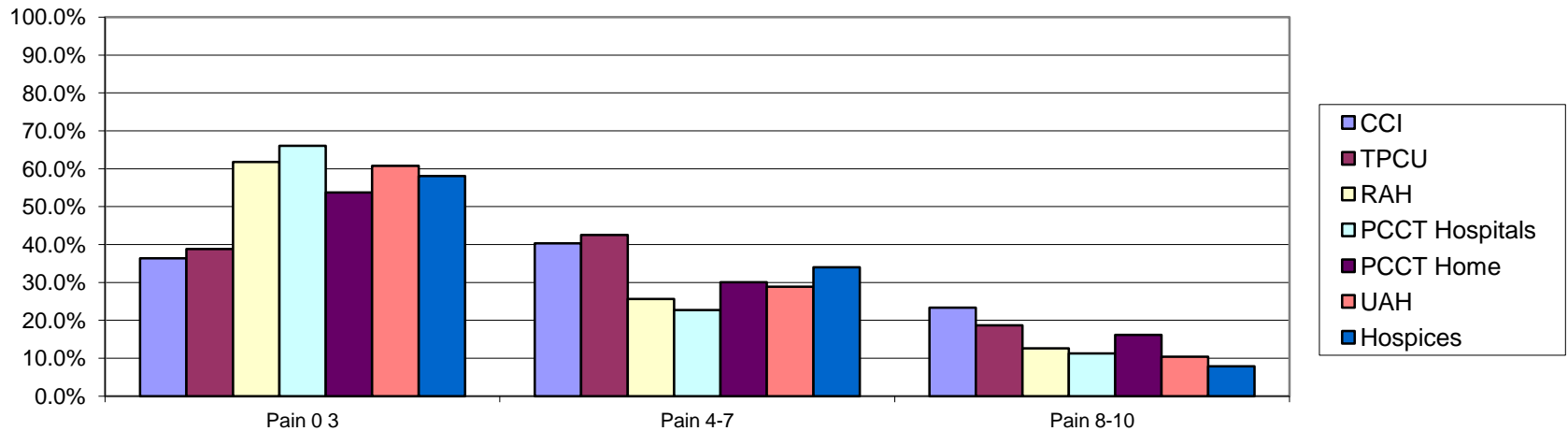
2011/2012 Last Average ESAS



2011/2012 First ESAS Pain Groupings

	Pain 0-3	Pain 4-7	Pain 8-10
CCI	36.4%	40.3%	23.4%
TPCU	38.8%	42.5%	18.7%
RAH	61.8%	25.6%	12.6%
PCCT Hospitals	66.03%	22.72%	11.25%
PCCT Home	53.8%	30.0%	16.2%
UAH	60.8%	28.9%	10.4%
Hospices	58.1%	34.0%	7.9%

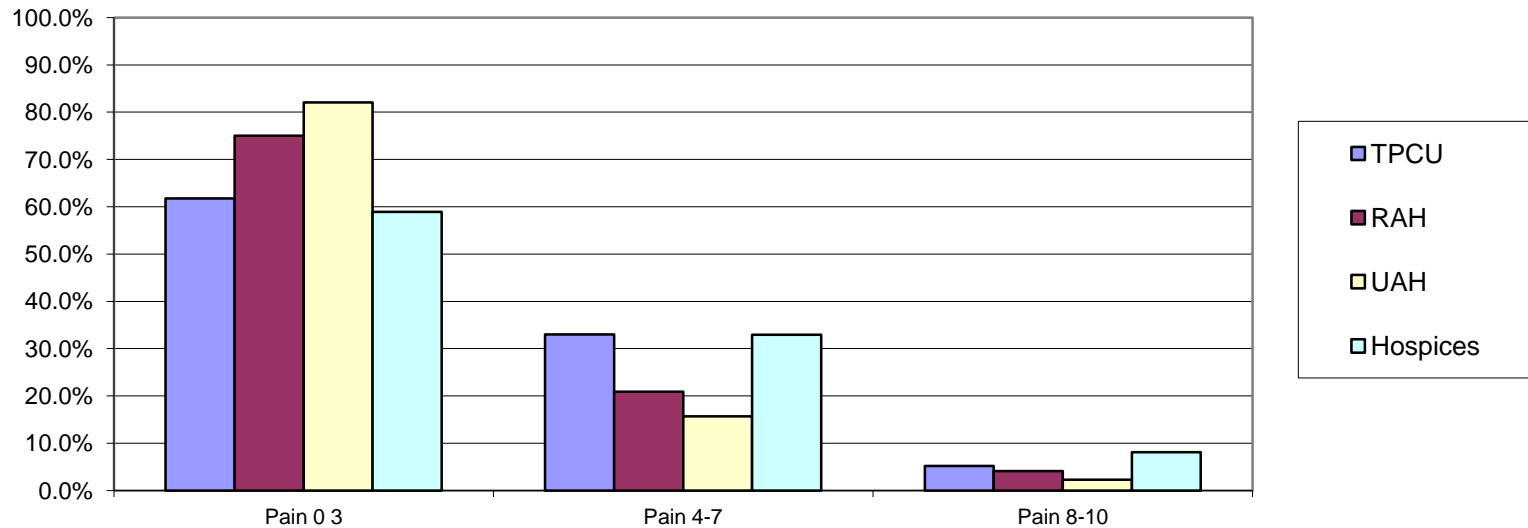
2011/2012 First ESAS Pain Groupings



2011/2012 Last ESAS Pain Groupings

	Pain 0-3	Pain 4-7	Pain 8-10
TPCU	61.8%	33.0%	5.2%
RAH	75.0%	20.9%	4.1%
UAH	82.0%	15.7%	2.3%
Hospices	58.9%	33.0%	8.1%

2011/2012 Last ESAS Pain Groupings



RPCP Services :

Consults/Discharges

	CCI	TPCU	RAH	UAH	PCCT Home	PCCT Hospitals	Hospice Referrals	Hospice Admissions
2009/2010	683	235	629	481	608	646	848	647
2010/2011	612	250	638	531	576	671	892	740
2011/2012	652	227	691	605	637	712	925	769

- Why is there not a demand for more TPCU admissions given growth in other areas?
- We are “losing” 150-200 hospice PCU admissions/yr – does this indicate a need for more beds?
- Do we have the resources to cope with the increasing referrals in acute care?